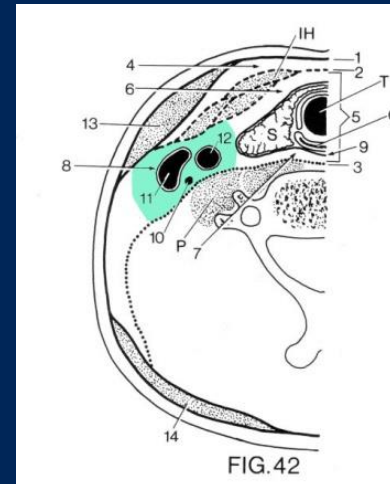


Halsmuskler og lag*



Muskelgrupper

- halsmuskler
- rygmuskler
- bugmuskler
- brystmuskler
- ekstremitetsmuskler
- hovedets muskler

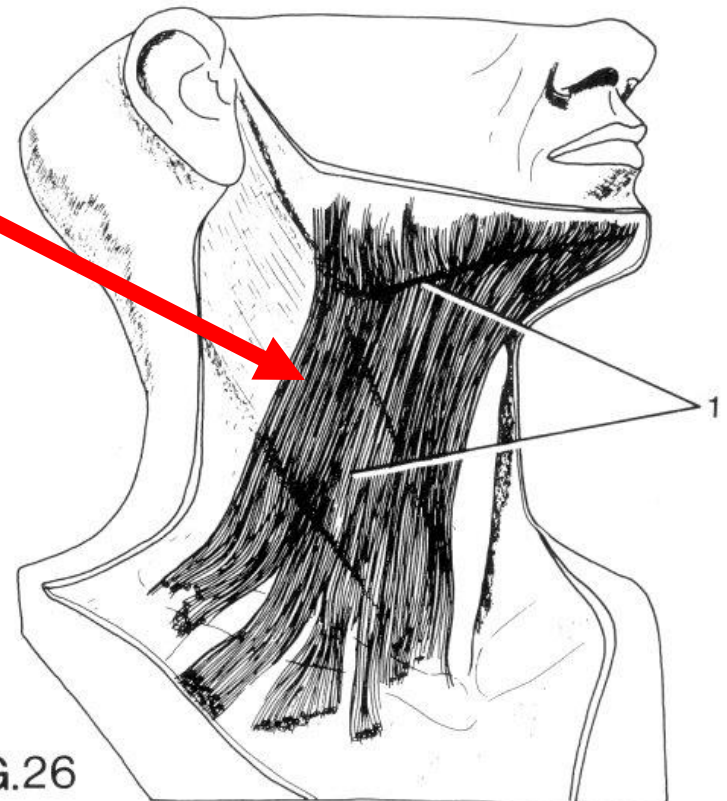
Halsens muskler

- Én tynd hudmuskel
- Skeletmuskler i tre lag

Halsens hudmuskel

- *platysma*
 - i underhuden
 - er bred og flad
 - bundet til brystkassen
 - bl a mandiblen

- innerveres af n. facialis



Halsens skeletmuskler i 3 lag

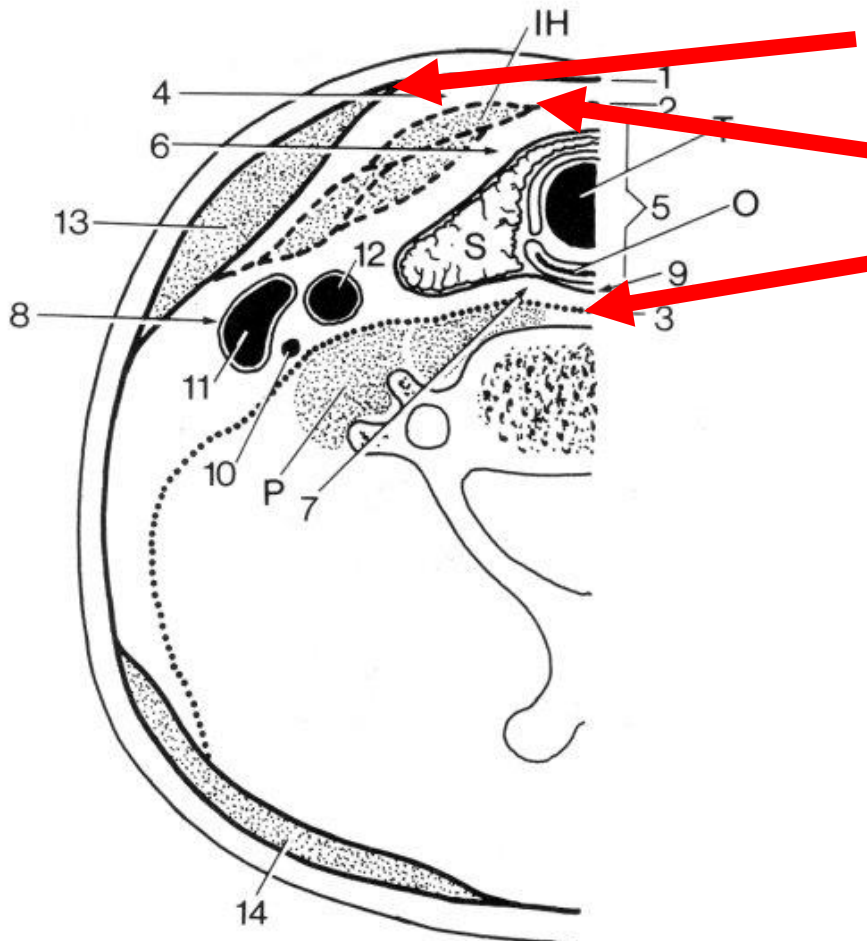


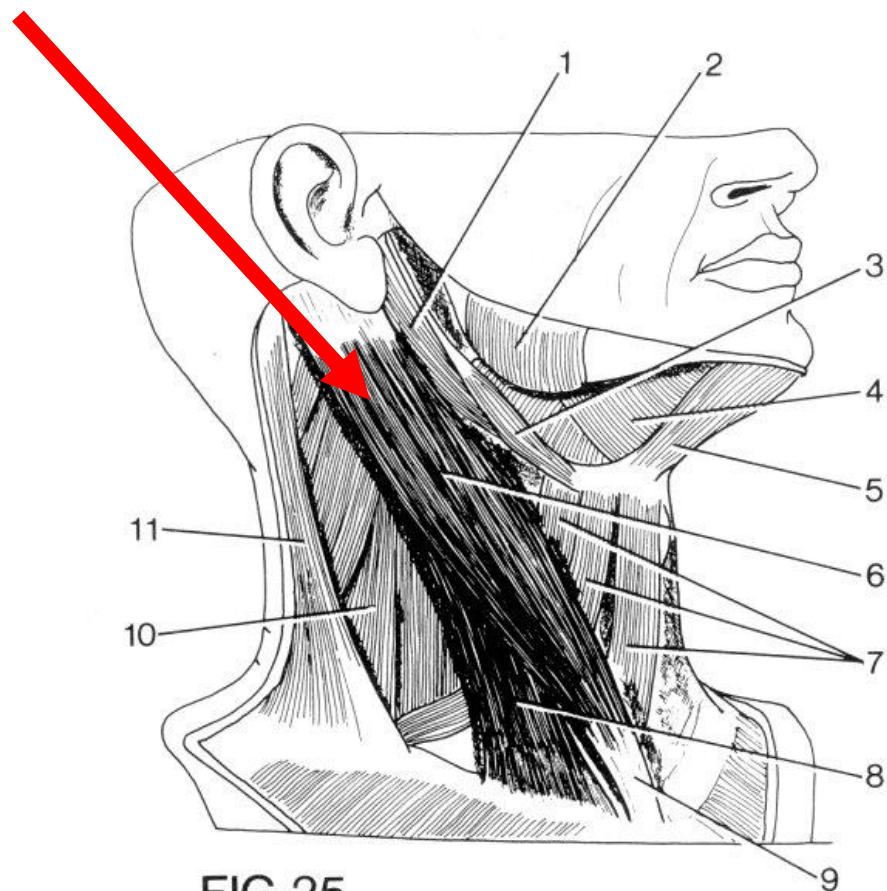
FIG.42

- de ligger i tre lag
 - m. sternocleidomastoideus
 - tungebensmuskler
 - prevertebralmuskler

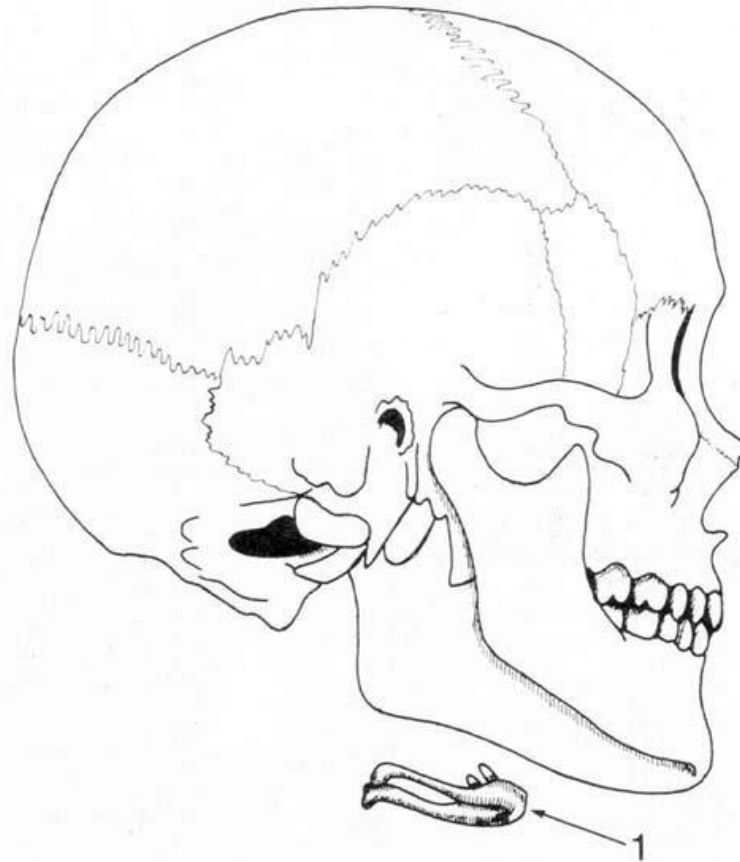
Halsens skeletmuskler

- *m. sternocleidomastoideus*
 - udspring
 - sternum og clavicula
 - tilhæftning
 - processus mastoideus

- innerveres af n. accessorius

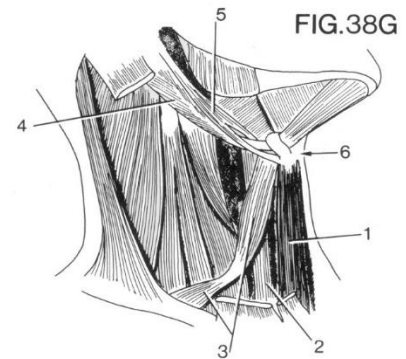


Tungebeben



Halsens muskler

- tungebensmuskler
 - suprahyoide muskler
 - infrahyoide muskler



Halsens skeletmuskler

- tungebensmuskler
 - suprahyoide muskler
 - infrahyoide muskler

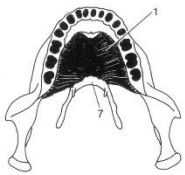


FIG. 27

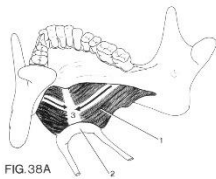


FIG. 38A

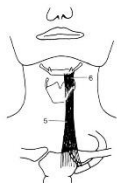


FIG. 33

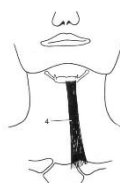


FIG. 32

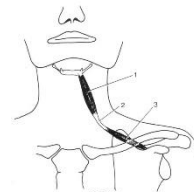


FIG. 31

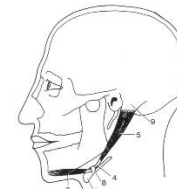


FIG. 29

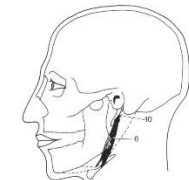


FIG. 30

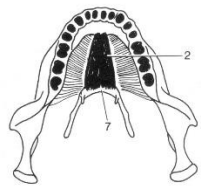


FIG. 28

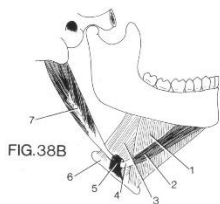


FIG. 38B



FIG. 38C

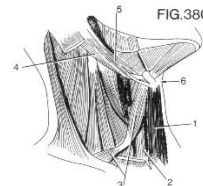


FIG. 38G

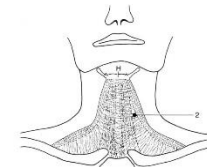
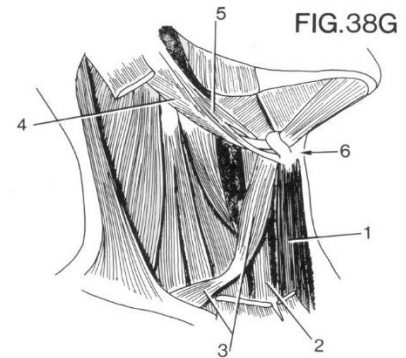


FIG. 40

Suprahyoide muskler

- *m. mylohyoideus*
- *m. geniohyoideus*
- *venter anterior m. digastrici*
- *venter posterior m. digastrici*
- *m. stylohyoideus*



Suprahyoide muskler..

- *m. mylohyoideus*
 - mundbundens muskel
 - udspring:
 - corpus mandibulae
 - tilhæftning:
 - os hyoideum (plus raphe i midten)

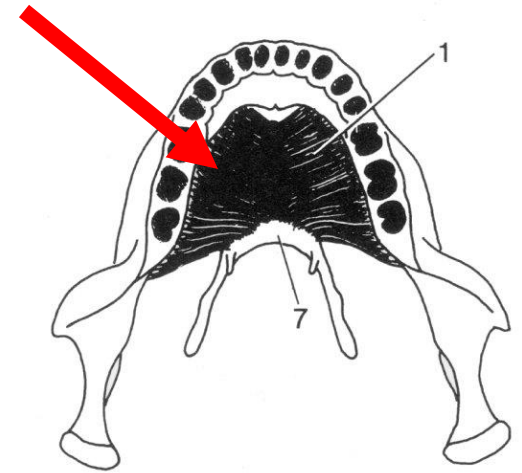
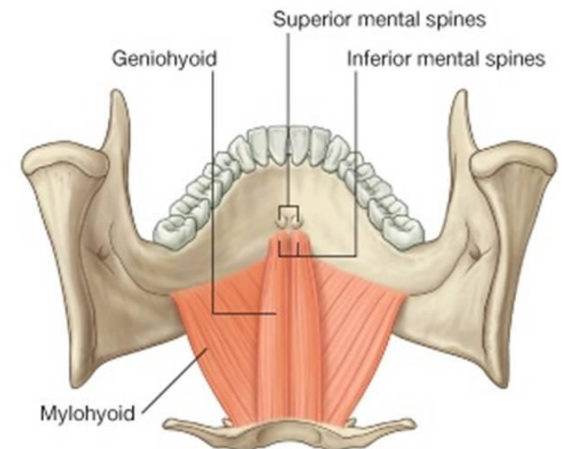
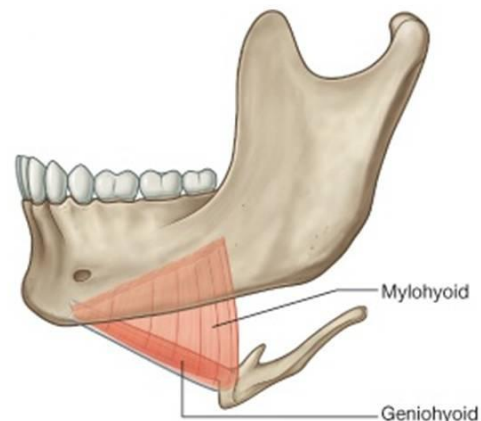


FIG. 27

- n. mandibularis



..Suprahyoide muskler..

- *m. geniohyoideus*

- udspring:

- corpus mandibulae

- tilhæftning:

- os hyoideum

- Innervation af plexus cervicalis

m. geniohyoideus

[Aa2-87](#) (16-6)

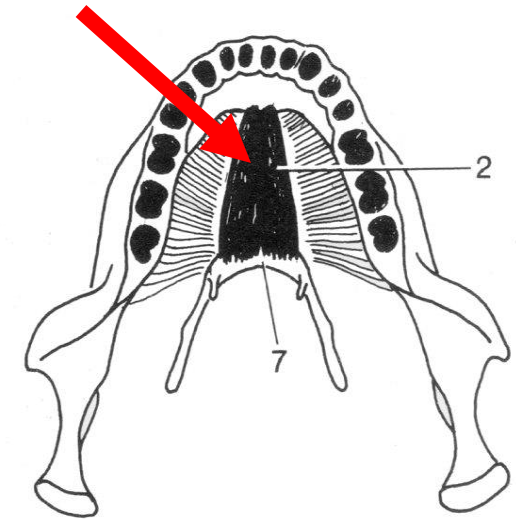
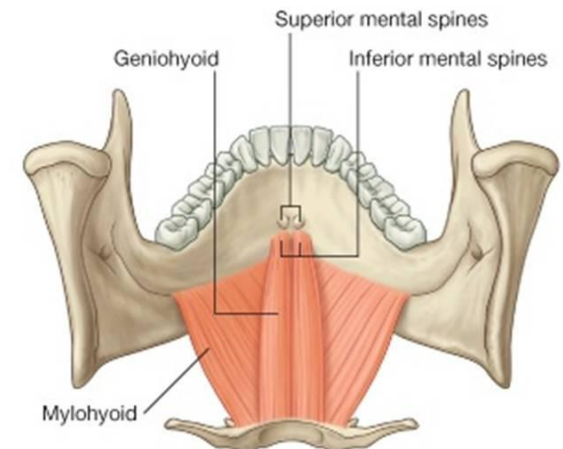
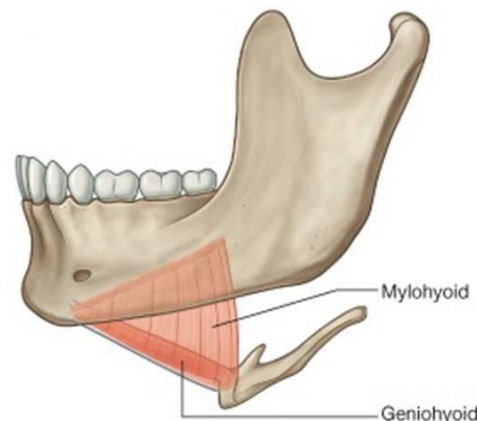


FIG. 28



..Suprahyoide muskler..

- *venter anterior m. digastrici*
 - udspring:
 - basis mandibula
 - tilhæftning:
 - os hyoideum

- n. mandibularis

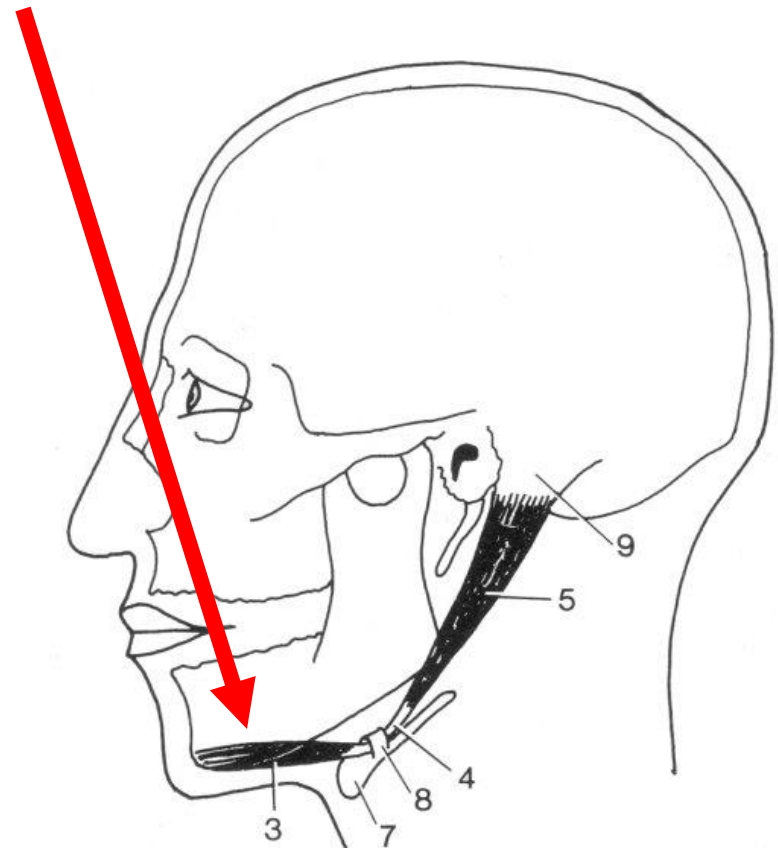


FIG. 29

..Suprahyoide muskler..

- venter posterior *m. digastricus*
 - udspring:
 - basis cranii
 - tilhæftning:
 - os hyoideum
 - n. facialis

De to buger mødes i en mellemsene (4).
Ved hjælp af en bindevævsslynge (8) fra den yderste halsfascie er senen bundet fast til os hyoideum (7) og den kan ikke forskydes i slyngen..

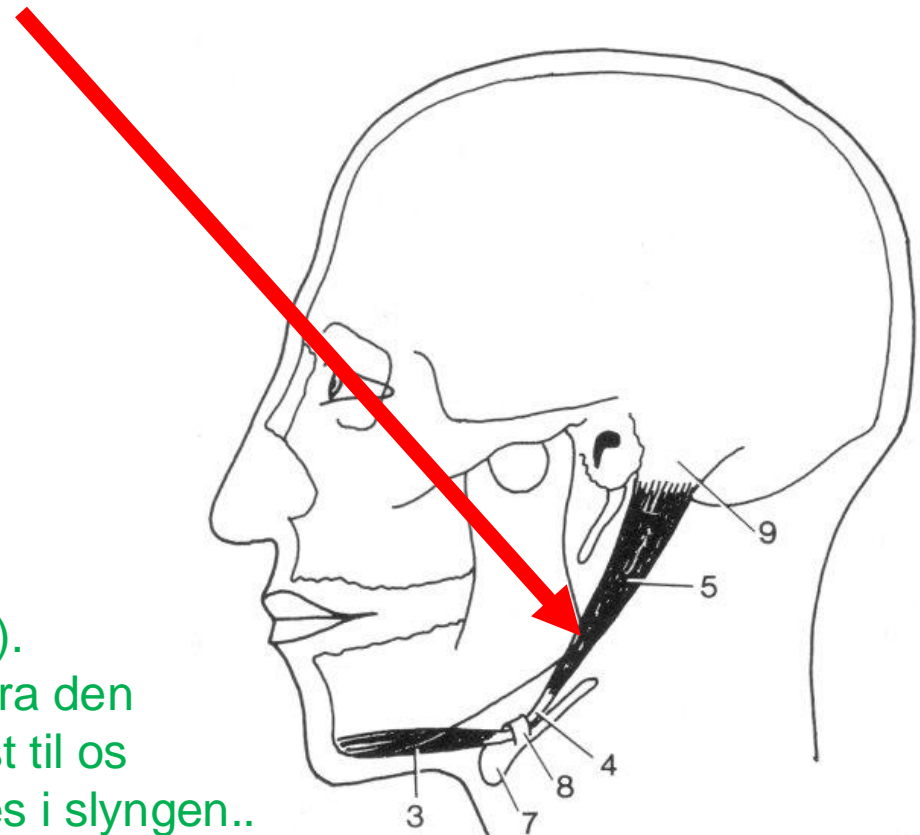


FIG. 29

..Suprahyoide muskler

- *m. stylohyoideus*
 - udspring
 - processus stylohyoideus
 - tilhæftning
 - os hyoideum
 - n. facialis

Den løber sammen med venter posterior m. digastrici til os hyoideum. Her hæfter den sig, idet musklen spalter sig og griber omkring mellemsenen af m. digastricus.

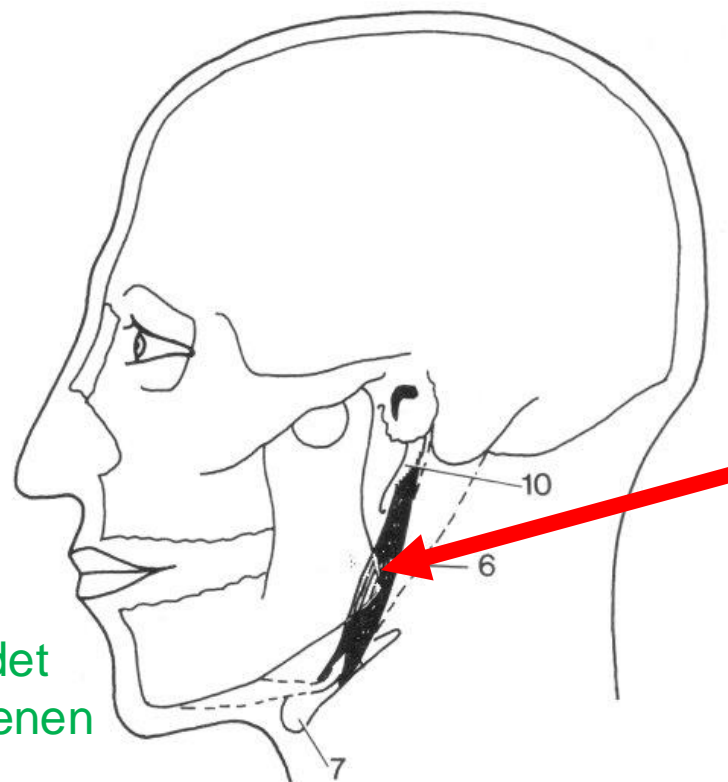


FIG. 30

Infrahyoide muskler ..

Infrahyoide muskler ..

- *m. omohyoideus venter superior*
- *m. omohyoideus venter inferior*
- *m. sternohyoideus*
- *m. sternothyroideus*
- *m. thyreohyoideus*

Infracryoide muskler ..

- *m. omohyoideus venter superior*
 - udspring:
 - os hyoideum
 - tilhæftning:
 - mellemsene

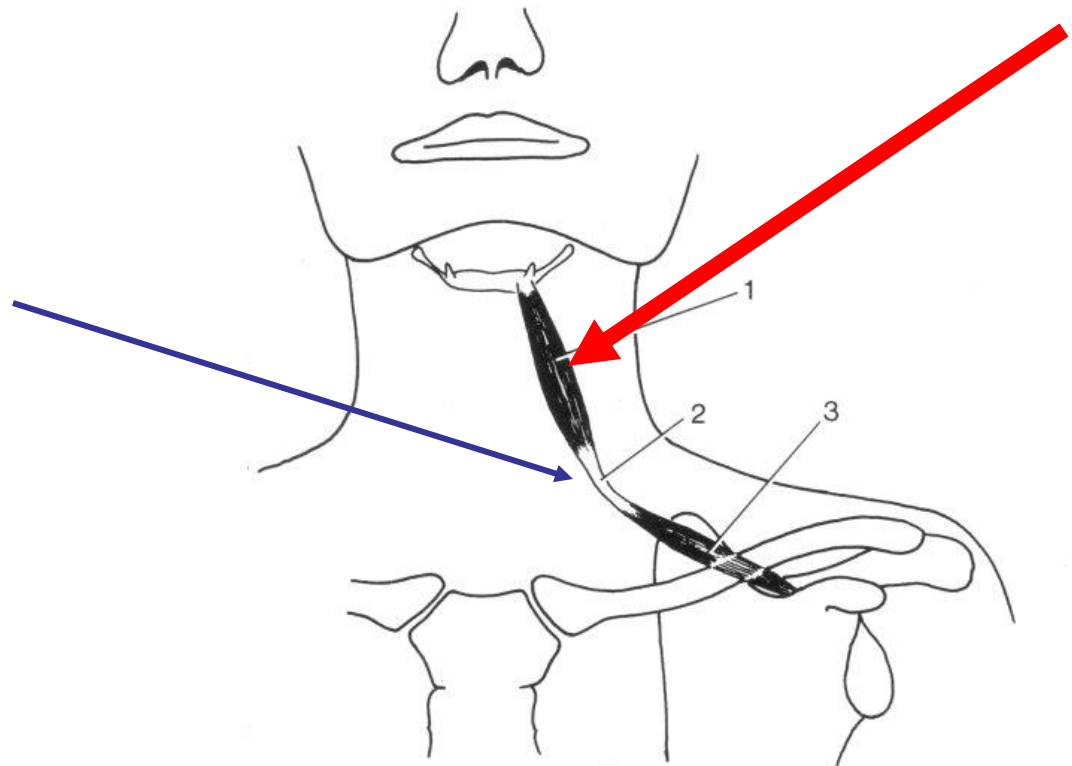


FIG. 31

Infracryoide muskler ..

- *m. omohyoideus venter inferior*
 - udspring:
 - scapula
 - tilhæftning:
 - mellemsene

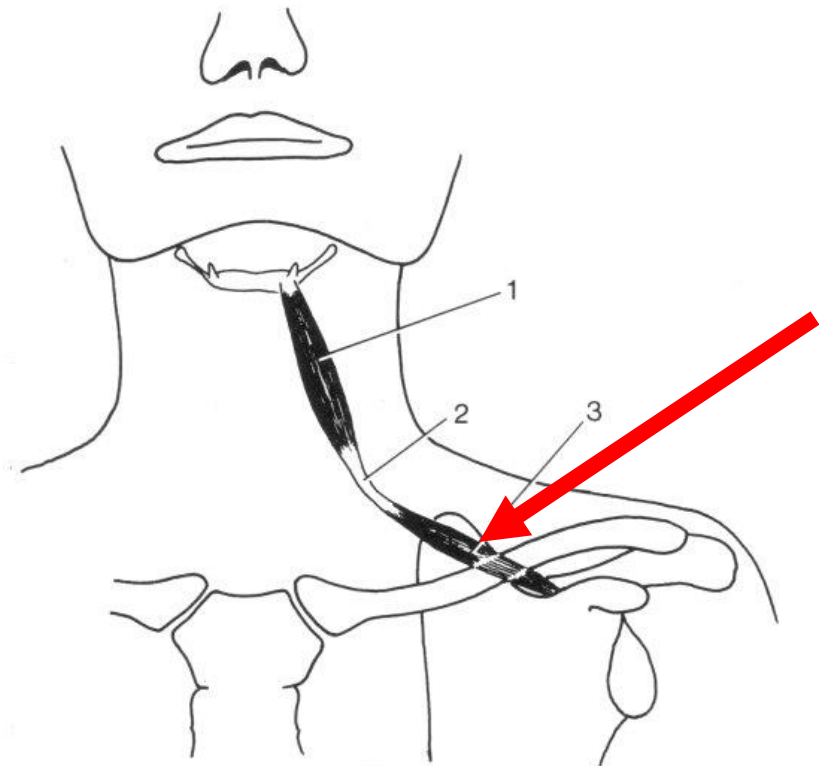
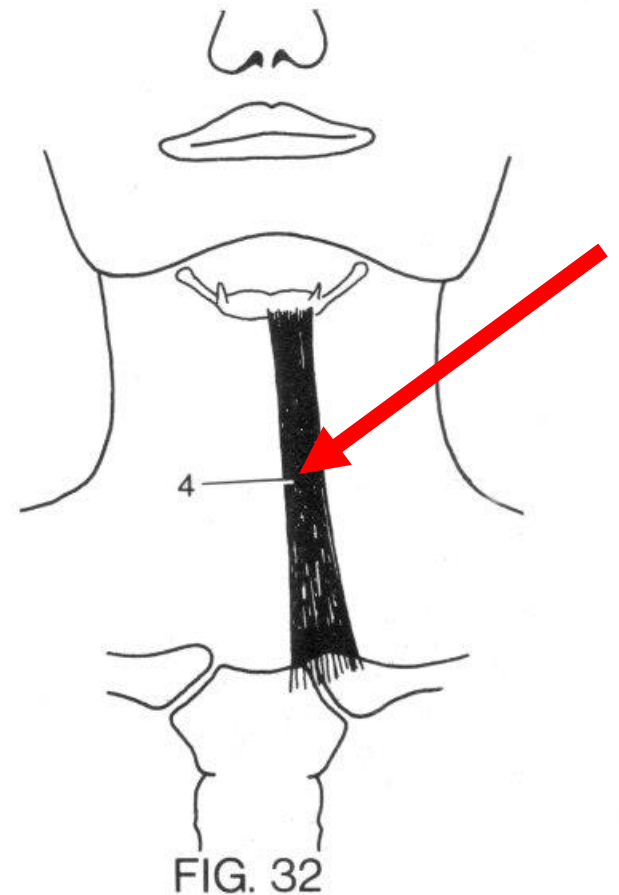


FIG. 31

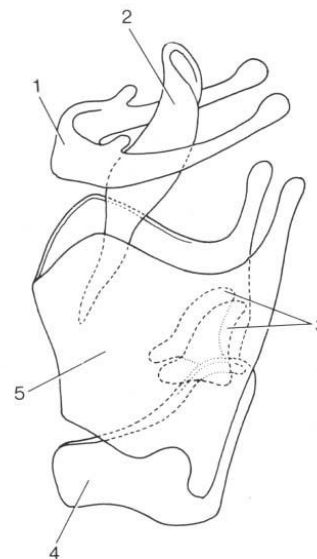
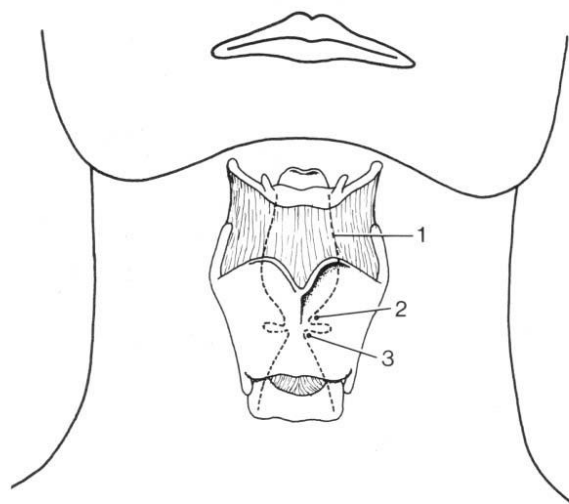
De to buger mødes i en mellemsene (2) midt på halsen.

Infrahyoide muskler ..

- *m. sternohyoideus*
 - udspring:
 - manubrium sterni (bagsiden)
 - tilhæftning:
 - os hyoideum

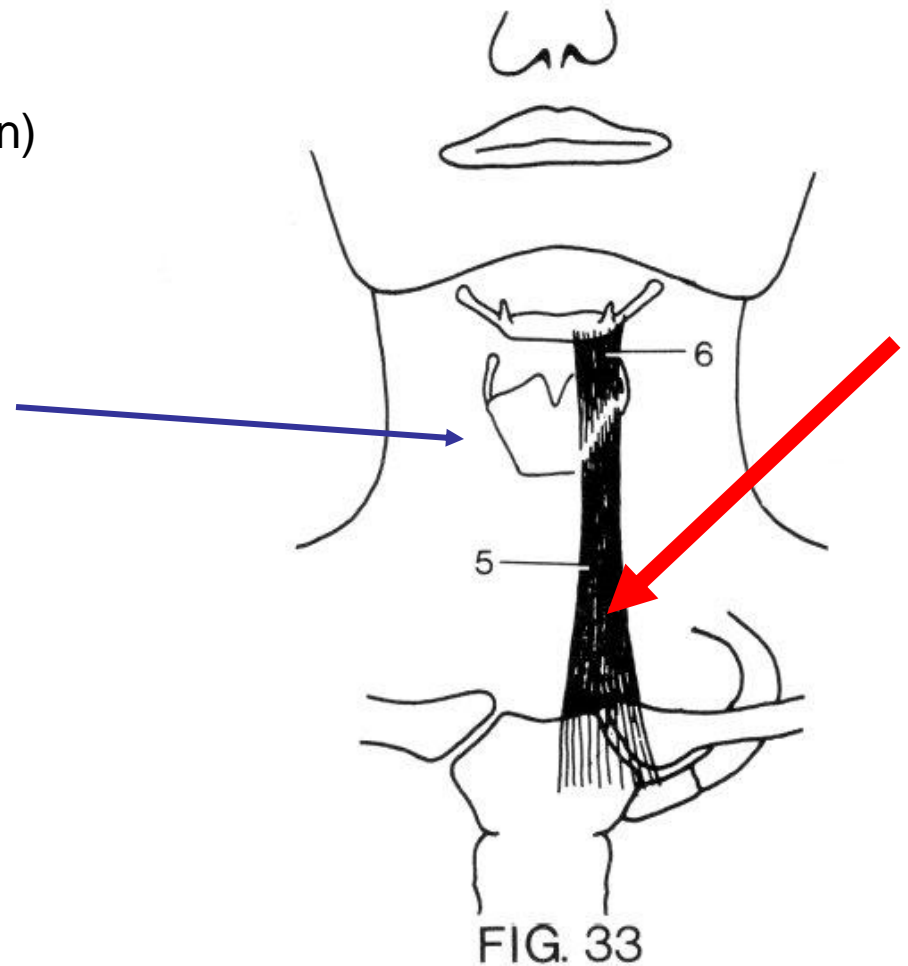


Tungebenen, skjoldbrusk og ringbrusk*



Infrahyoide muskler

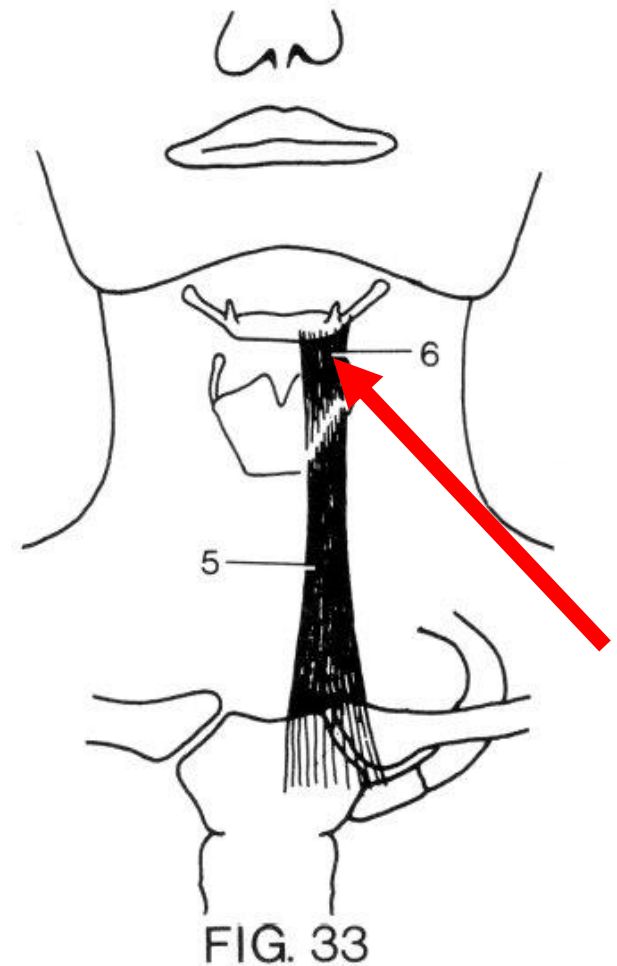
- *m. sternothyroideus*
 - udspring:
 - manubrium sterni (bagsiden)
 - tilhæftning:
 - cartilago thyroidea



Infrahyoide muskler (nedre)

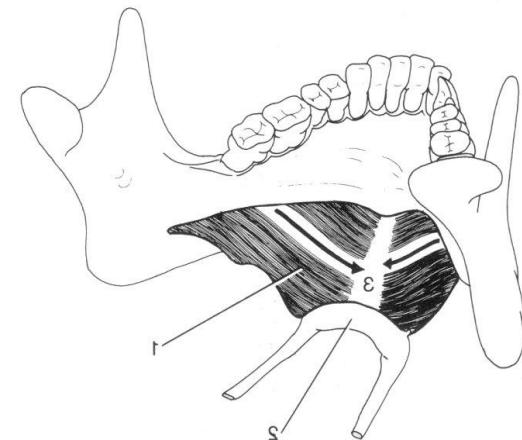
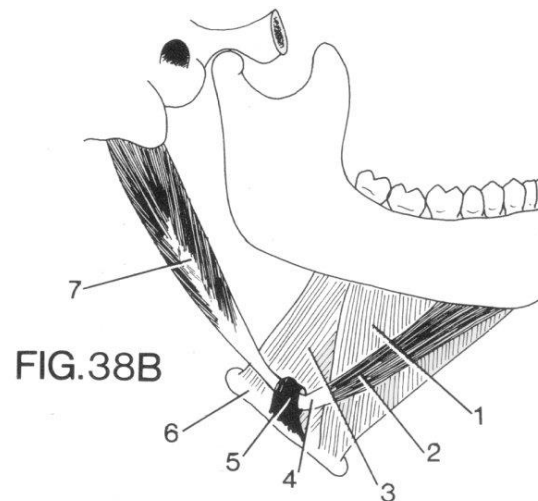
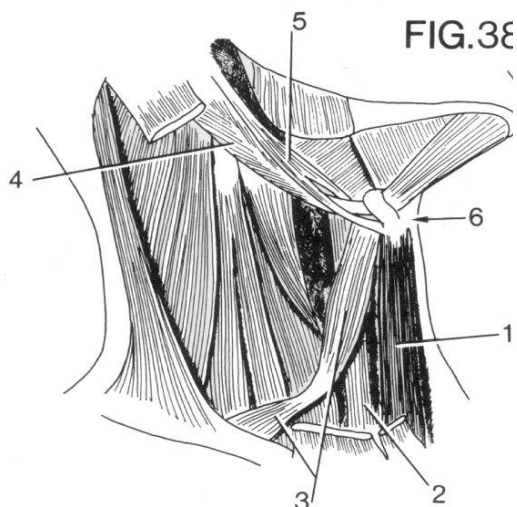
- *m. thyrohyoideus*
 - udspring:
 - cartilago thyroidea
 - tilhæftning:
 - os hyoideum

Plexus cervicalis innerverer alle infrahyoide muskler.



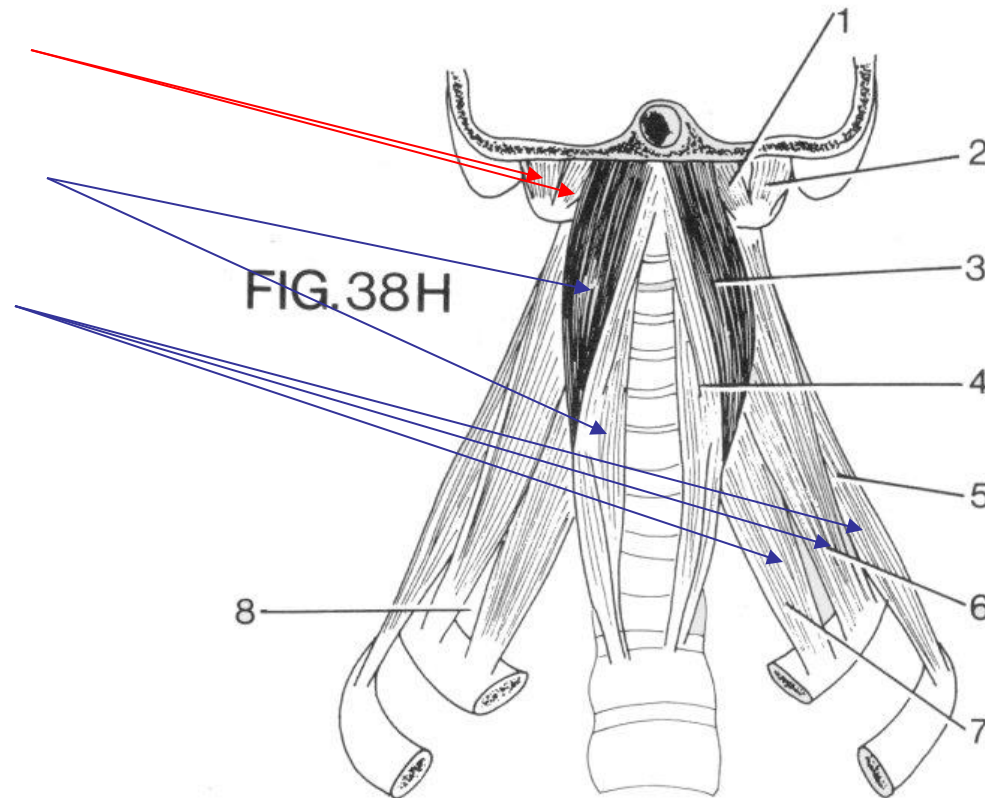
Punctum fixum ?

Når de infrahyoide muskler trækker nedad i os hyoideum, og de bageste suprahyoide muskler samtidig trækker opad, vil de resterende forreste suprahyoide muskler bruge det fikserede os hyoideum som punctum fixum og dermed trække mandibula nedad.



Prævertebralmuskler her oversigt

- to korte
- to lange
- tre skrå



skimmes

Korte Prævertebralmuskler

forbinder atlas med kraniet

- m. rectus capitis anterior
- m. rectus capitis lateralis

Korte Prævertebralmuskler

- m. rectus capitis anterior
 - udspring:
 - basis cranii
 - tilhæftning:
 - atlas

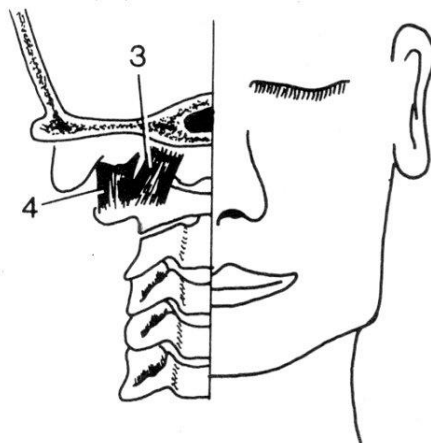
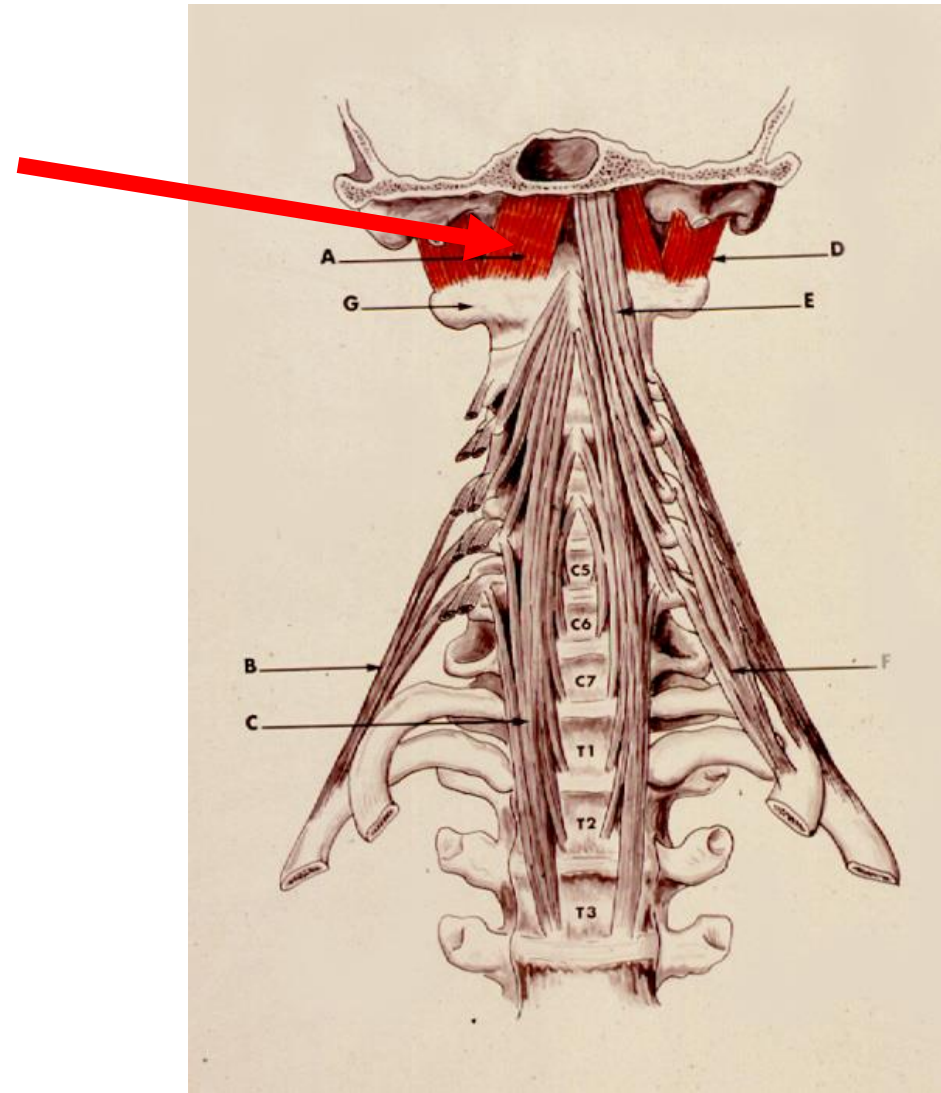


FIG. 36



Korte Prævertebralmuskler

- m. rectus capitis lateralis
 - udspring:
 - basis cranii
 - tilhæftning:
 - tværtap på atlas

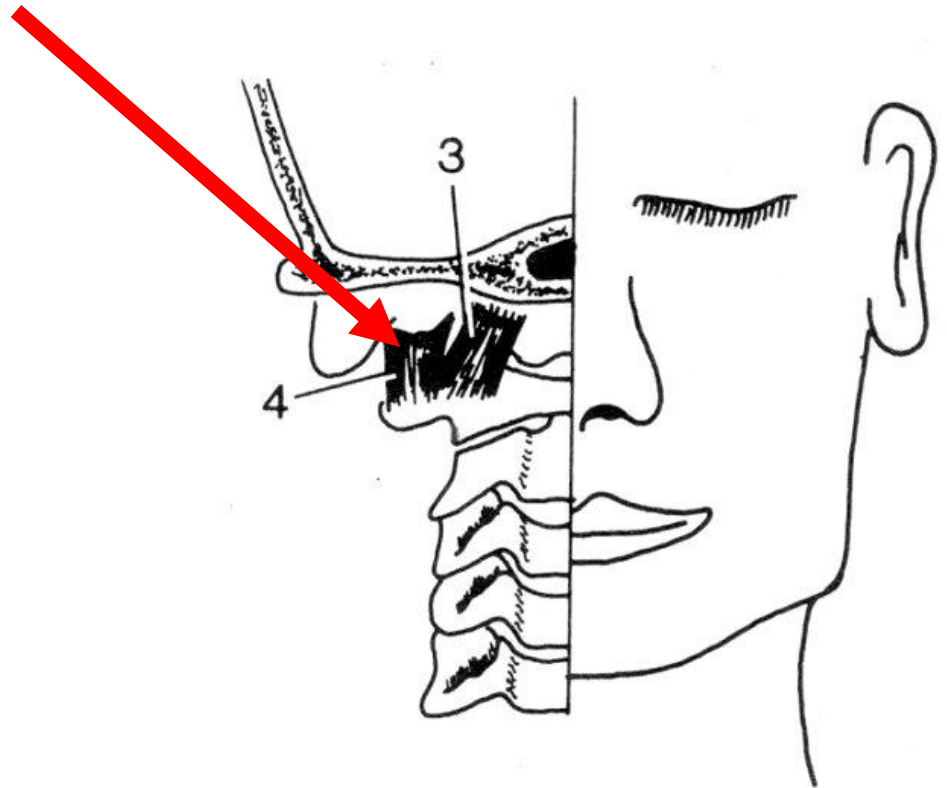


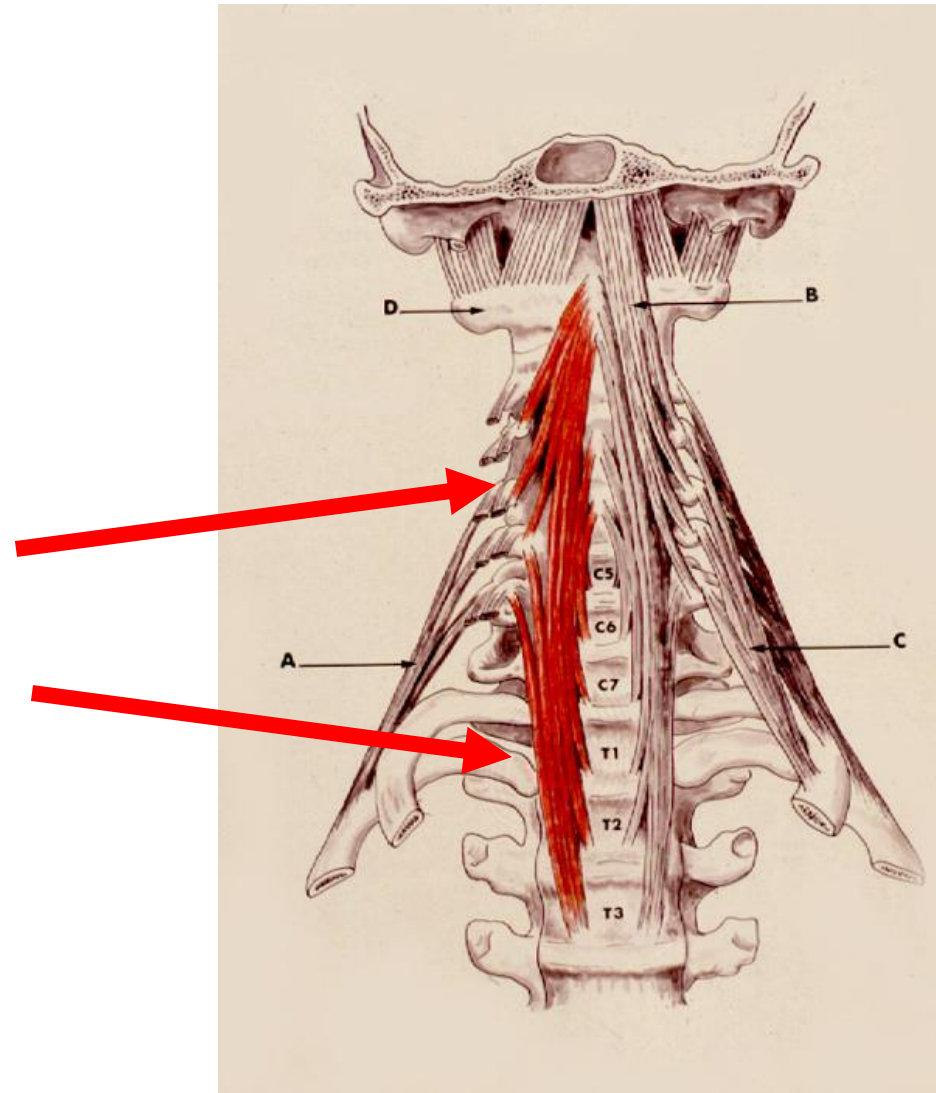
FIG. 36

Lange Prævertebralmuskler

- den lange halsmuskel
- den lange hovedmuskel

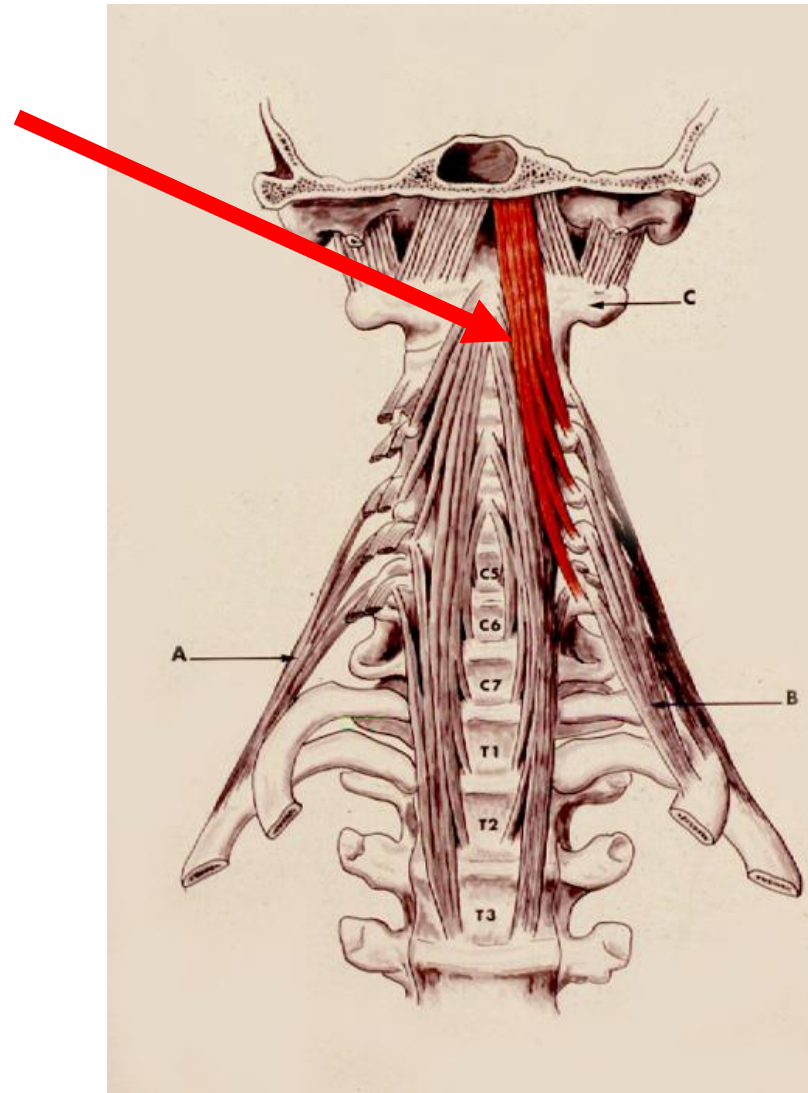
Lange Prævertebralmuskler

- *m. longus colli*
- den lange halsmuskel
 - forbinder hvirvler



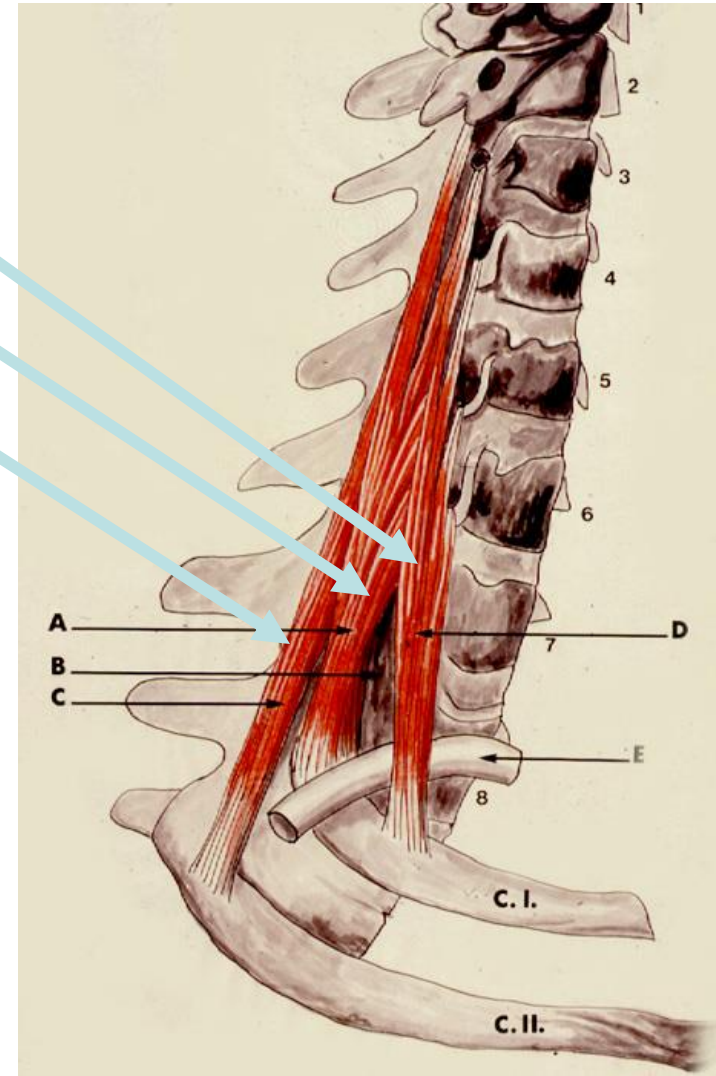
Lange Prævertebralmuskler

- *m. longus capitis*
- den lange hovedmuskel
 - udspring:
 - fra nederste halshvirvlers tværtappe
 - tilhæftning:
 - basis cranii
 - foran foramen magnum



Skrå Prævertebralmuskler*

- m. scalenus anterior
- m. scalenus medius
- m. scalenus posterior
 - udspring
 - halshvirvlers tværtappe
 - tilhæftning
 - 1./2. Ribben
 - innervation:
 - plexus cervicalis
 - plexus brachialis

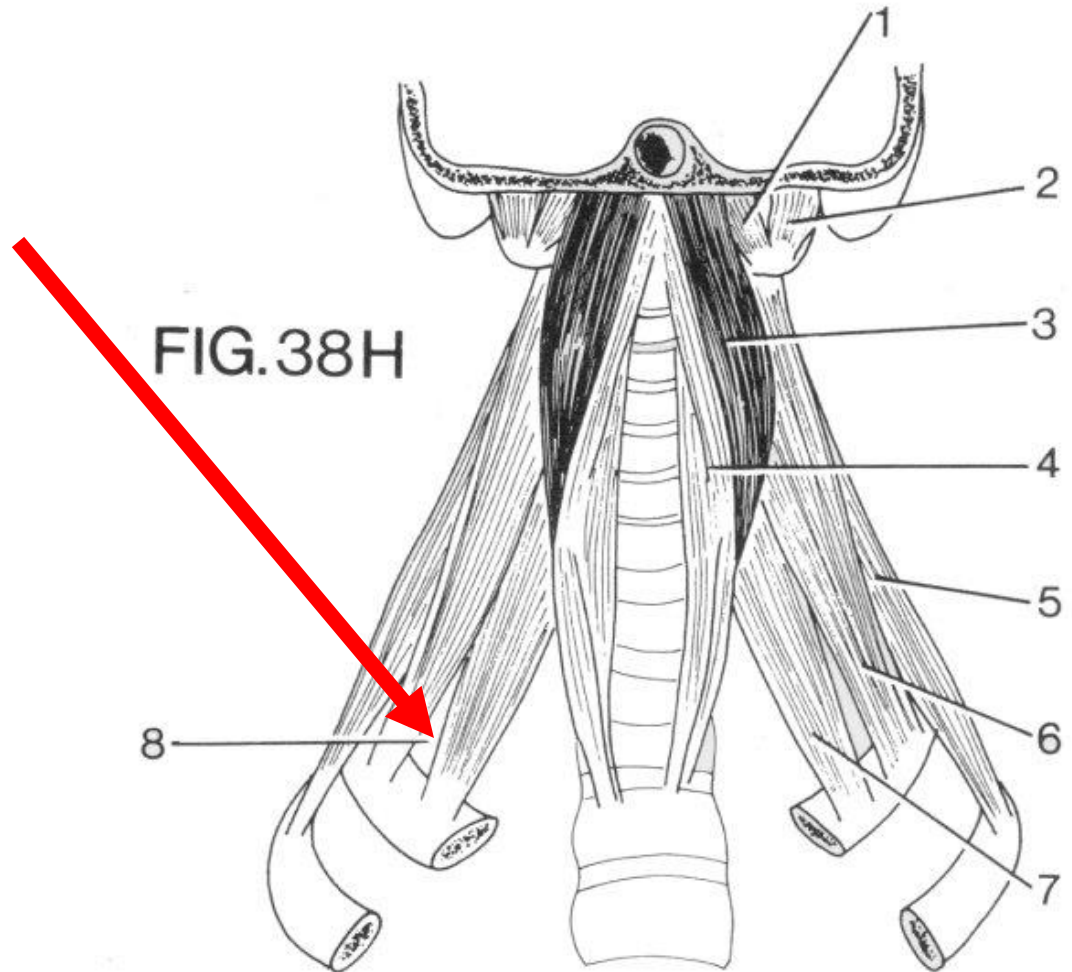


”Scalenerporten” *

forbinder:

brysthule og hals

brysthule og extremitet



HALSENS FASCIER

Lamina superficialis

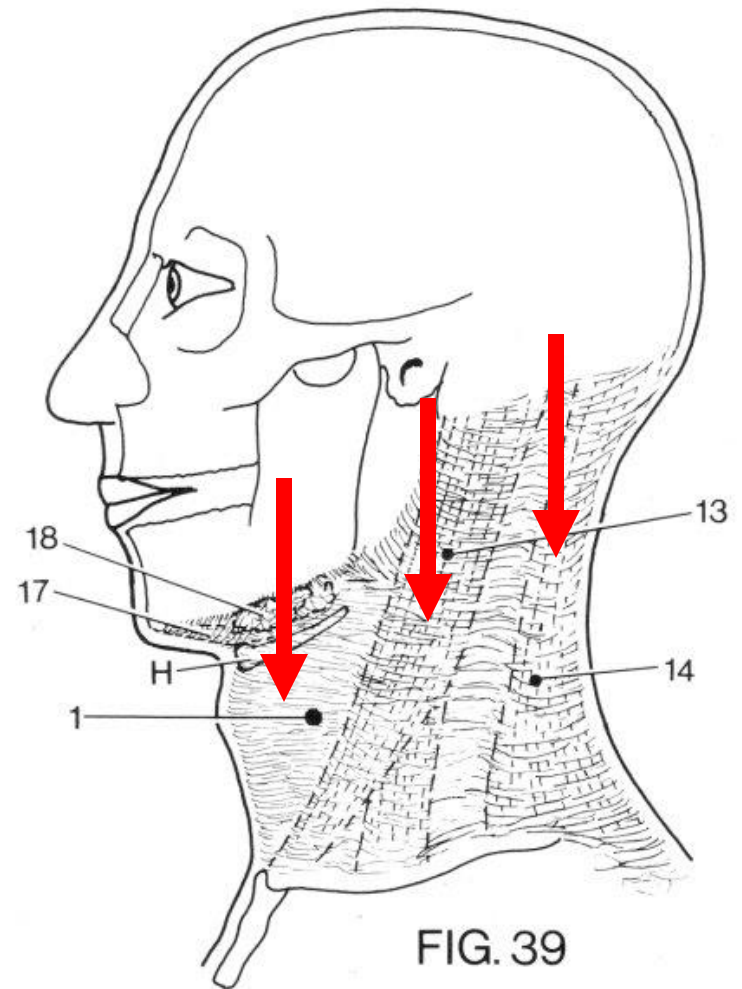


FIG. 39

Halsens fascier

- lamina superficialis

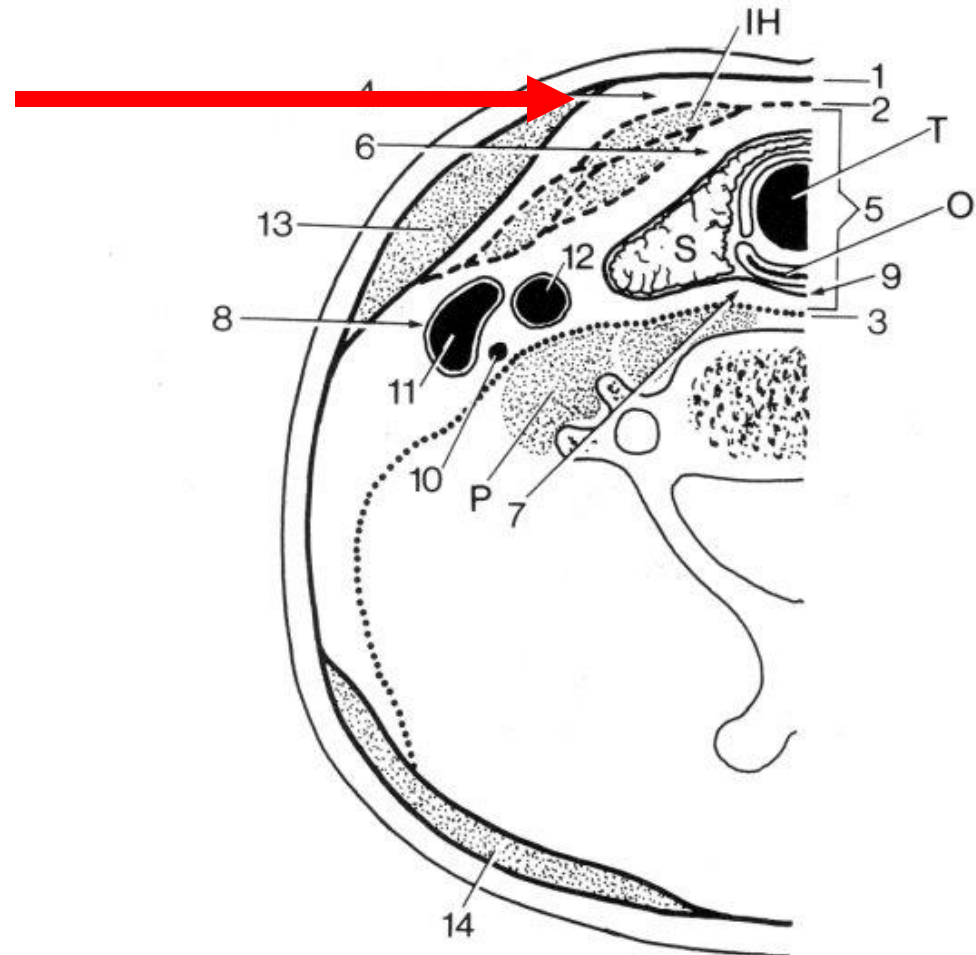


FIG.42

Halsens fascier

- lamina superficialis
- lamina pretrachealis
- lamina prevertebralis

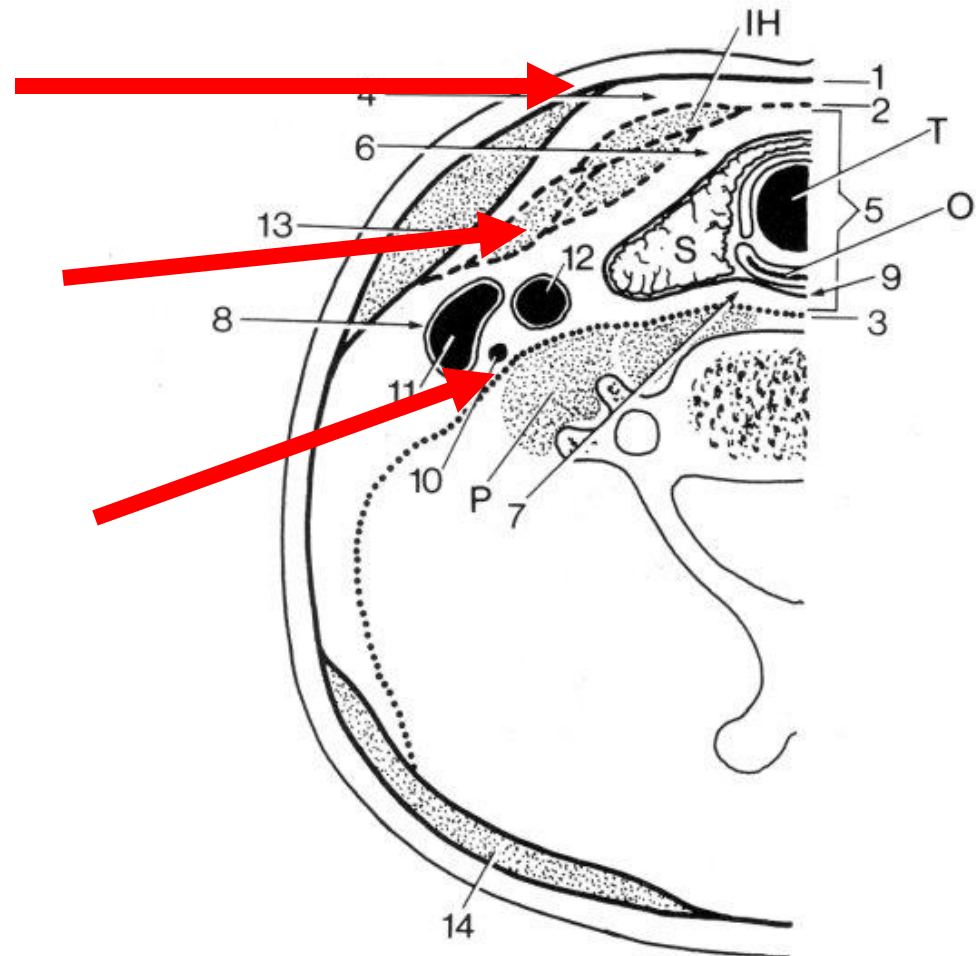
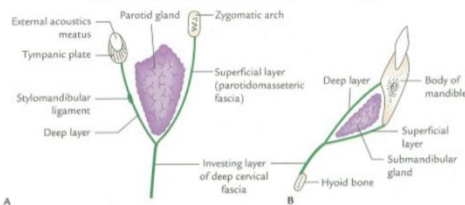
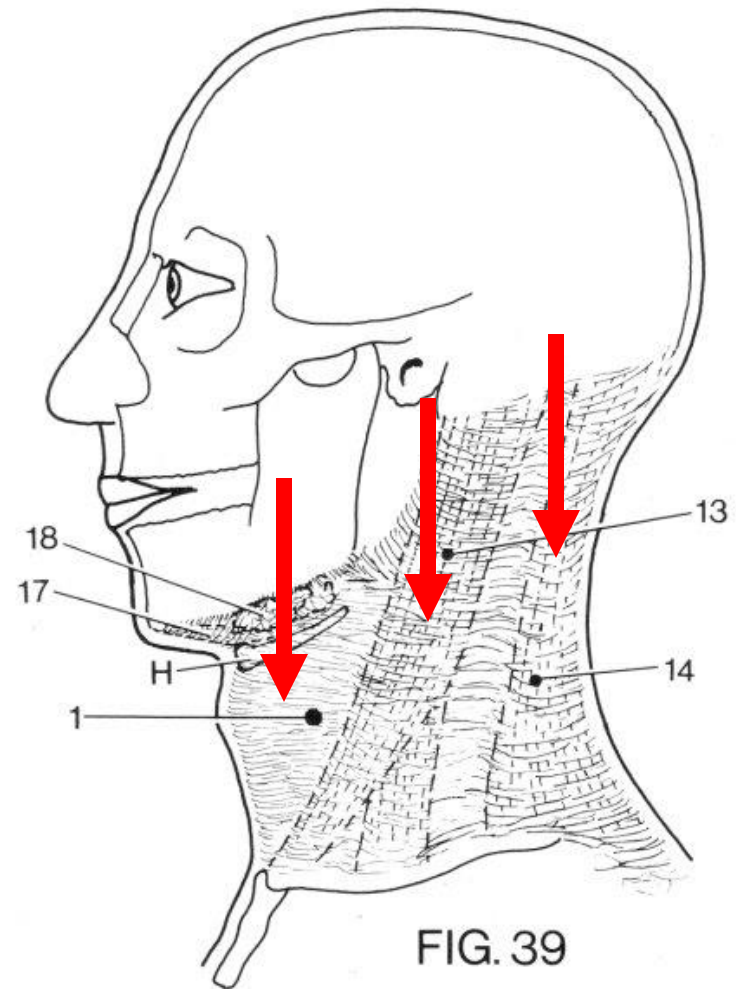


FIG. 42

HALSENS FASCIER

Lamina superficialis

- fra:
 - sternum og clavicula
 - rygfascien
- til:
 - basis mandibulae
 - linea nuchalis superior
- omskeder:
 - m. sternocleidomastoideus
 - m. trapezius
 - venter anterior m. digastrici
 - gld. submandibularis

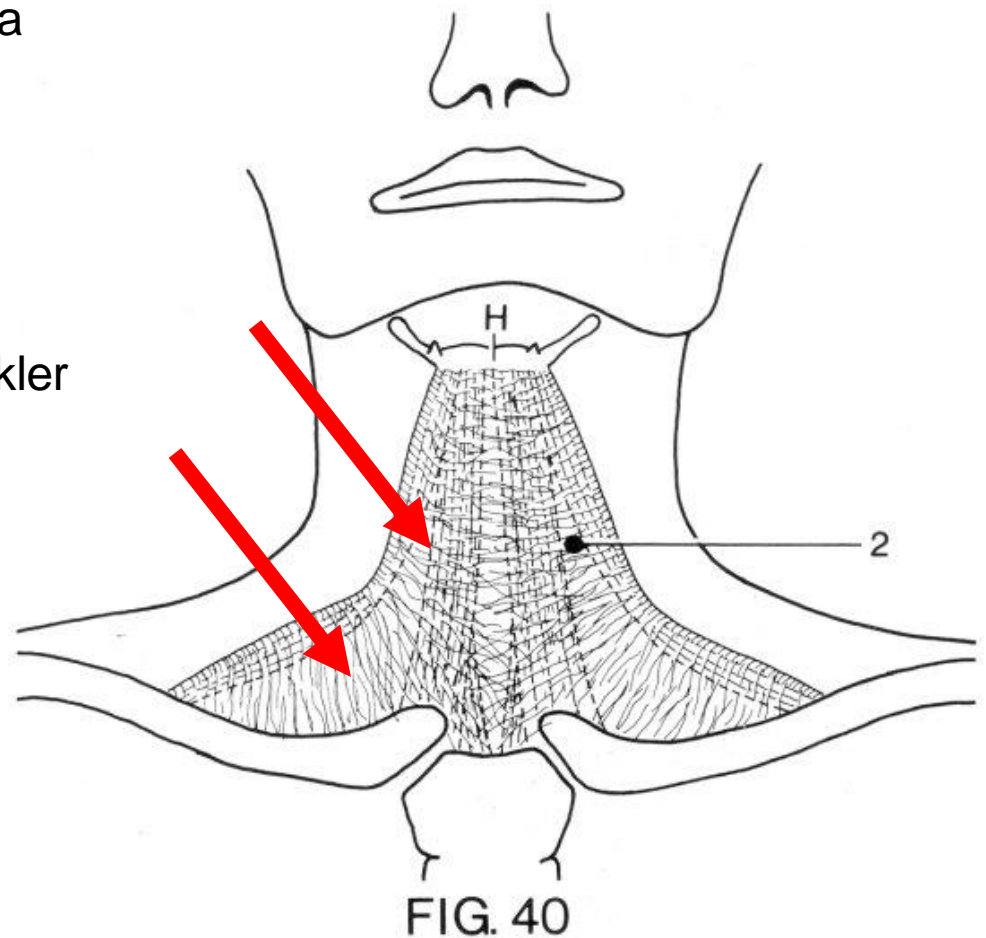


Investing layer of deep cervical fascia enclosing two glands: A, parotid gland; B, submandibular gland.

HALSENS FASCIER

Lamina pretrachealis

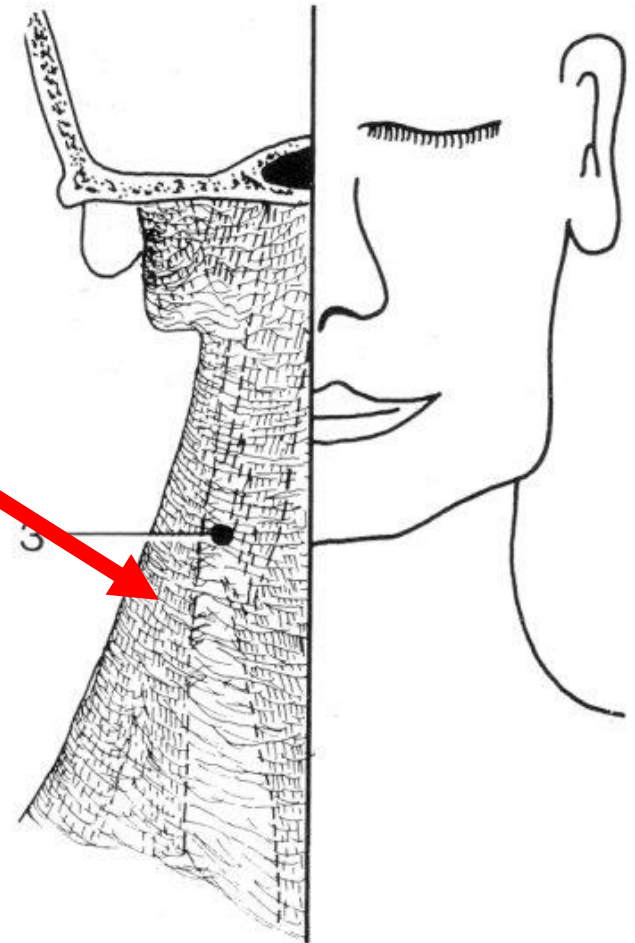
- fra:
 - sternum og clavicula
- til:
 - os hyoideum
- omskeder:
 - de infrahyoide muskler



HALSENS FASCIER

Lamina prevertebralis

- udenom:
 - prevertebralmusklerne
- fra:
 - basis cranii
- til:
 - øverste brystvirvler



Halsfaszier

Lamina superficialis

Lamina pretrachealis

Lamina prevertebralis

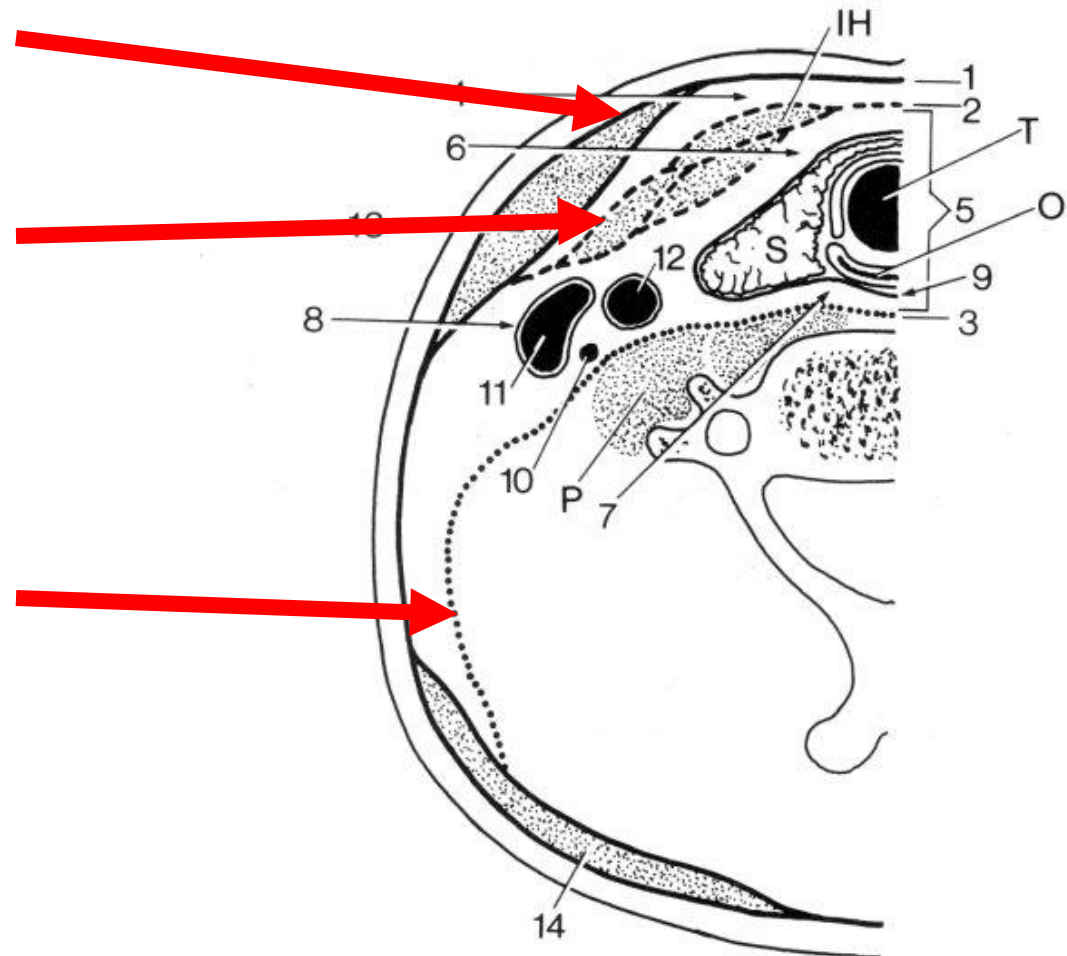


FIG.42

Rum mellem halsfascier

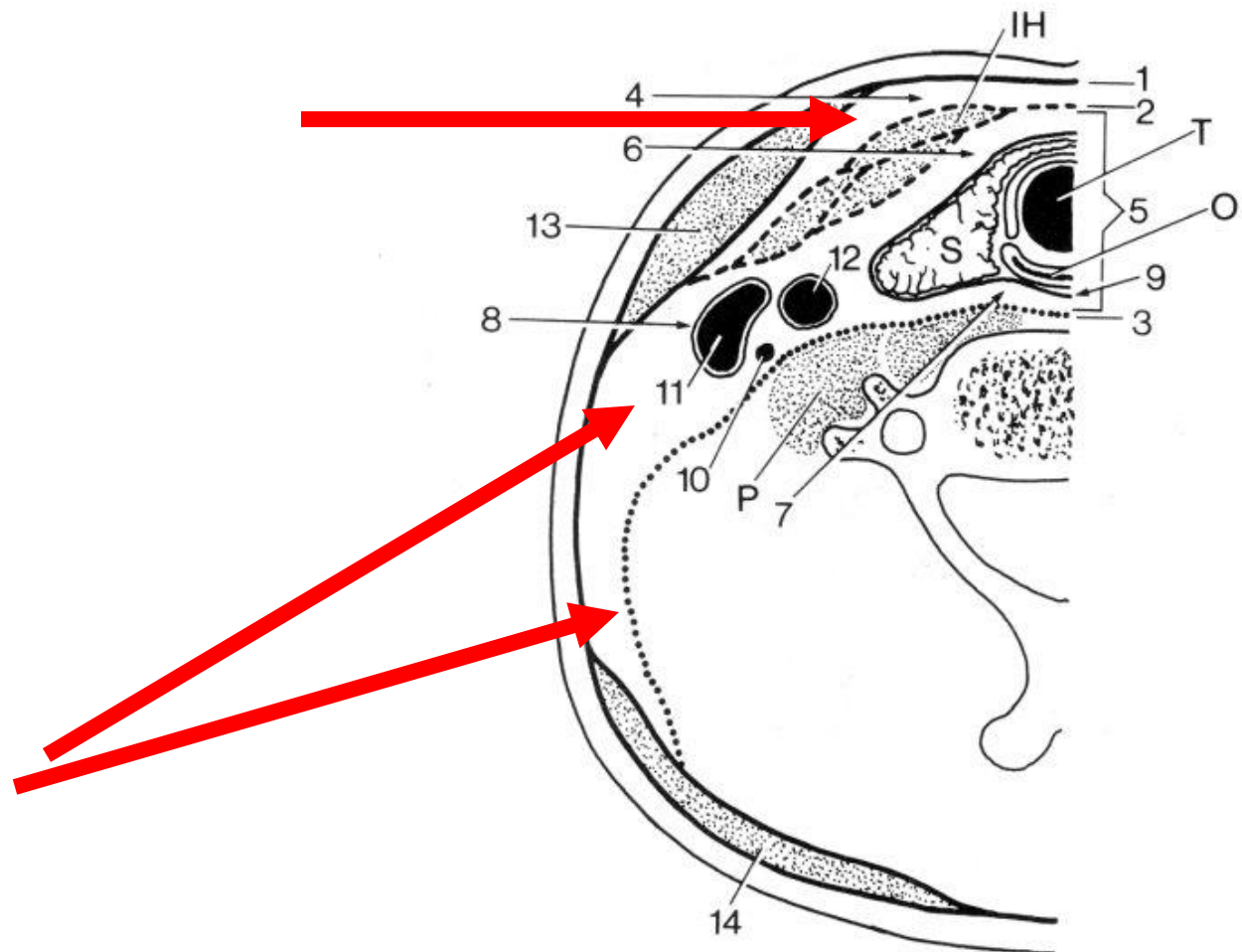


FIG.42

Bindevævsrum

- Spatium interfasciale
 - mellem:
 - lamina superficialis
 - lamina pretrachealis
 - indhold:
 - løst bindevæv

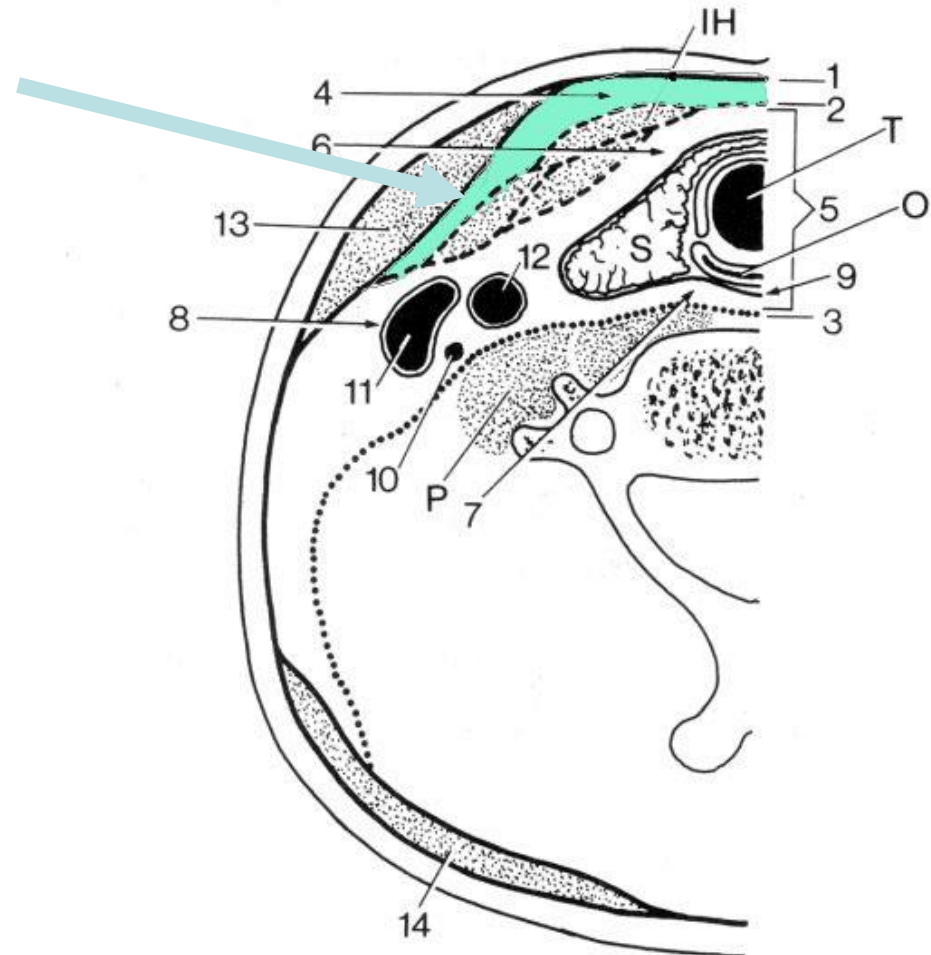


FIG.42

Bindevævsrum

- **Spatium viscerale**
 - begrænsninger
 - lamina pretrachealis
 - lamina superficialis
 - lamina prevertebralis
 - indhold:
 - » spiserør og luftrør
 - » skjoldbruskkirtel
 - » Bindevæv, spatium peripharyngeum

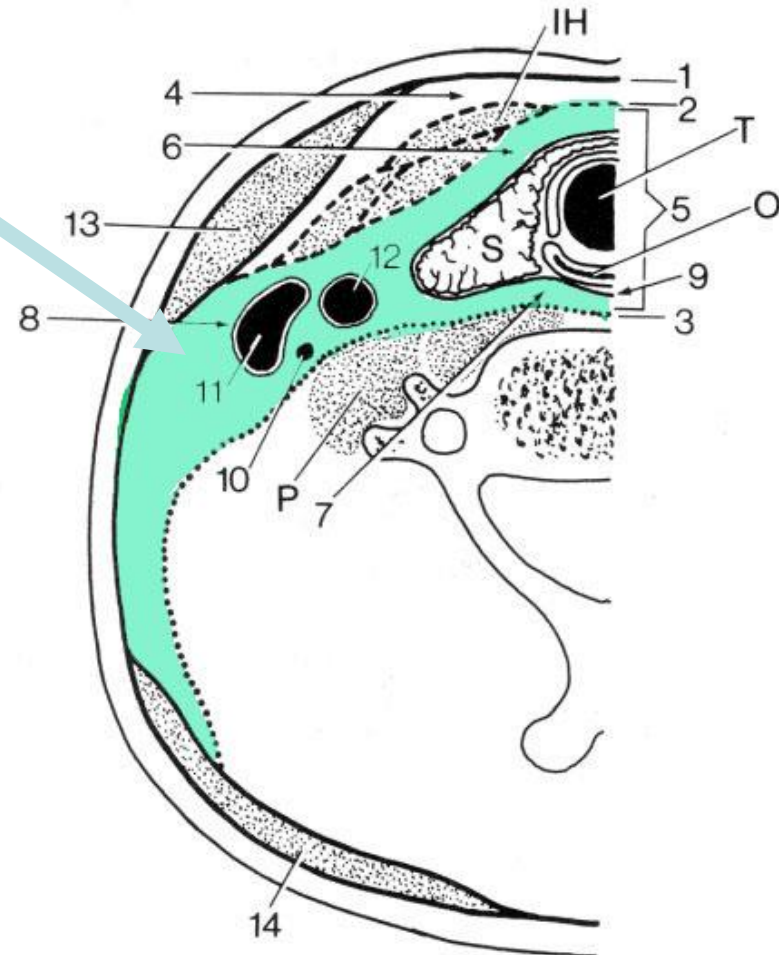
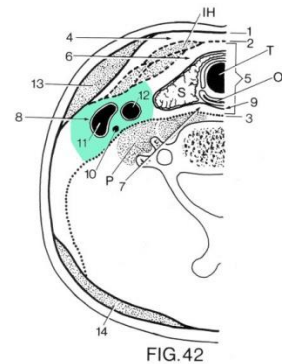
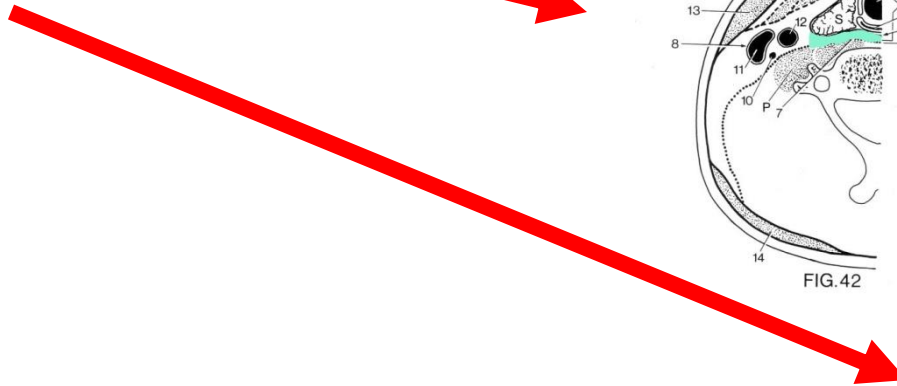
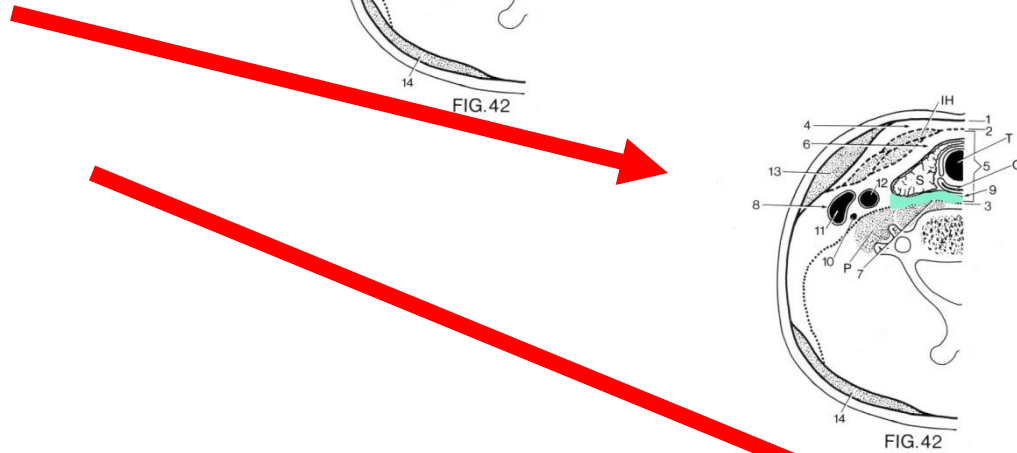
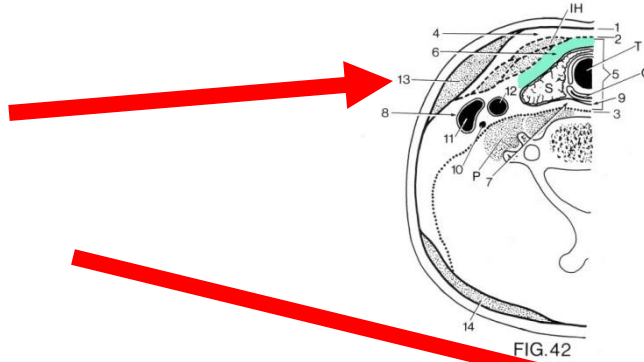


FIG.42

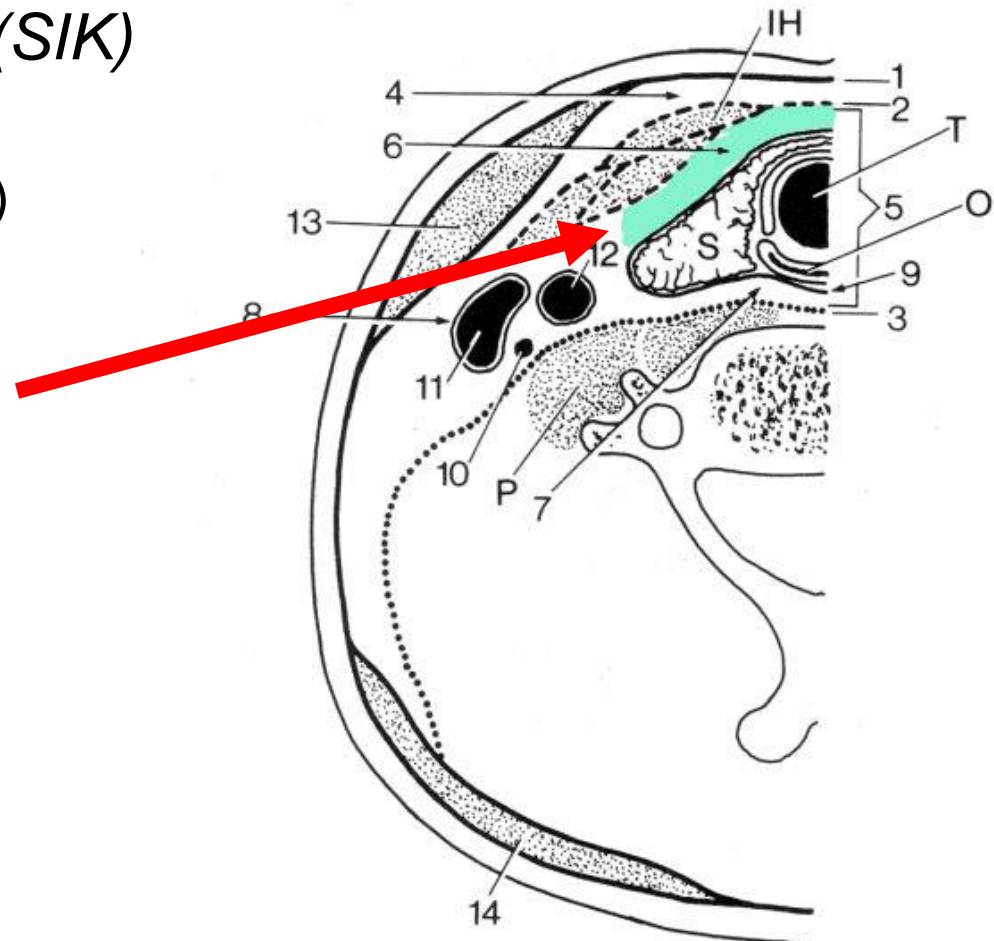
Bindevæv omkring halsviscera

- foran
- bagved
- lateralt



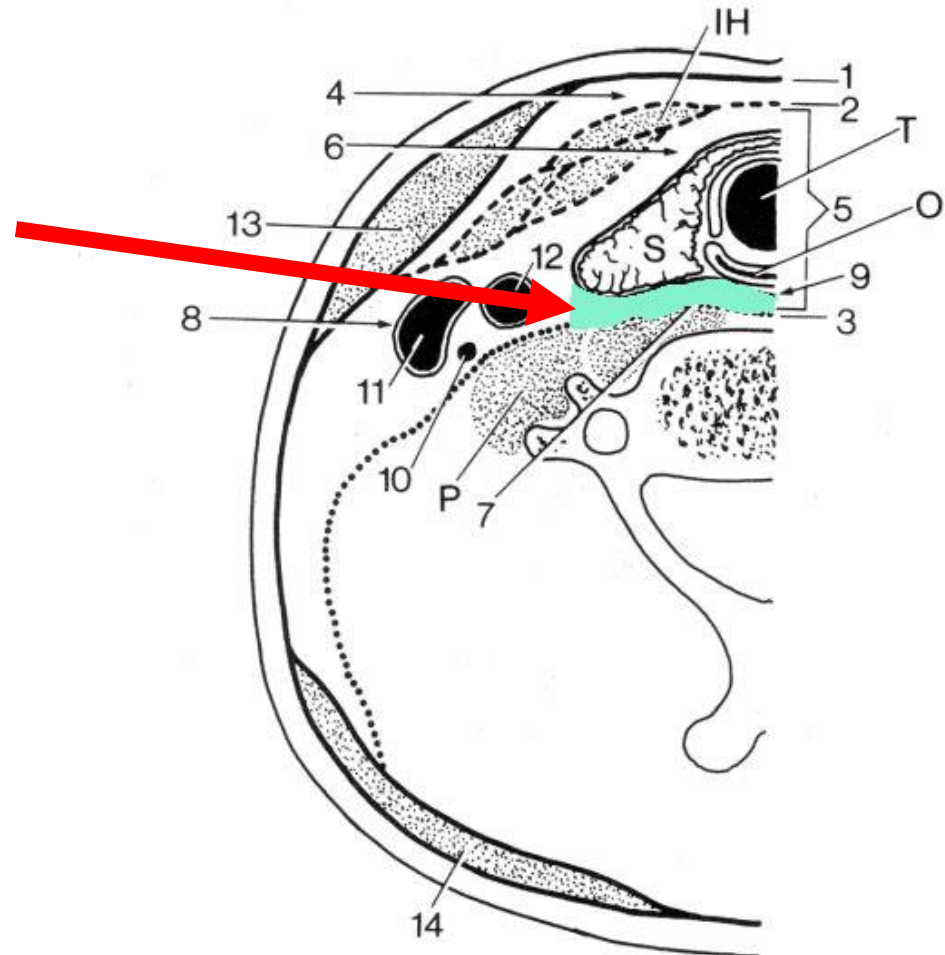
Bindevæv omkring halsviscera

- *spatium prepharyngeum (SIK)*
bindevæv foran viscera
(*spatium previscerale* i index)



Bindevæv omkring halsviscera

- *spatium retropharyngeum*
bindevæv bag viscera



Bindevæv omkring halsviscera

- *spatium lateropharyngeum*
(*spatium parapharyngeum*)
bindevævssøjle
fra apertura thoracis sup.
til basis cranii
med kar, nerver

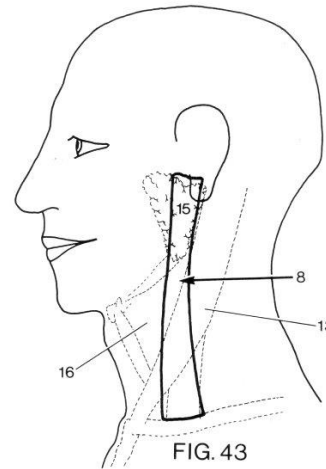


FIG. 43

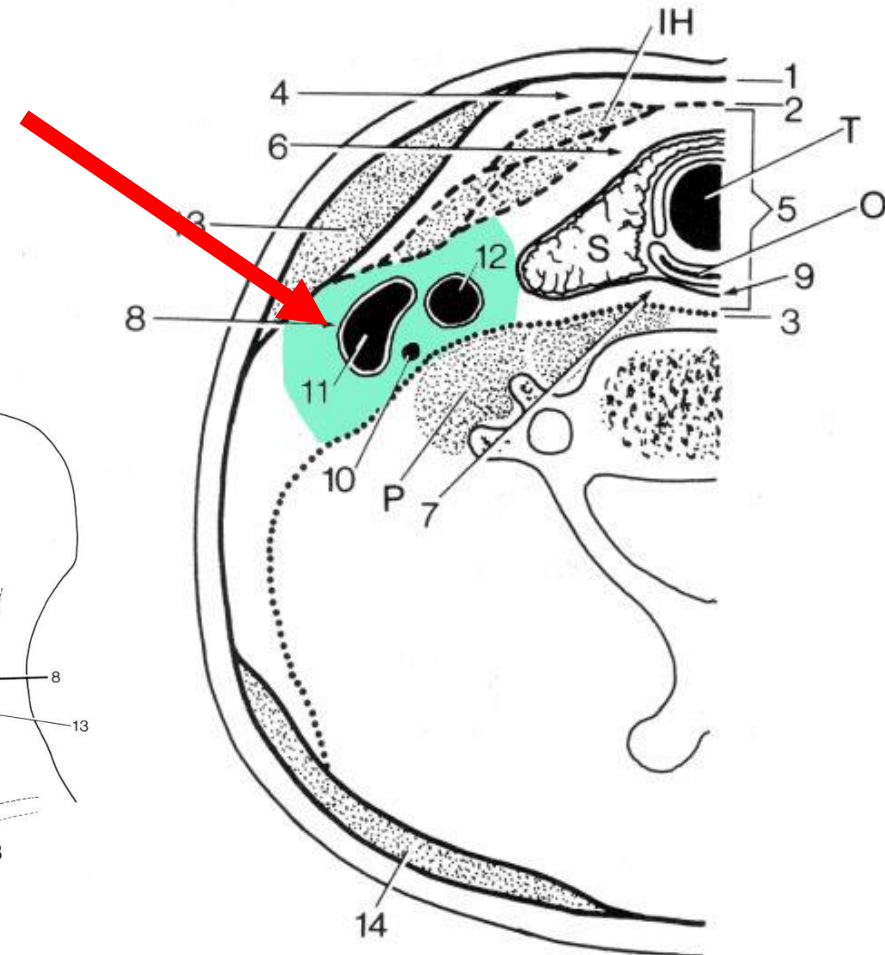
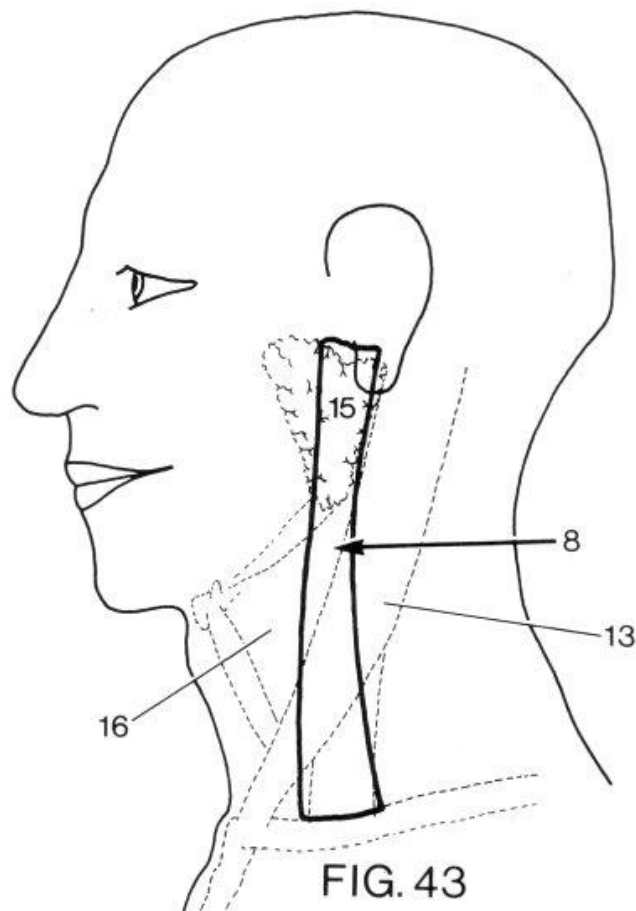


FIG. 42

Halsens fascier og bindevævsrum (video)



Halsmuskler og lag

Halsens muskellag (3)

Nævn halsens lag (3)

..

..

..



eMuseum

- **m. digastricus** [Aa2-202](#) (39-8) (40-7)
[Aa2-30](#) (24-14)
- **m. digastricus, venter anterior**
[Aa2-66](#) (24-2)
- **m. digastricus, venter posterior**
[Aa2-66](#) (24-2)
[Aa1-16](#) (23-3)
- **m. mylohyoideus**
[Aa2-30](#) (24-14)
- **Gld. submandibularis**