

FORDØJELSESSYSTEMET

INTRODUKTION



ANATOMI



AARHUS
UNIVERSITET
INSTITUT FOR ODONTOLOGI OG ORAL SUNDHED

HENRIK LØVSCHALL
LEKTOR, PHD, TANDLÆGE



Digestive System

ACCESSORY ORGANS:

Salivary glands

- Saliva moistens food
- Bicarbonate maintains pH
- Amylase digests starch
- Lysozyme inhibits bacteria

Liver

- Produces bile
- Performs various functions associated with processing and storing nutrients

Gall bladder

- Stores and concentrates bile

Pancreas

- Secretes digestive enzymes into small intestine
- Secretes bicarbonate into small intestine to neutralize stomach acid

ORGANS:

Mouth

- Teeth chew food
- Tongue positions and tastes food

Pharynx

- Passageway for food and air
- Participates in swallowing

Esophagus

- Moves food from pharynx to stomach

Stomach

- Stores and mixes food
- Begins chemical digestion of protein by enzymes and acid
- Regulates delivery to the small intestine

Large intestine

- Absorbs nutrients
- Stores waste material

Small intestine

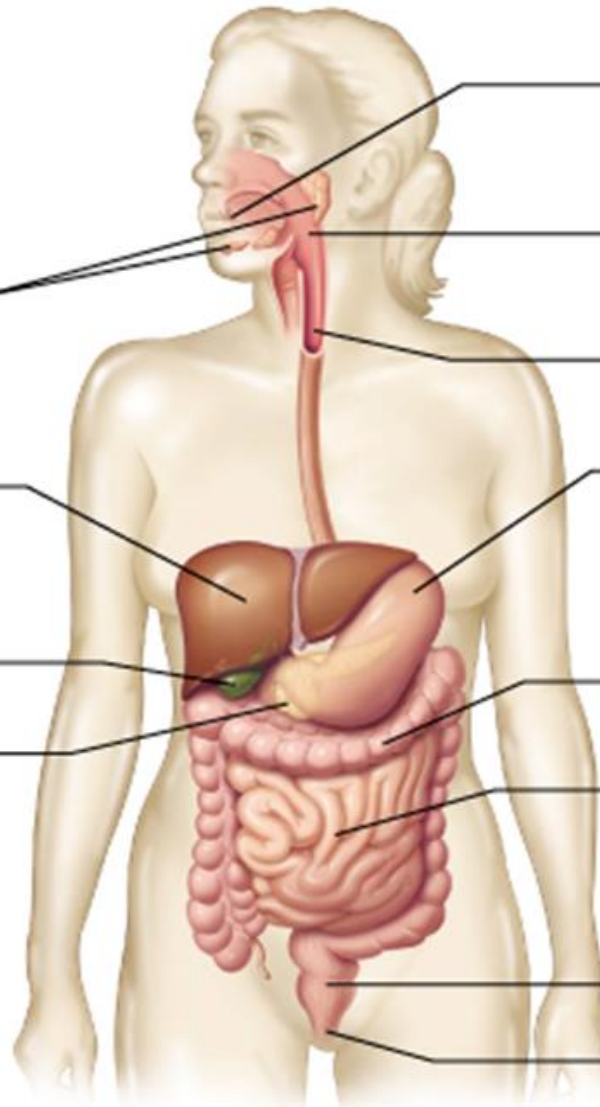
- Digests proteins, fats, and carbohydrates
- Absorbs most of the nutrients
- Secretes digestive hormones and enzymes

Rectum

- Passageway for feces

Anus

- Expells undigested material



FORDØJELSESSYSTEMET



APPARATUS DIGESTORIUS:

- Fordøjelseskanalen
- Kirtler

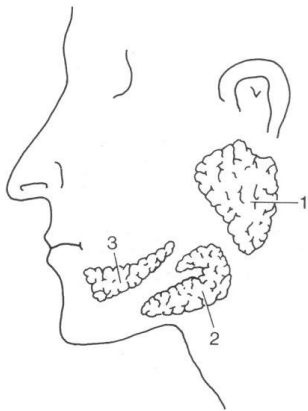


FIG. 2

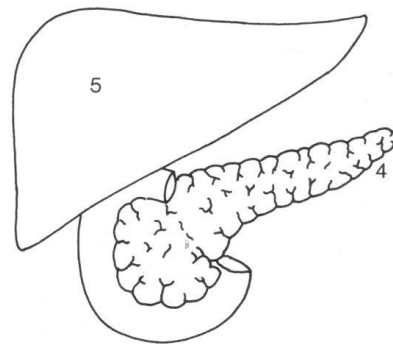


FIG. 3

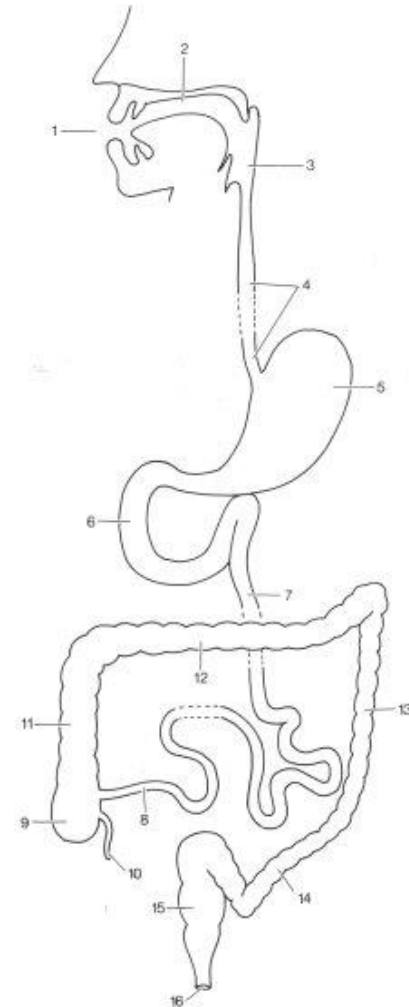


FIG. 1

FORDØJELSESKANAL



- Spiserøret
- Mavesækken
- Tyndtarmen
- Tyktarmen

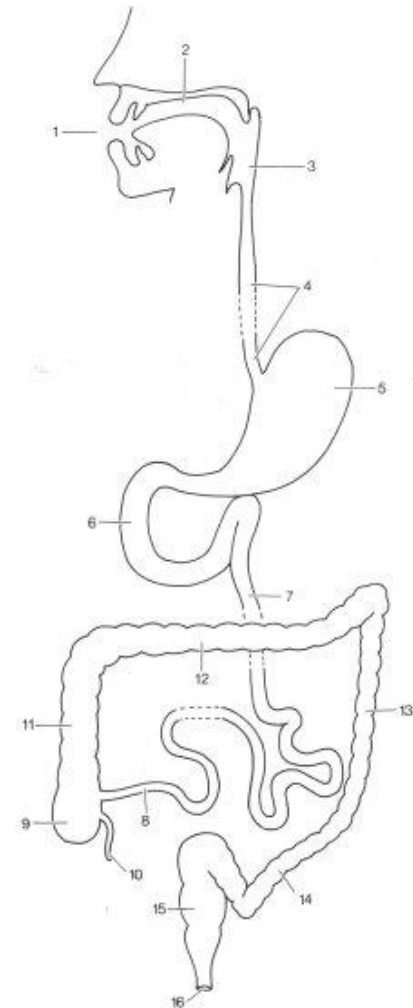
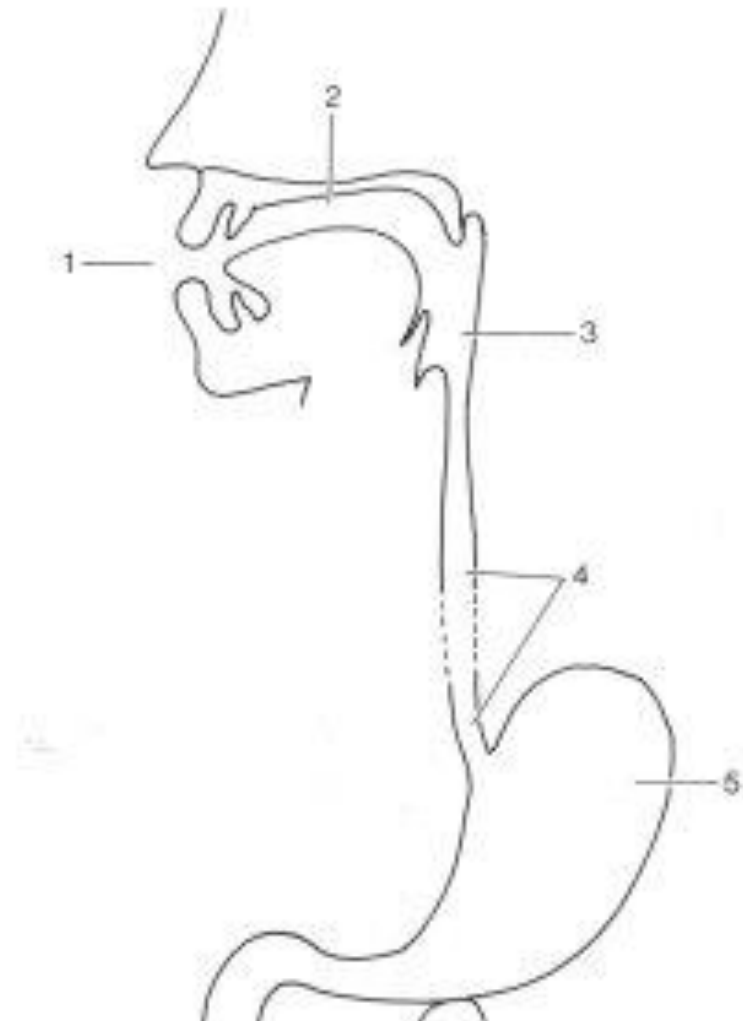


FIG. 1

FORDØJELSESKANALEN



- rima oris (mundspalten)
- cavitas oris (mundhulen)
- pharynx (svælget)
- oesophagus (spiserøret)
- gaster (mavesækken)

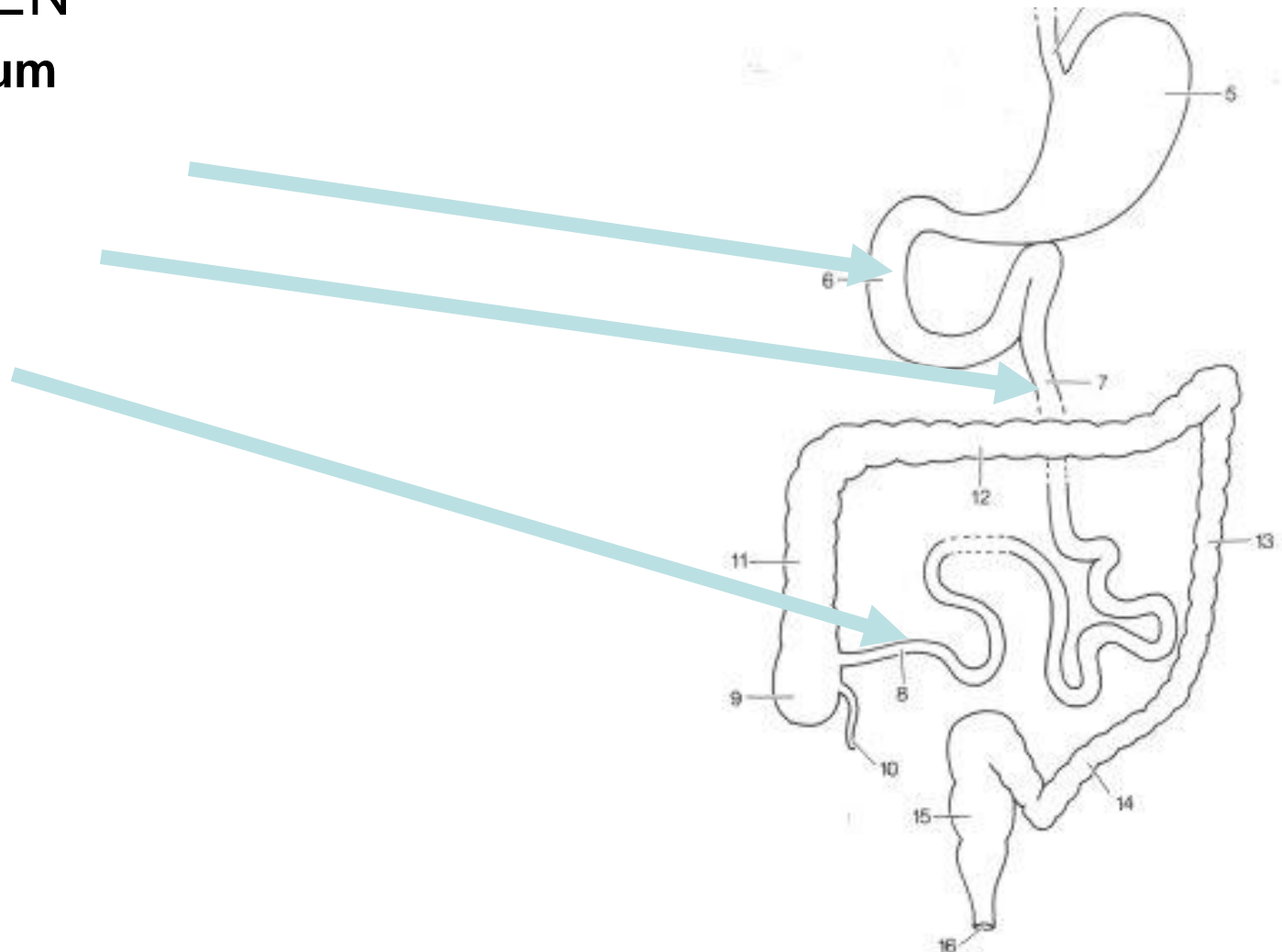


FORDØJELSESKANALEN



TYNDTARMEN

- duodenum
- jejunum
- ileum



FORDØJELSESKANALEN



TYNDETARMEN

- uden krø• **duodenum** tolvfingertarmen, første afsnit
- med krø• **jejunum** den tomme tarm, første 2/5 afsnit• **ileum** den snoede tarm, sidste 3/5 afsnit

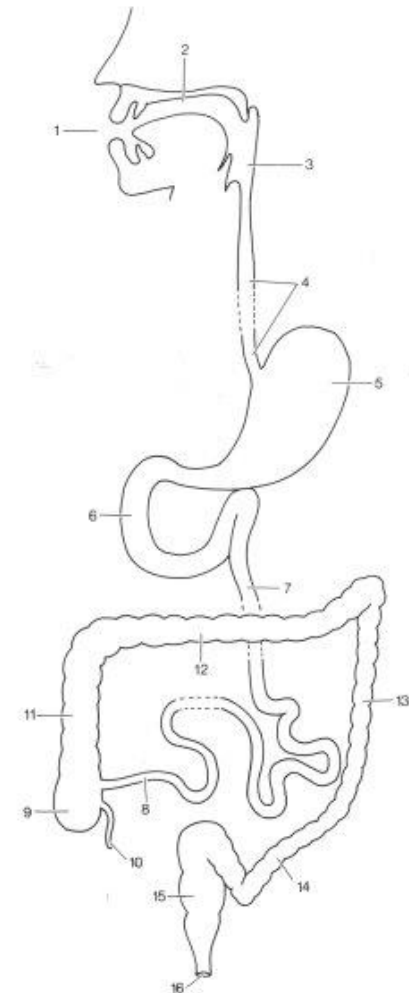


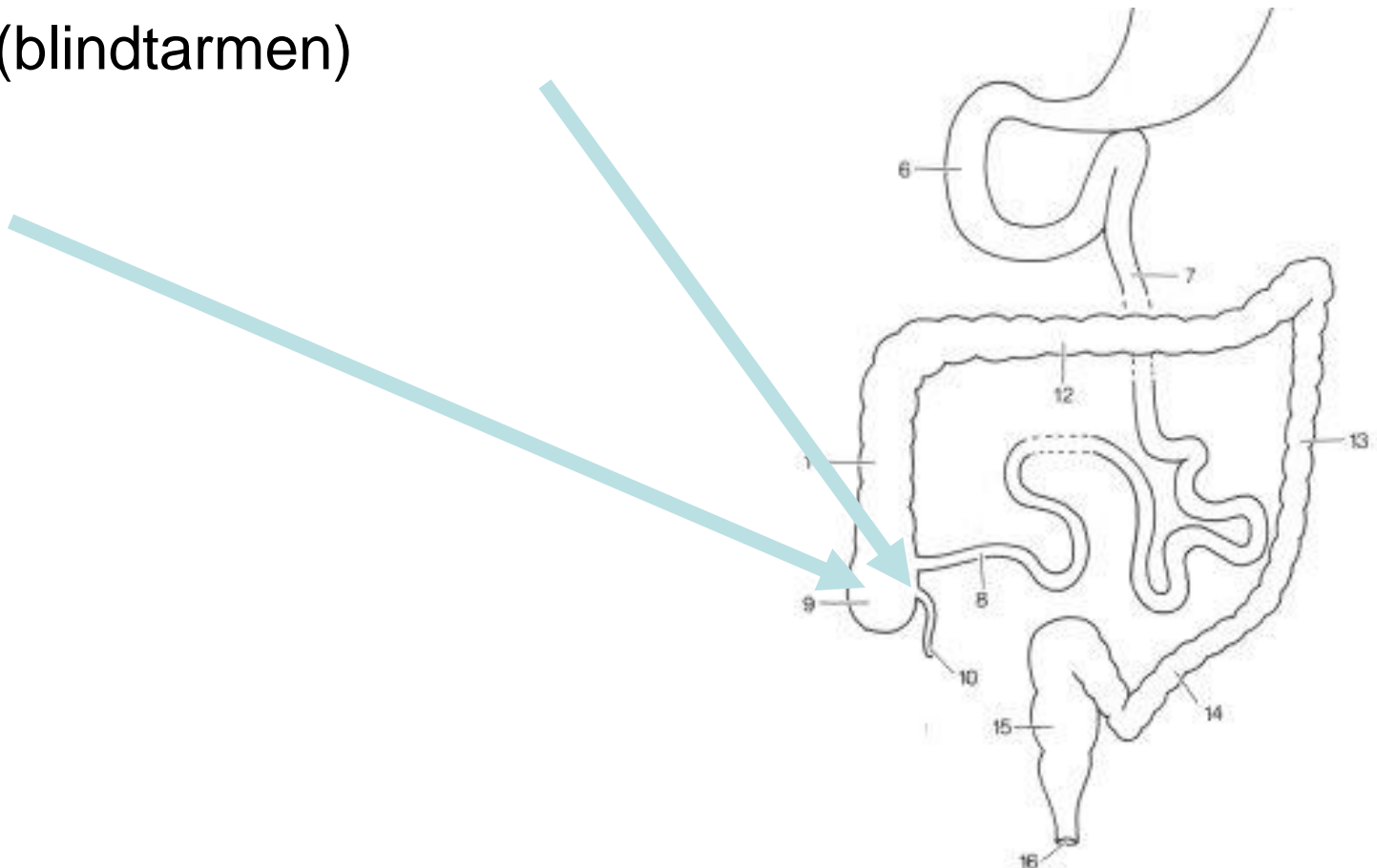
FIG. 1

FORDØJELSESKANALEN



TYKTARMEN

- appendix vermiformis
- coecum (blindtarmen)

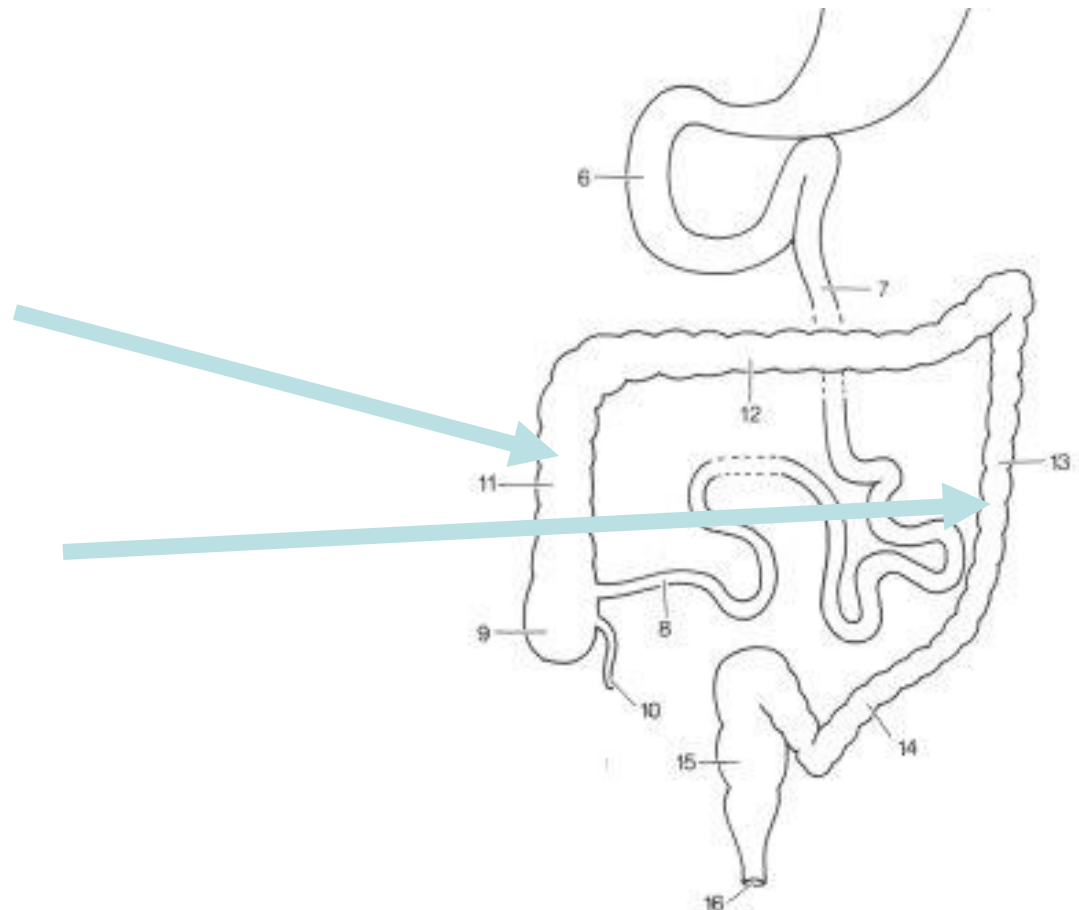


FORDØJELSESSYSTEMET



TYKTARMEN

- coecum
- appendix vermiformis
- colon ascendens
- colon transversum
- colon descendens

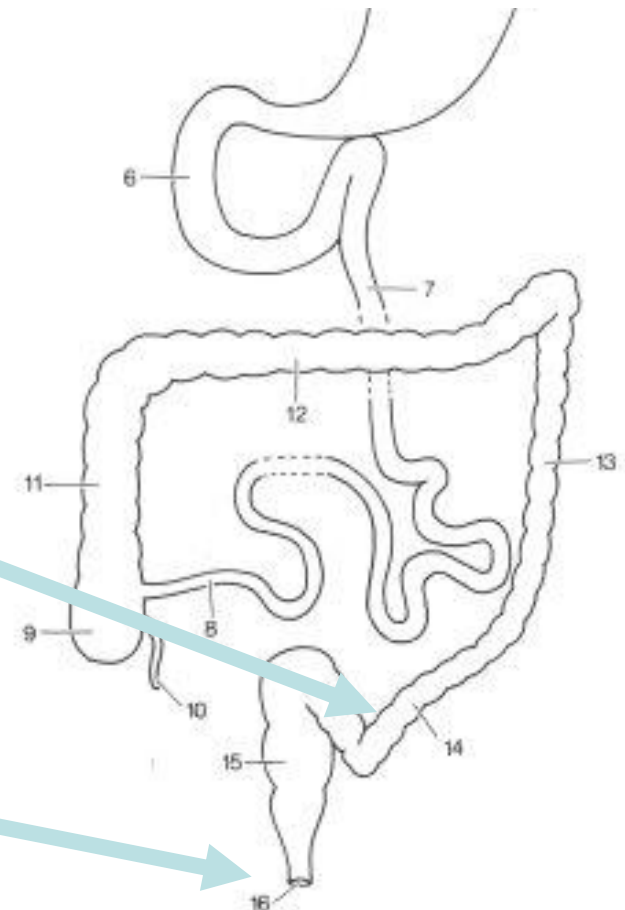


FORDØJELSESSYSTEMET



TYKTARMEN

- coecum
- appendix vermiformis
- colon ascendens
- colon transversum
- colon descendens
- colon sigmoideum
- rectum (endetarm)
 - canalis analis
- anus (endetarmsåbning)



FORDØJELSESSYSTEMET



KIRTLER

- Tre store spytkirtler
 - gl parotidea
 - gl sublingualis
 - gl submandibularis
- Lever (hepar)
- Bugspytkirtel (pancreas)

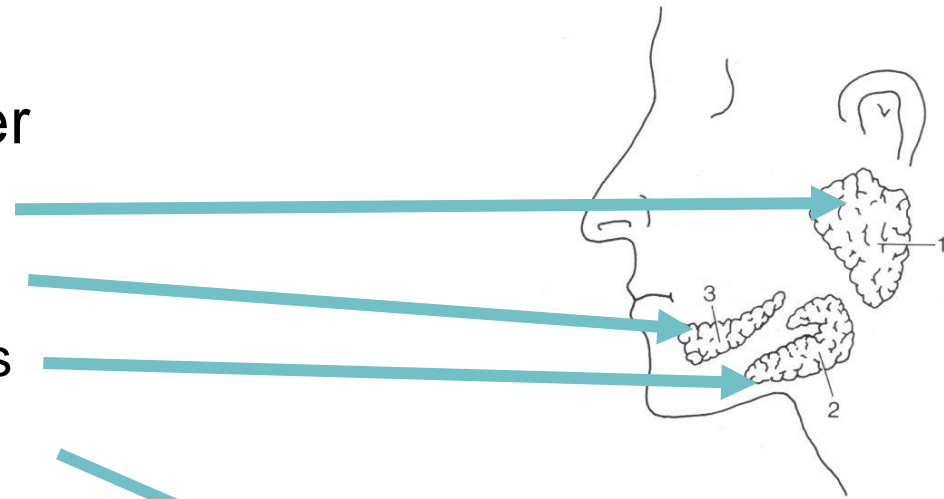


FIG.2

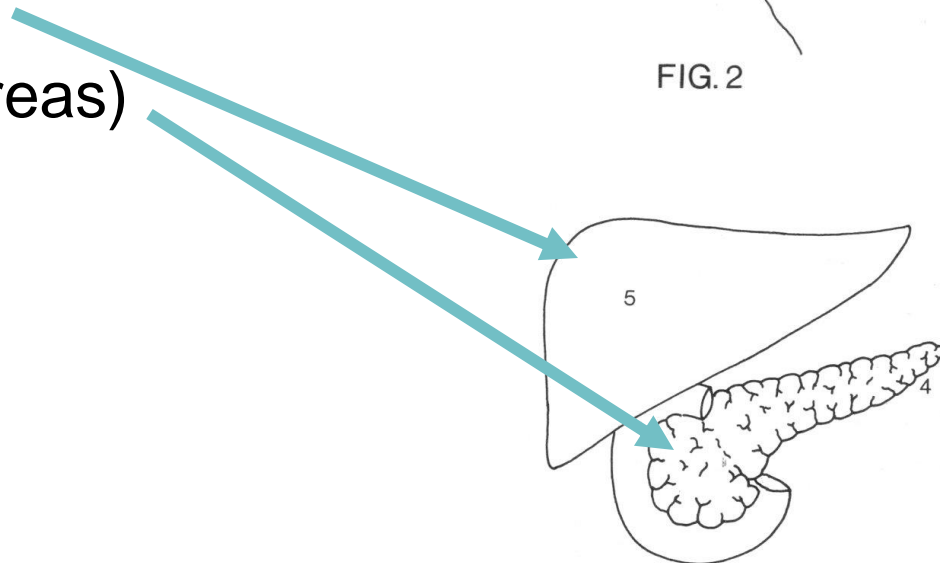


FIG.3

Peerfeedback 2 og 2 - evt 3

Tarmen

Hvordan inddeler vi tyndtarmen (3) ?		
Hvordan inddeler vi tyktarmen (4) ?		
..colon		
..		

