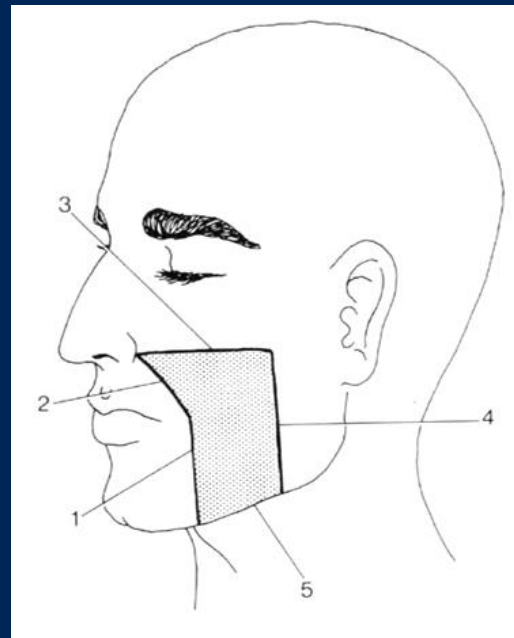


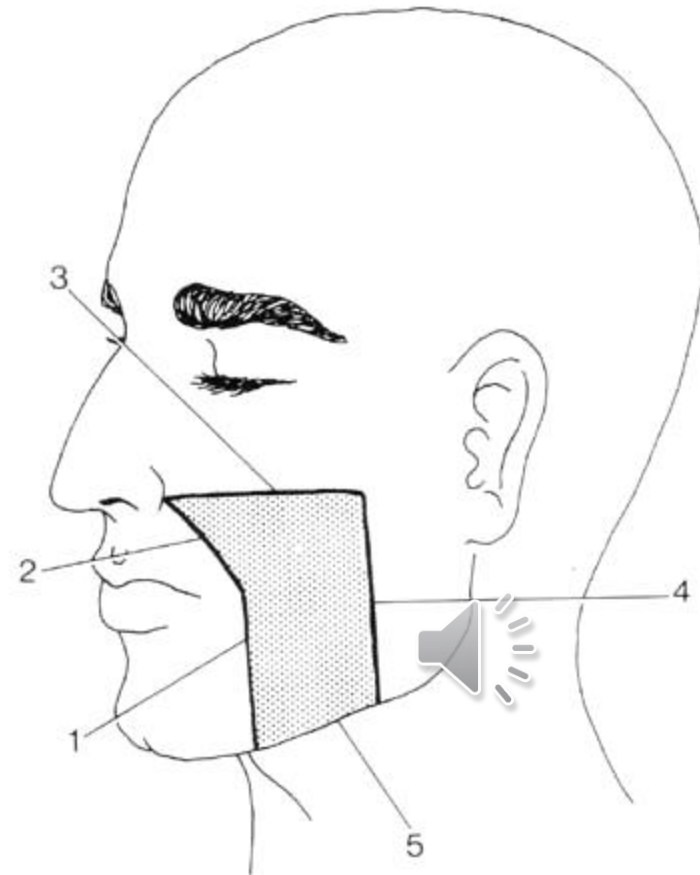
KINDEN

regio buccalis



KINDEN

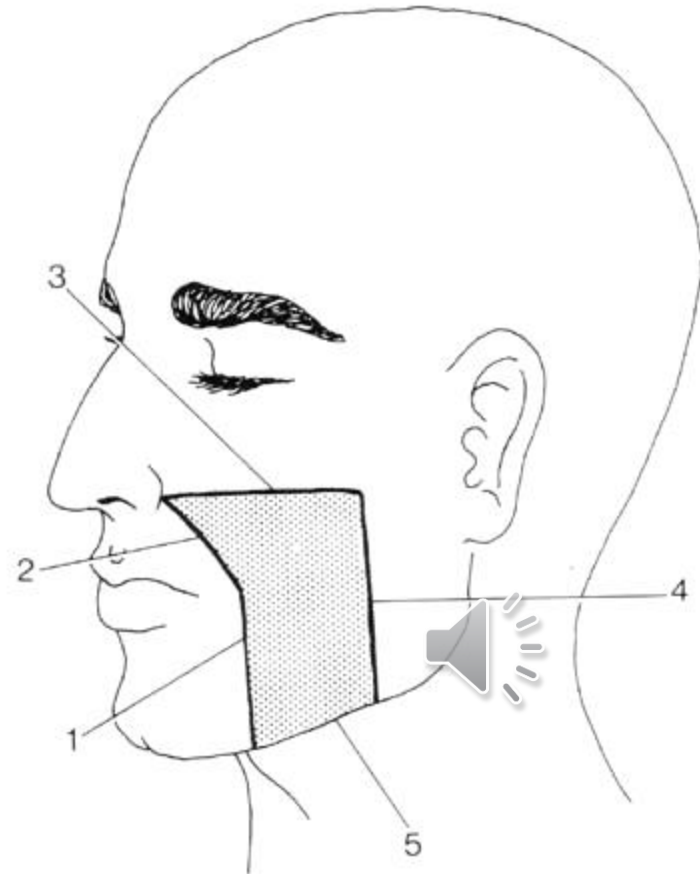
- Regio buccalis



Regio buccalis

Regioner fortil

- regio oralis og regio mentalis



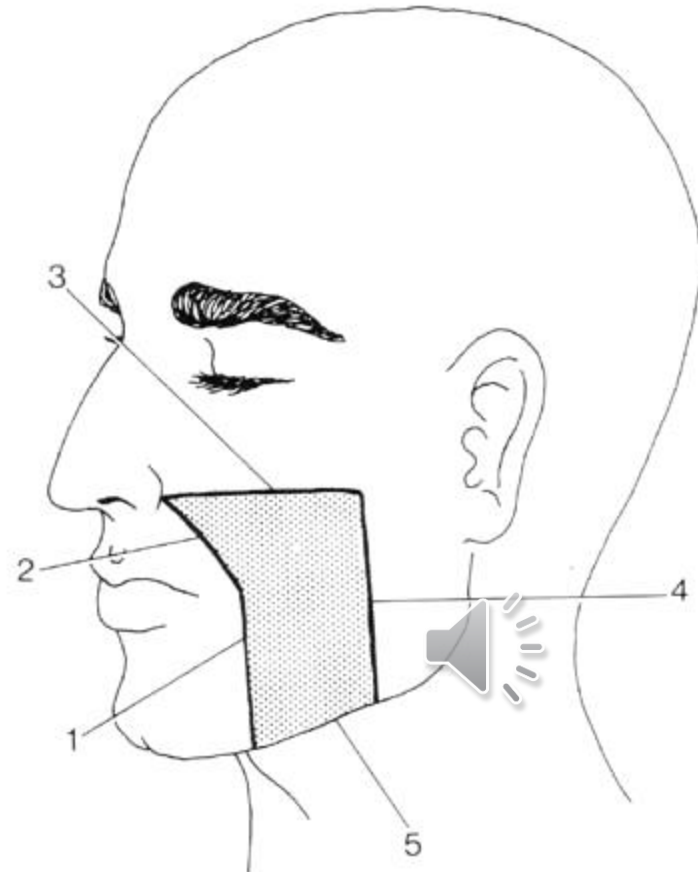
Regio buccalis

Grænser fortil:

- lodret linje fra basis mandibulae
- til commissura labiorum
- langs sulcus buccolabialis
- langs sulcus nasolabialis
- til næsefløjen

Grænser nedadtil:

- basis mandibulae



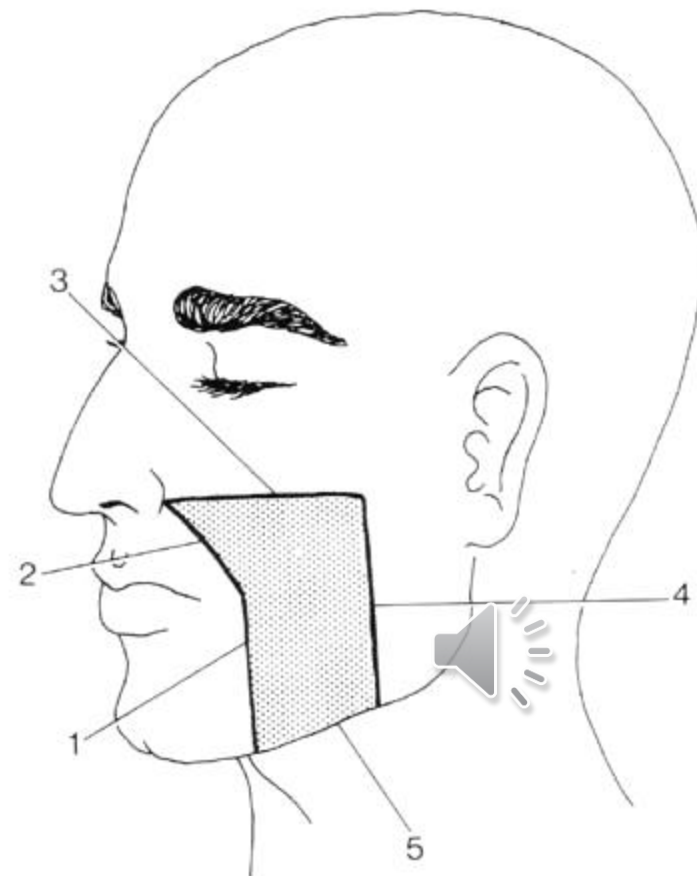
Regio buccalis

Grænser opadtil:

- fra næsefløjen
- til underkant af arcus zygomaticus

Grænser bagtil:

- forkant af m. masseter



Regio buccalis

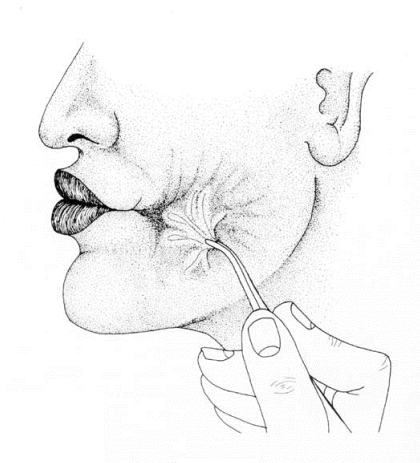
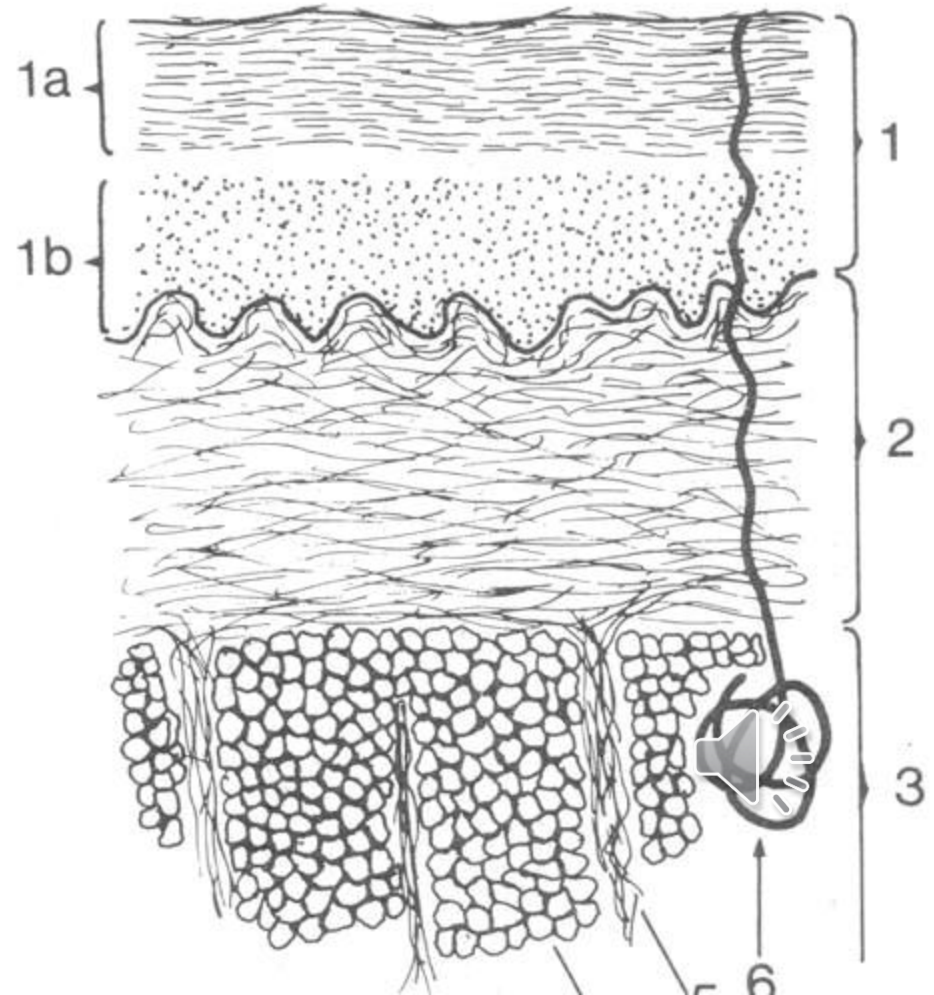
Lagdeling:

- ”som i læberne”
 - Cutis
 - Subcutis
 - Tela submucosa
 - Tunica mucosa



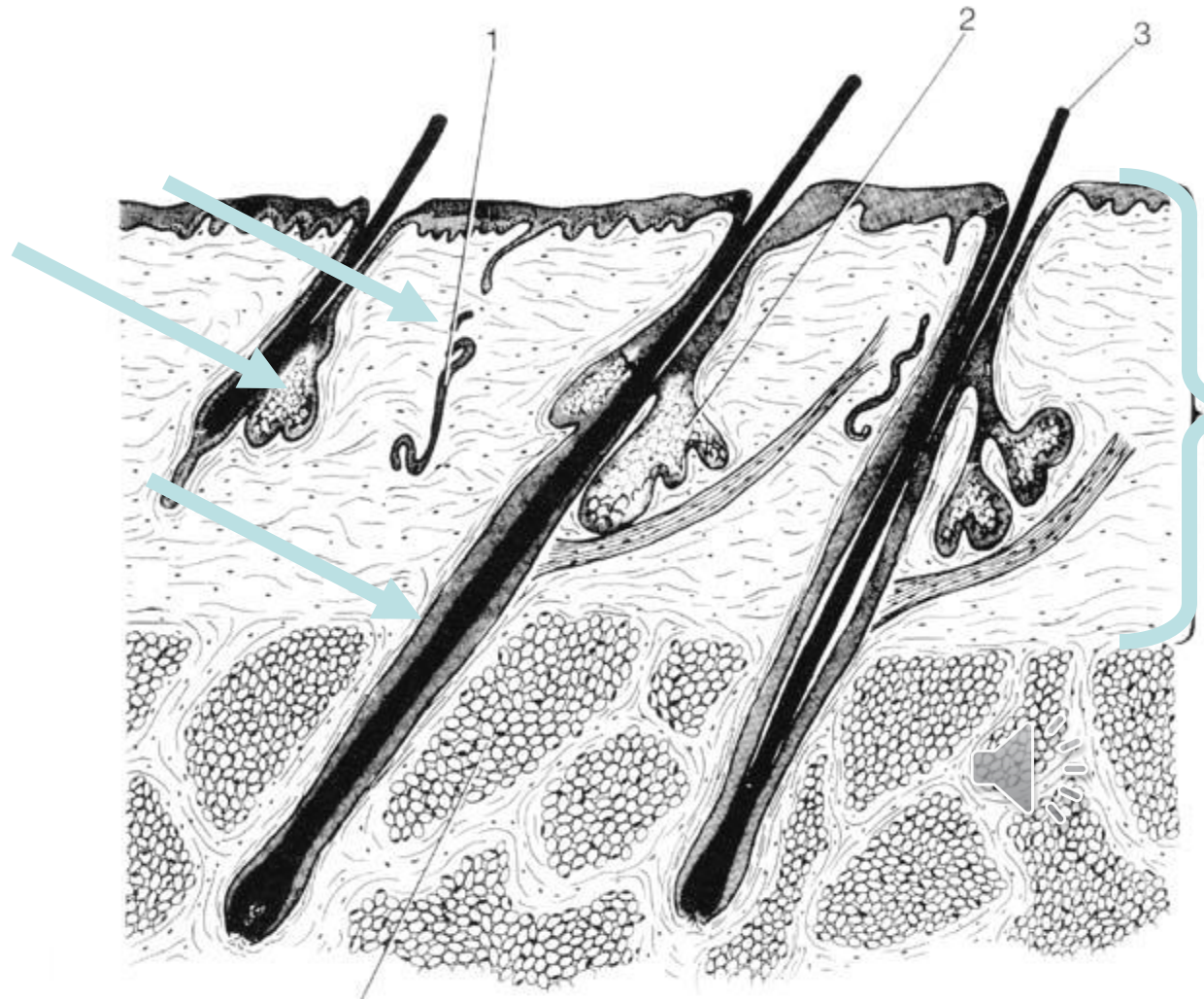
Regio buccalis

- Cutis (1):
 - Epidermis (1a) - består af flerlaget pladeepitel med forhorning
 - Dermis (1b) – fibrillært kollagent fast uorganiseret bindevæv med mange elastiske fibriller
- Subcutis (2)
 - Huden er her løst bundet



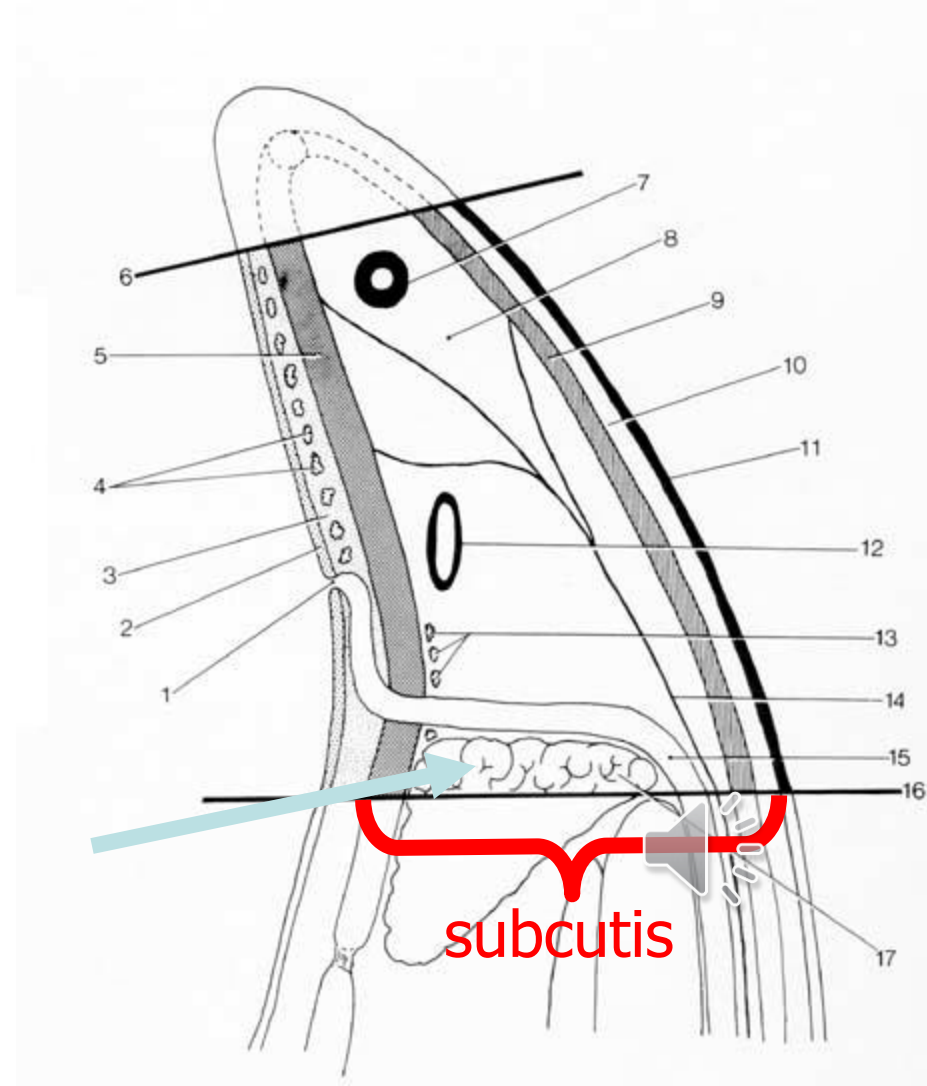
Regio buccalis

- Cutis:
 - svedkirtelgange
 - talgkirtler
 - hår



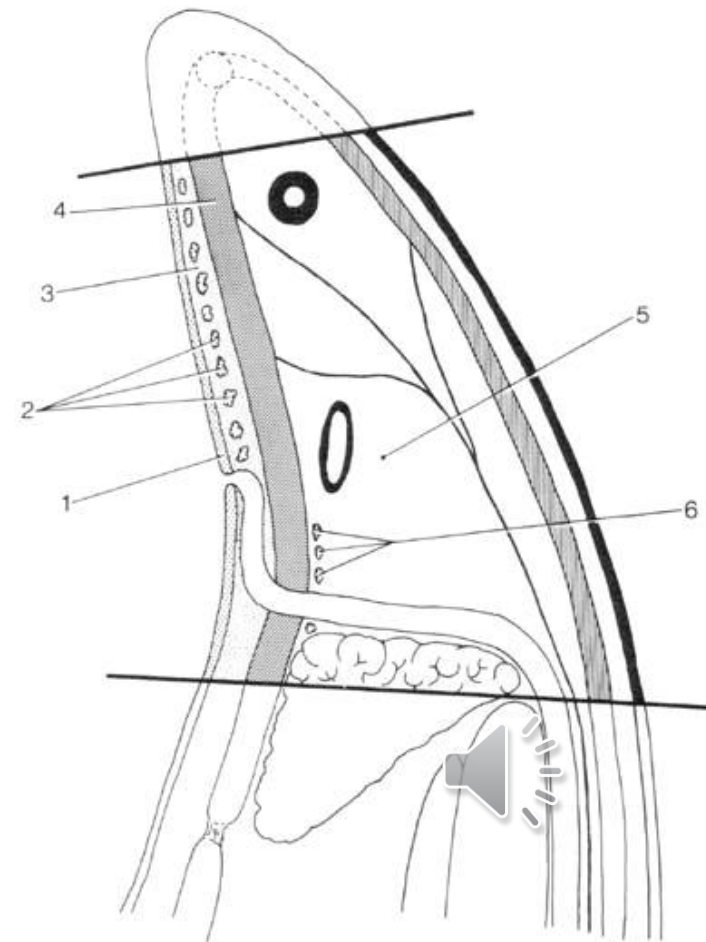
Regio buccalis

- Subcutis:
 - a. facialis (7)
 - v. facialis (12)
 - n. facialis (14)
 - muskellag i subcutis (5 & 9)
 - gll molares (13)
 - ductus parotideus (1)
 - corpus adiposum buccae (17)



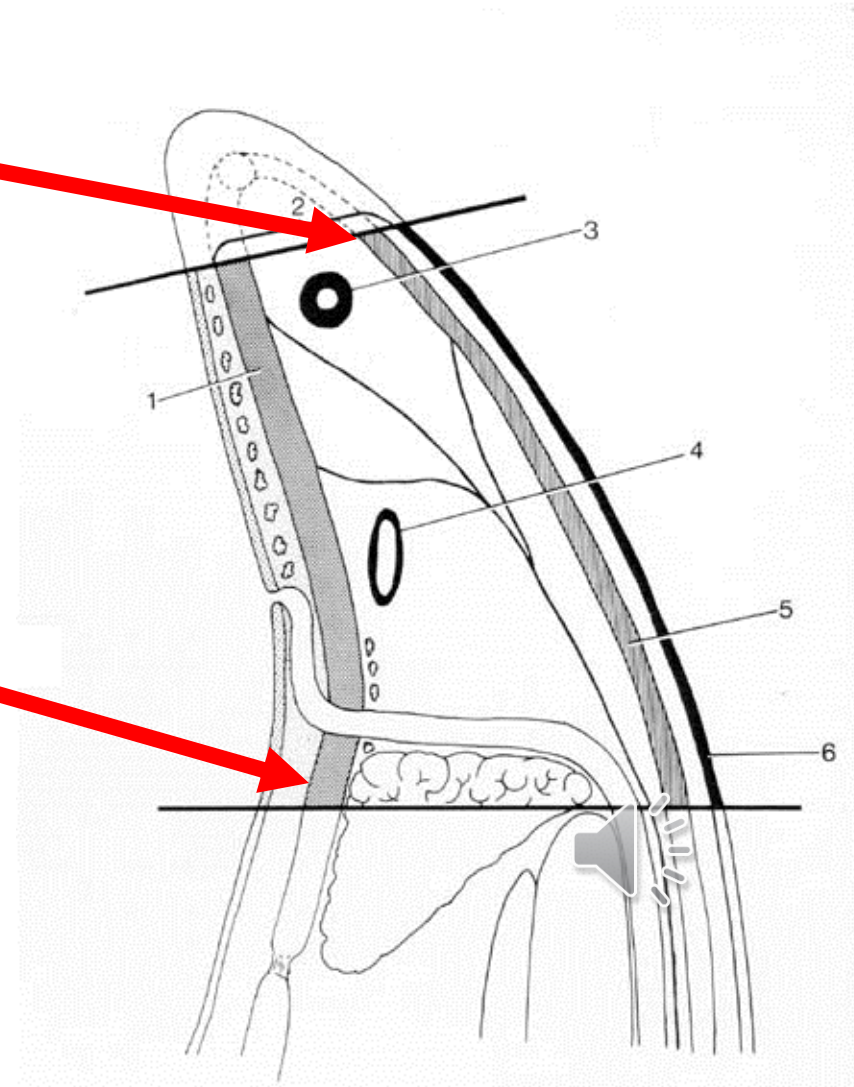
Regio buccalis

- Tela submucosa:
 - gll buccales (2)
 - ductus parotideus
- Tunica mucosa (1-3)



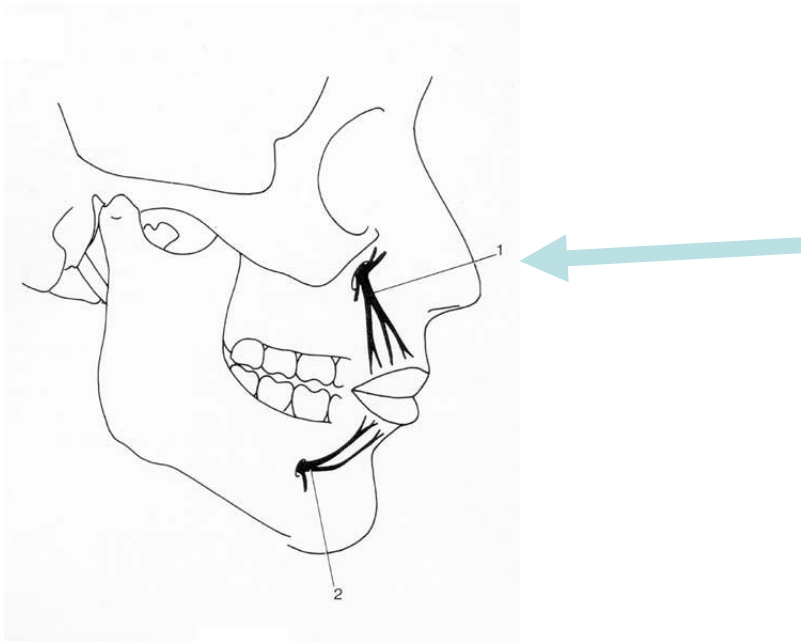
obs: "kindens muskler"

- Overfladisk lag
 - **m. risorius** (kindens)
 - platysma (halsens)
 - m.zygomaticus major (læbens)
 - m.zygomaticus minor (læbens)
 - m. depressor anguli oris (læbens)
- Underliggende lag
 - **m.buccinator** (kindens)
 - m.levator anguli oris (læbens)



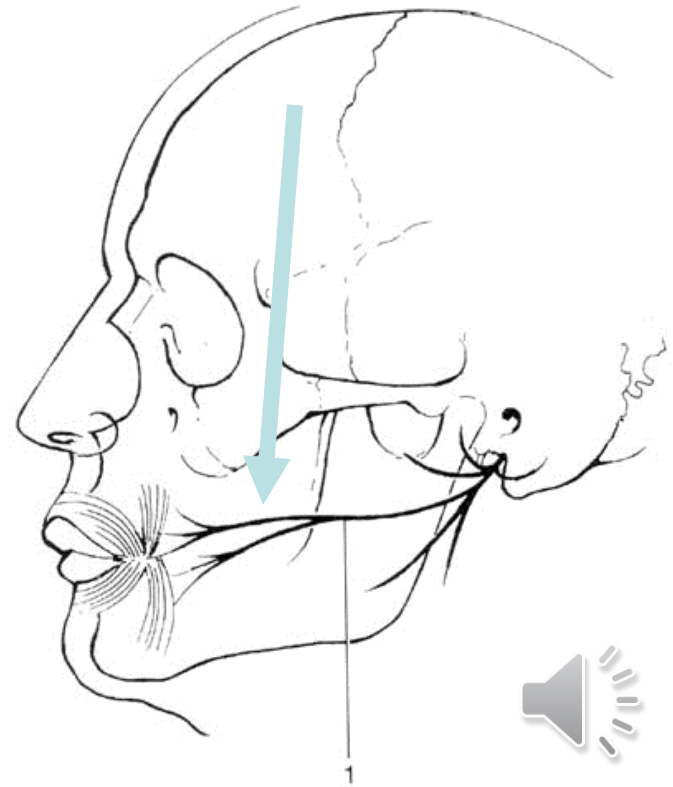
Innervation:

- Overlæbens hud og slimhinde, samt gingiva facialet for fortænder, hjørnetænder og præmolarer: *rami labiales superiores* fra *n. infraorbitalis*



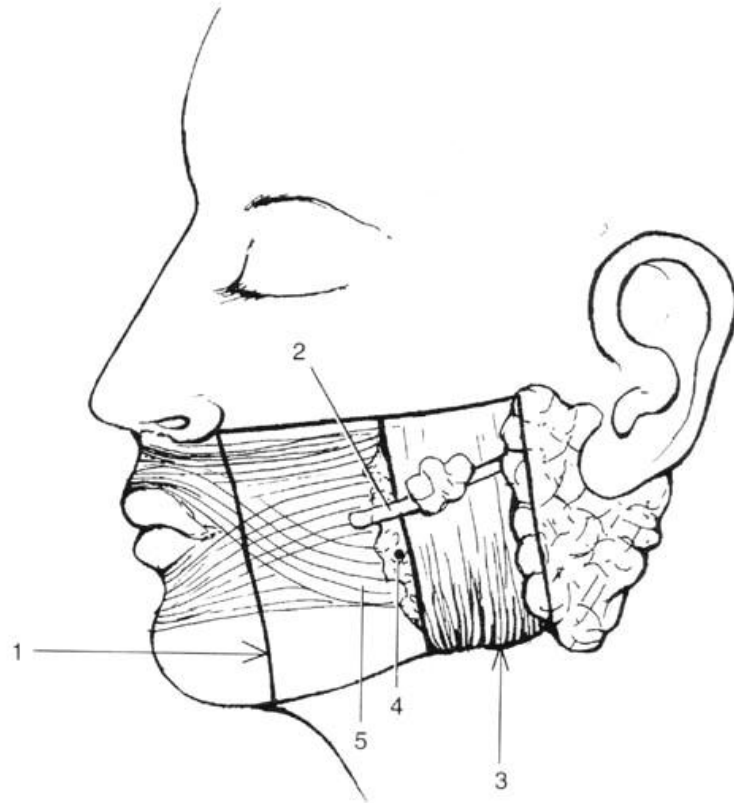
Innervation

Kindens muskler innerveres af: *rami buccales* fra *n. facialis*

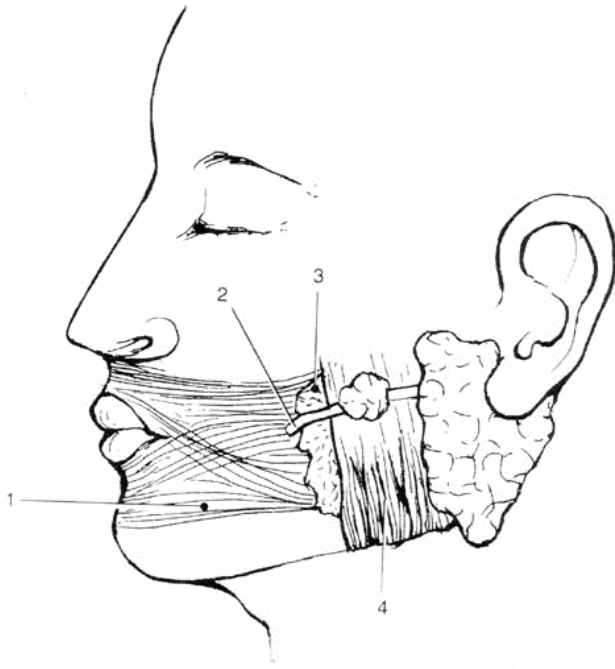


Kindens fedtlegeme

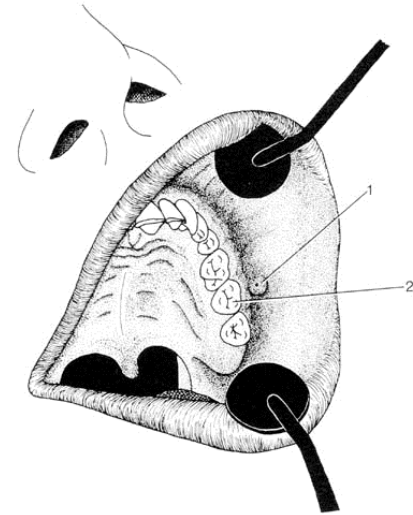
- Corpus adiposum buccae (4)



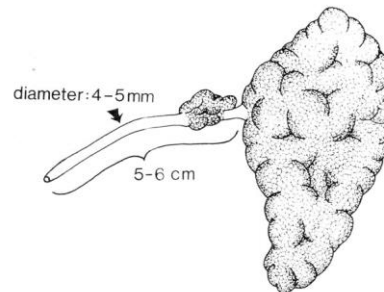
Ductus parotideus fedtlegeme



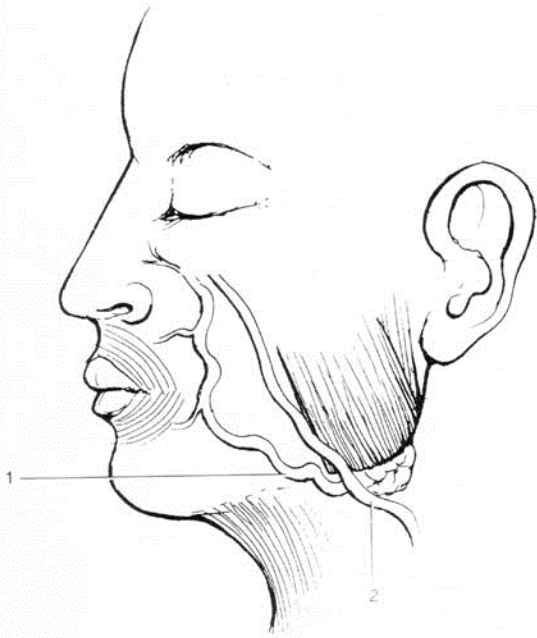
- Ductus parotideus (2)



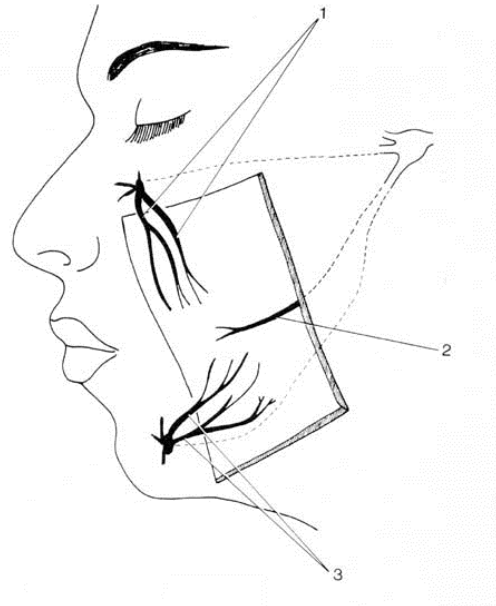
- Papilla parotidea (1)



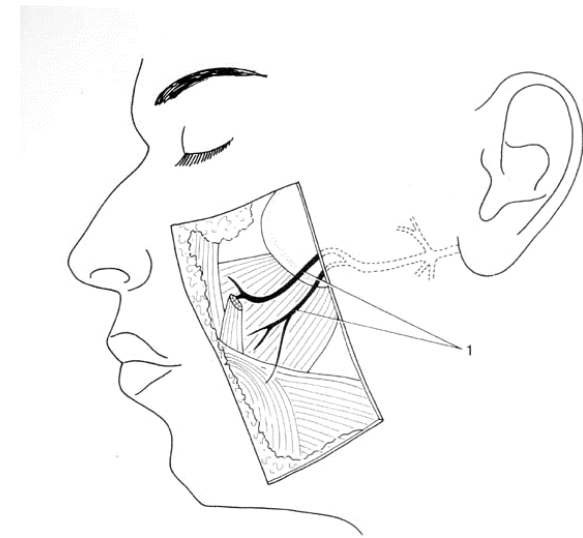
Kindens kar- og nerveforsyning



a. facialis – danner en bue foran v. facialis



sensitive nervegrene til kinden

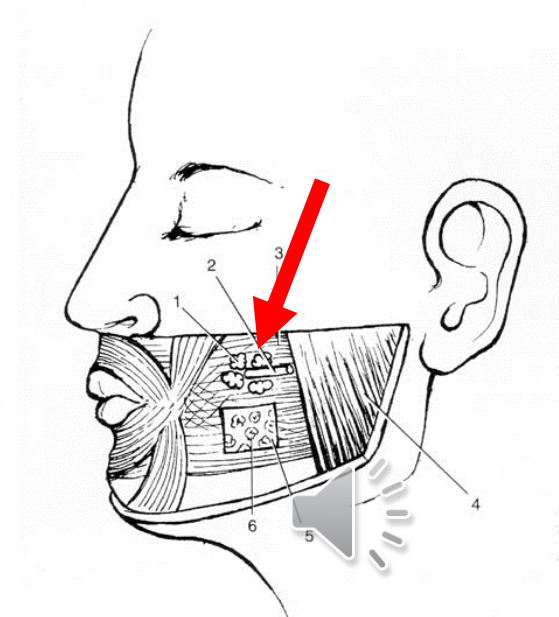
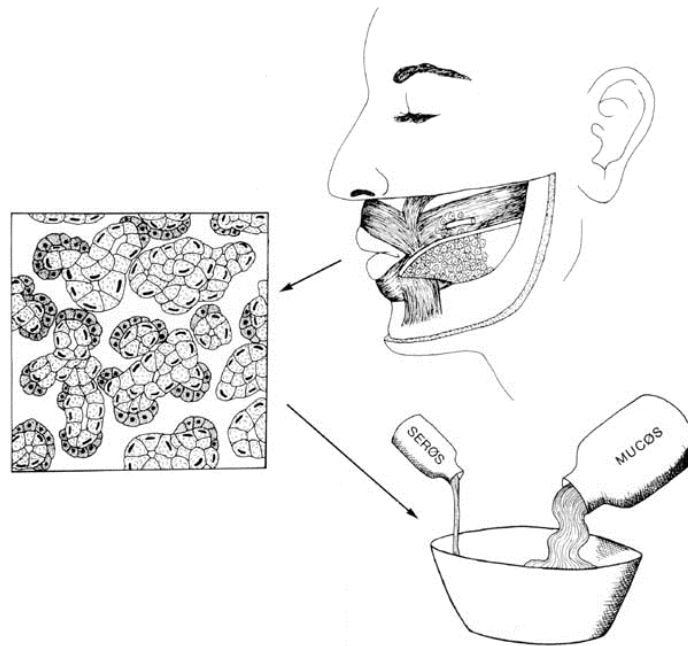
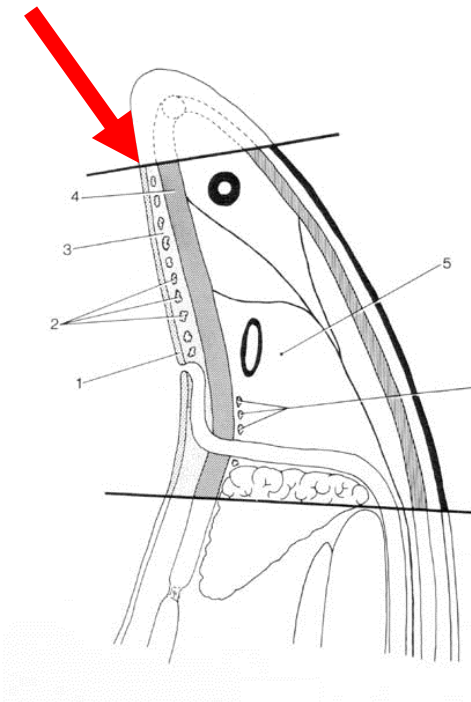


motoriske nervegrene til kindens muskler rami buccales

Kirtler i kinden

- GII buccales

- GII molares



Forbindelser fra regio buccalis

1. regio mentalis
2. regio oralis
 1. regio labialis superior
 2. regio labialis inferior
3. regio infraorbitalis
4. fossa infratemporalis og spatium lateropharyngeum
5. regio masseterica
6. trigonum submandibulare

