

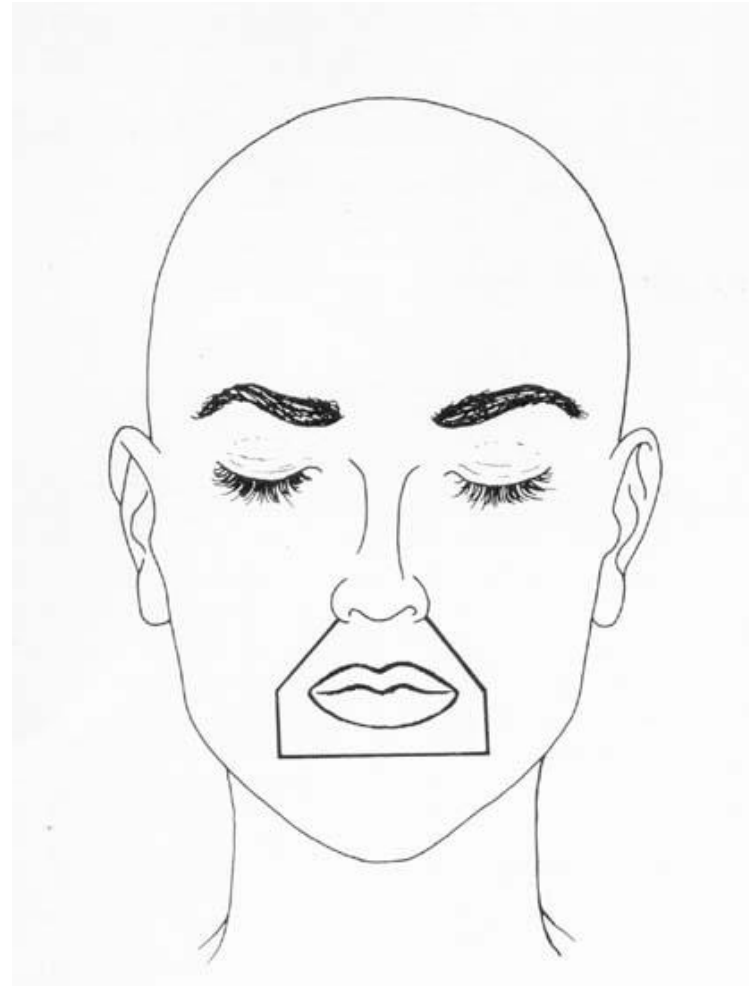
LÆBER

- danner mundregionen regio oralis



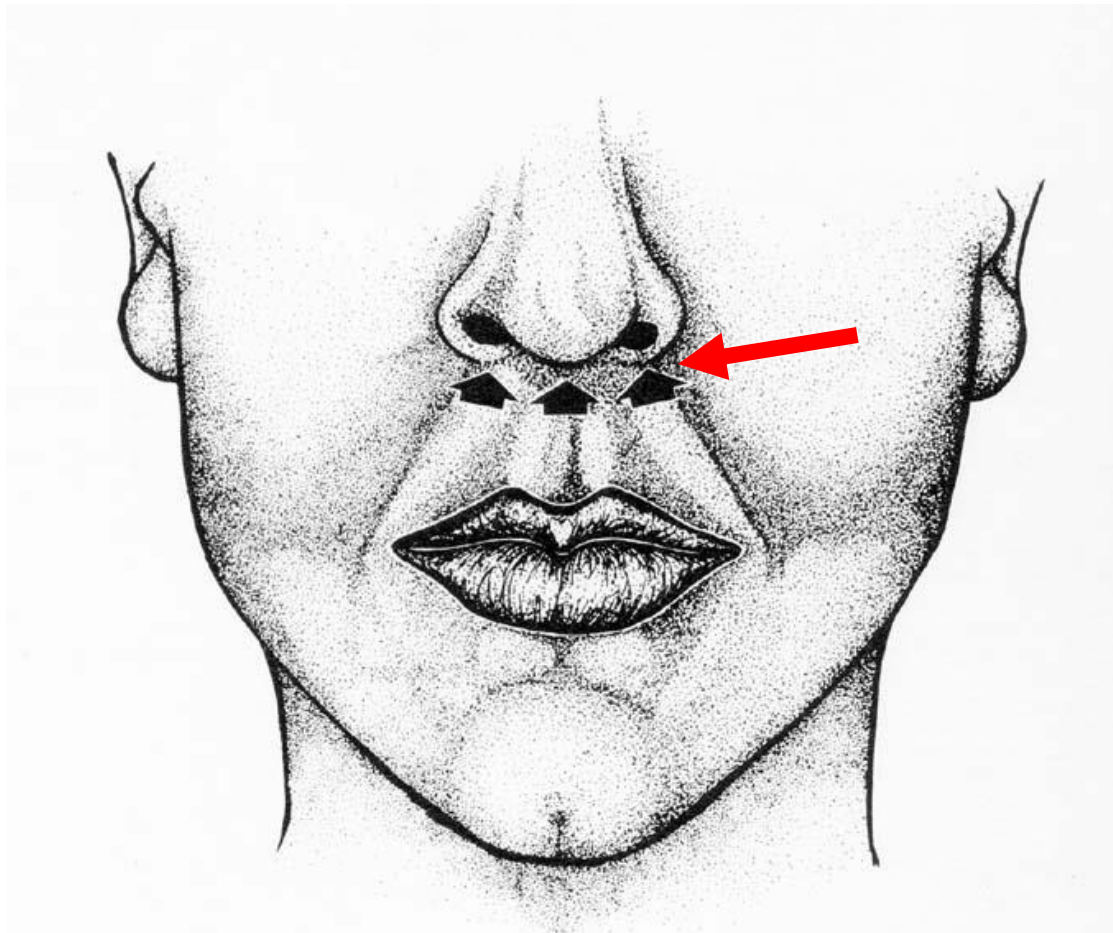
MUNDREGIONEN

- *Regio oralis*



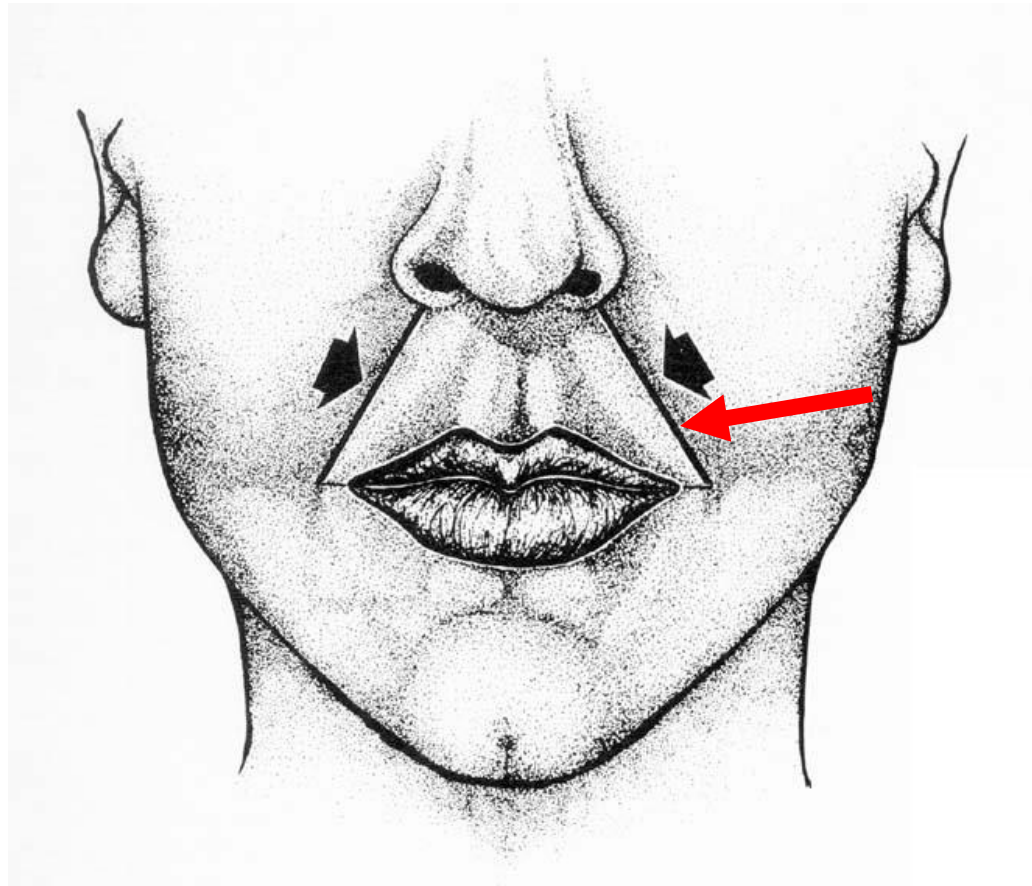
Afgrænsning af *regio oralis*

- Øvre grænse:
 - *nedre flade af næsen*



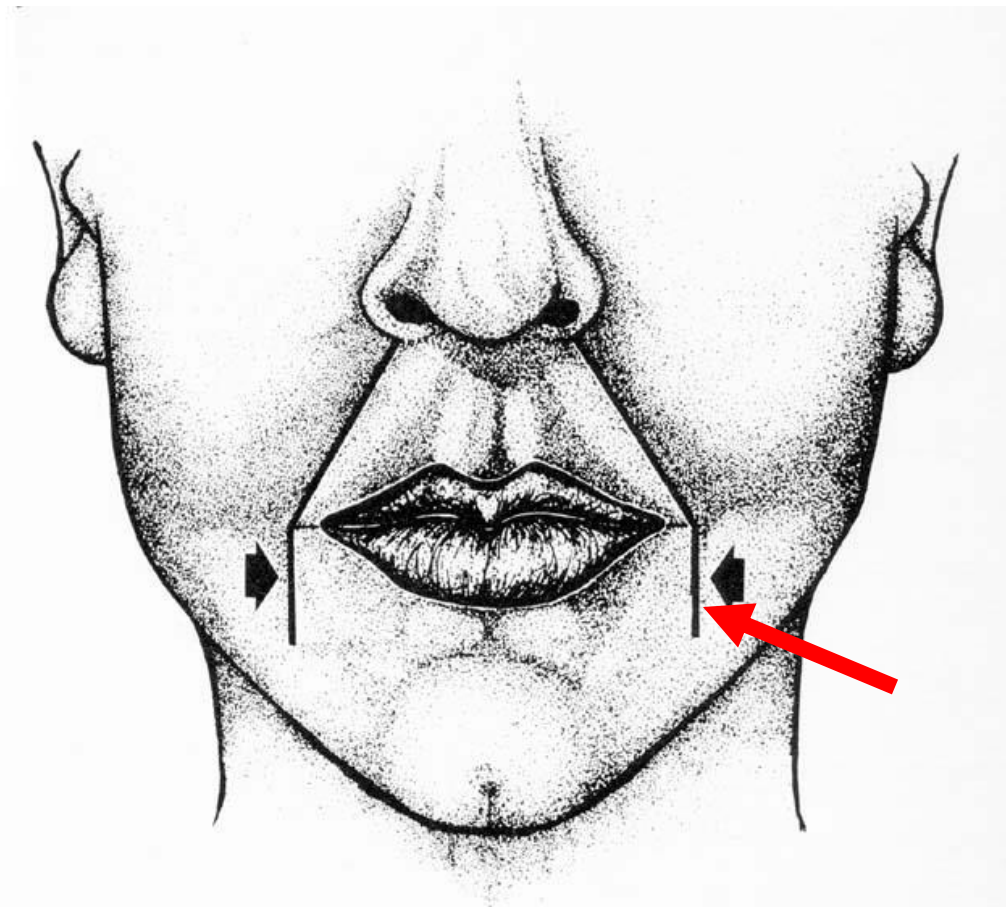
Afgrænsning af *regio oralis*

- Lateralt:
 - *sulcus nasolabialis*



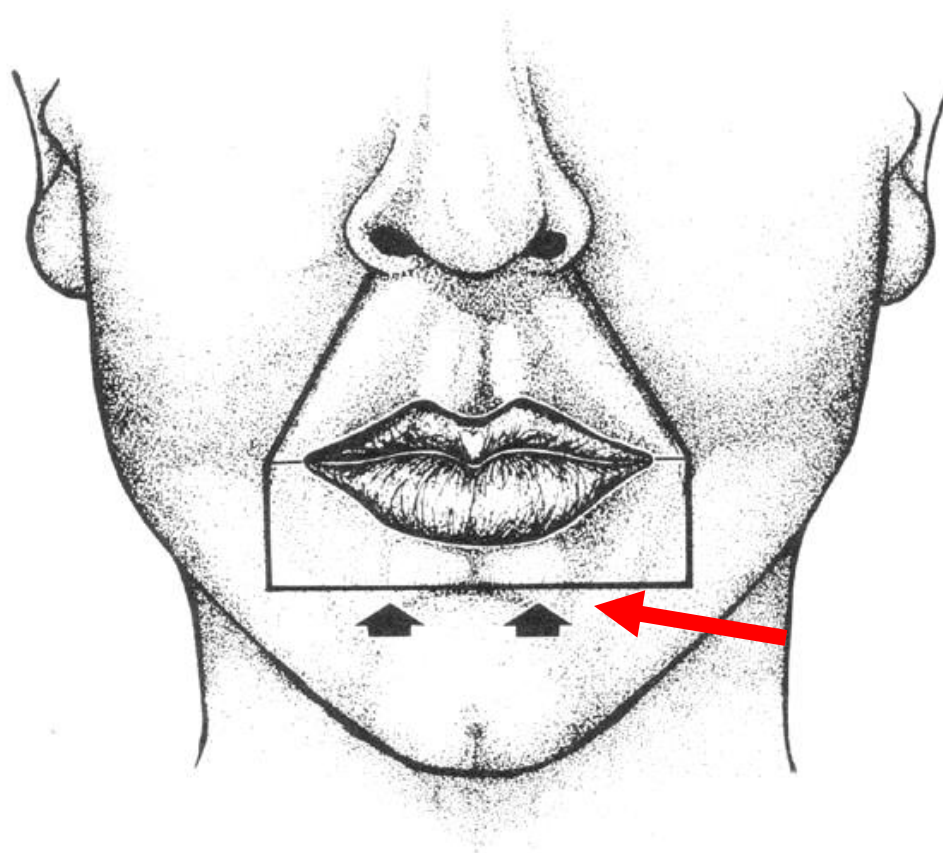
Afgrænsning af *regio oralis*

- Lateralt:
 - *sulcus buccolabialis*



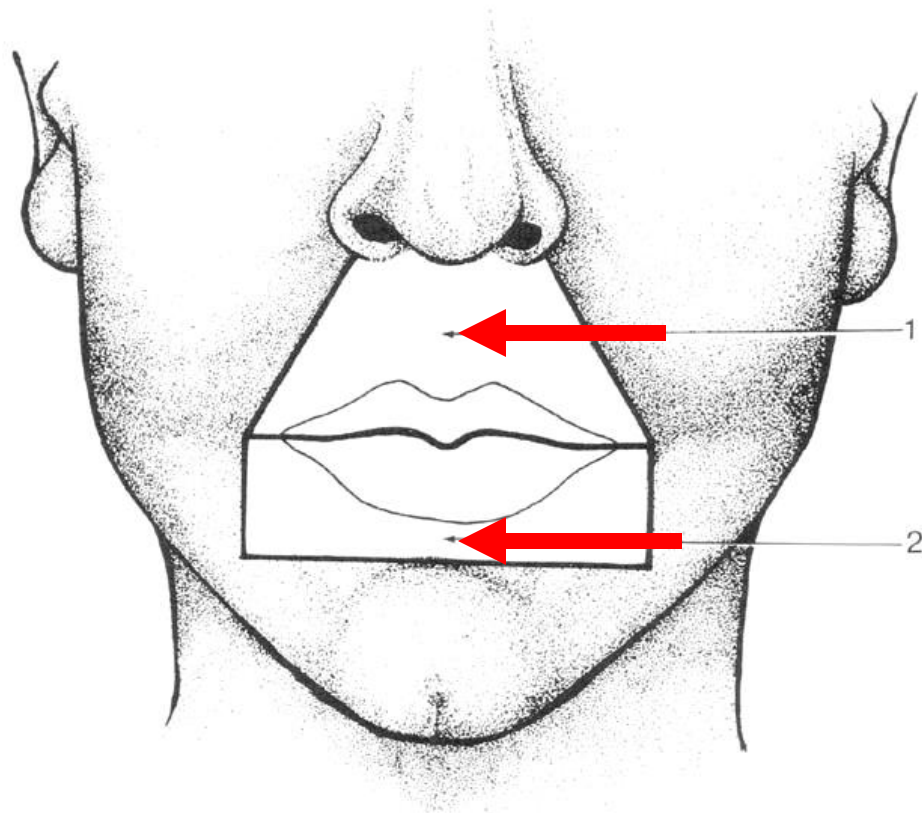
Afgrænsning af *regio oralis*

- Nedre grænse:
 - *sulcus mentolabialis*



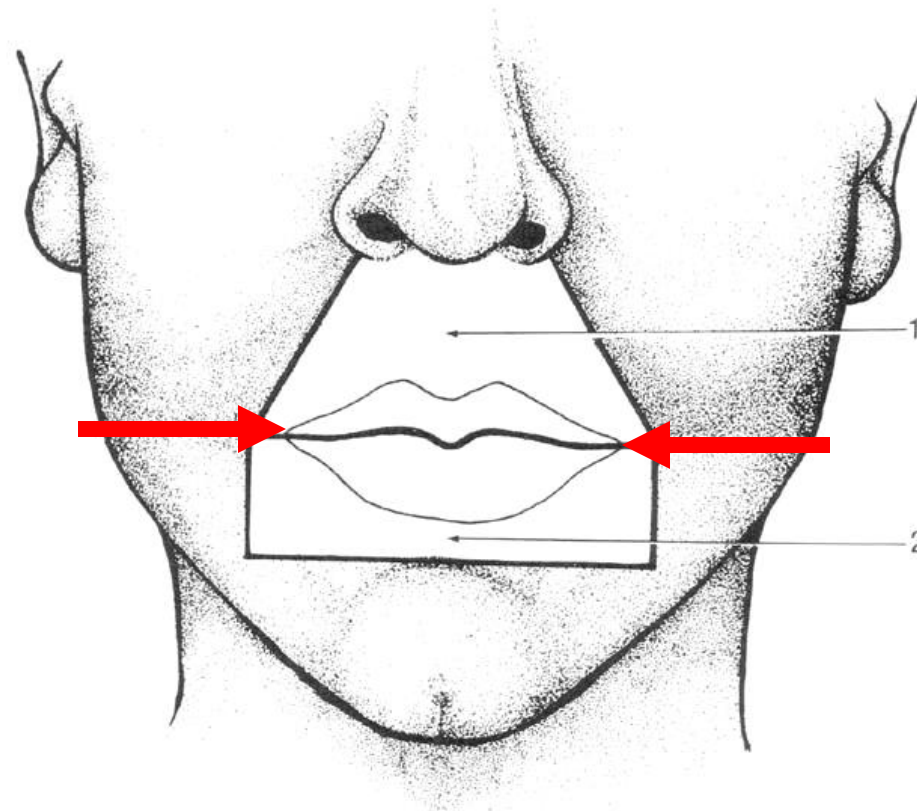
Regio oralis

- Labium superius
- Labium inferius



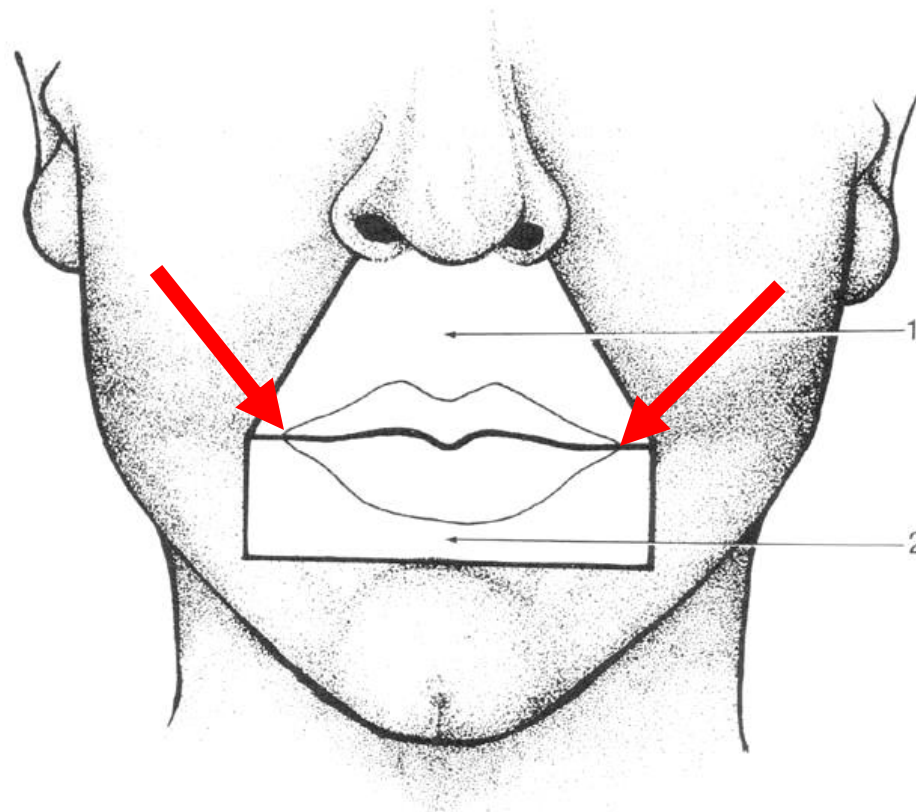
Regio oralis:

- *Rima oris*: mundspalten



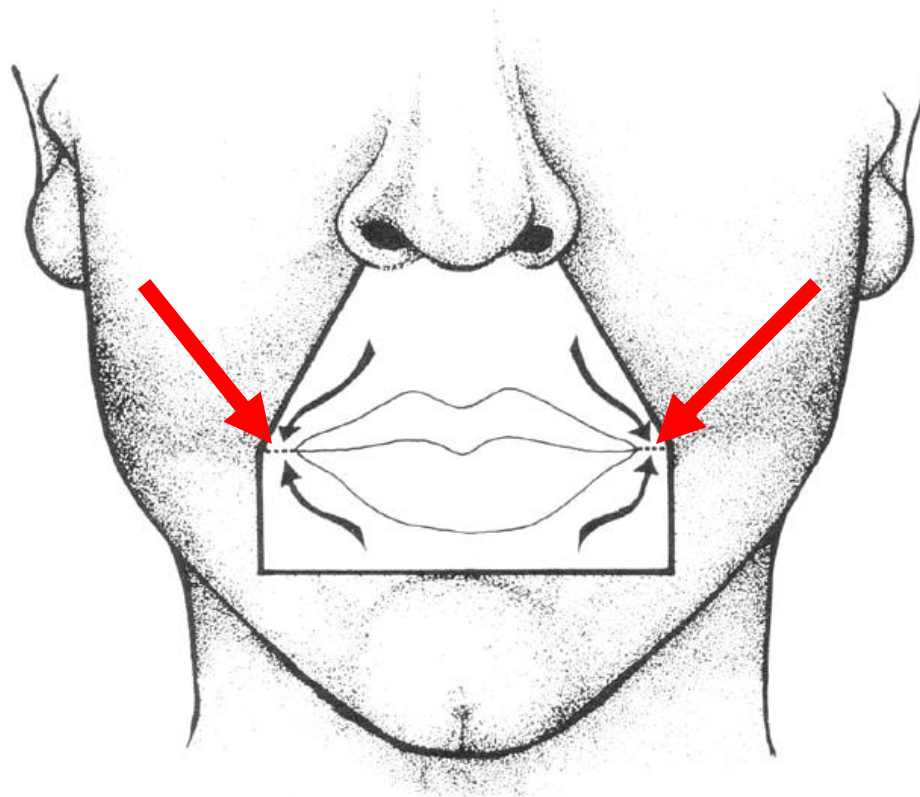
Regio oralis:

- *Angulus oris*: mundvigen eller mundvinklen



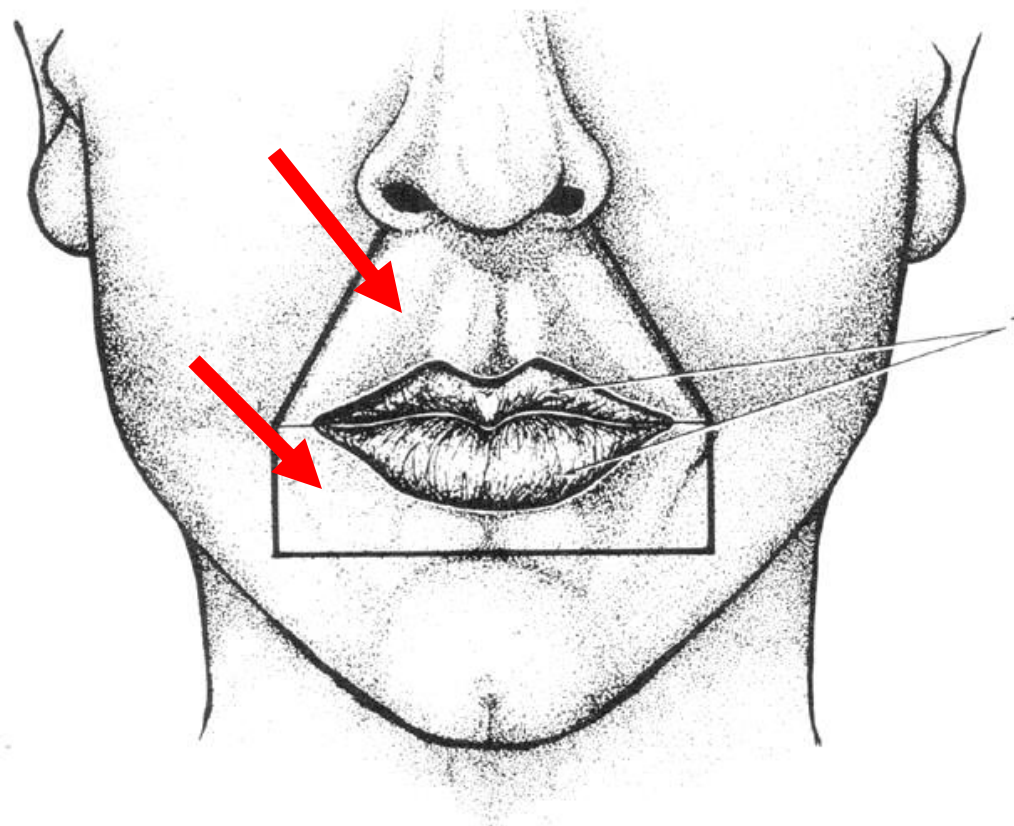
Regio oralis:

- *Commissura labiorum*: overgang mellem overlæbe og underlæbe



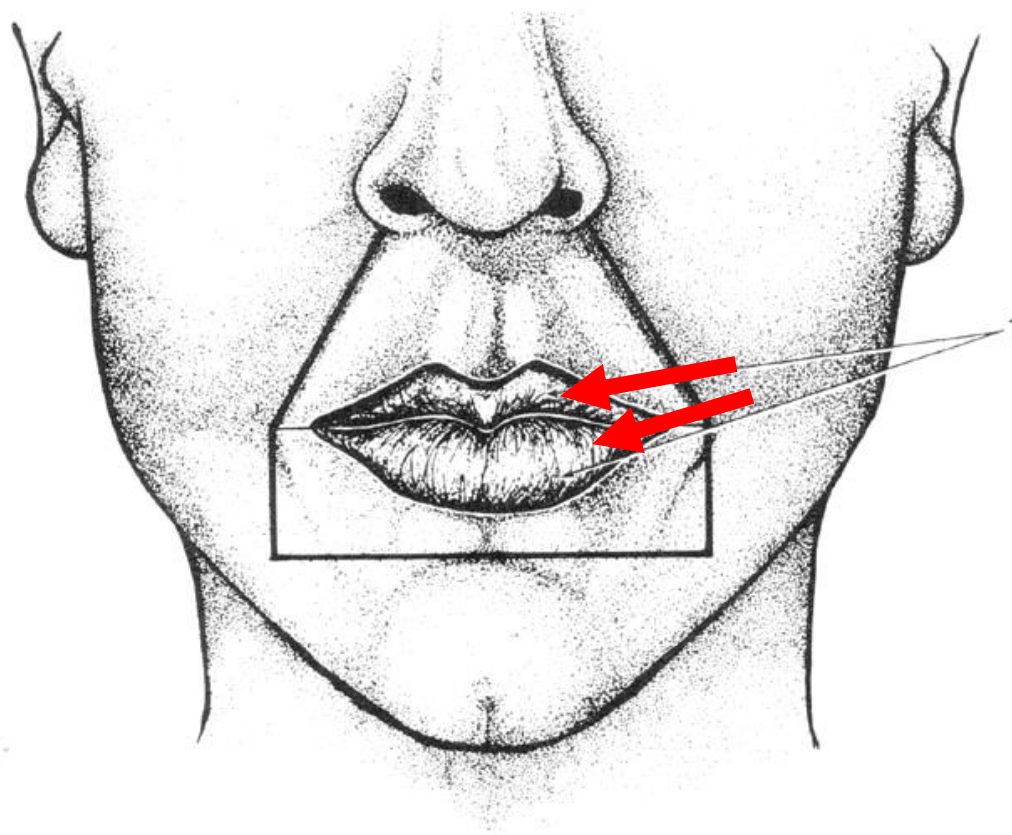
Regio oralis:

- *Pars cutanea:* læbernes huddel



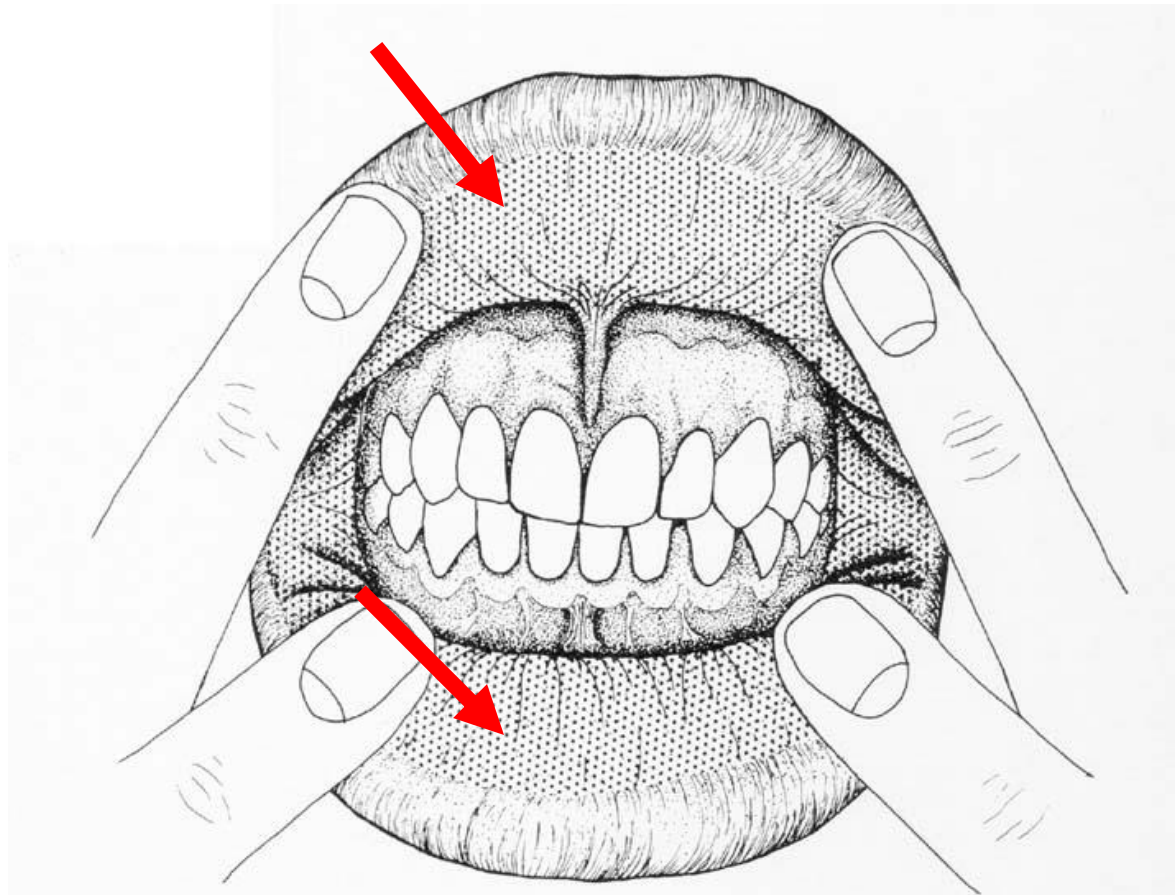
Regio oralis:

- *Prolabium*: "det læbe-røde"



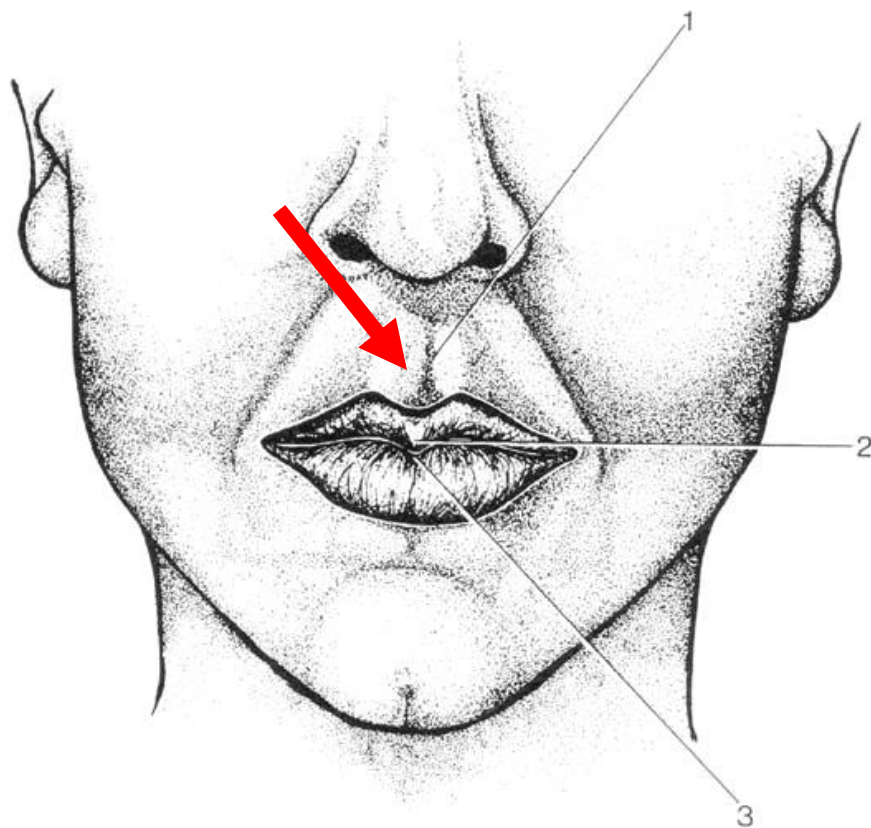
Regio oralis:

- *Pars mucosae:* læbernes slimhindedel



Regio oralis:

- *Philtrum*: fure fra næse til prolabium



Lagdeling af læbe

Cutis (-1)

fast bundet

Subcutis (1-2):

med muskler

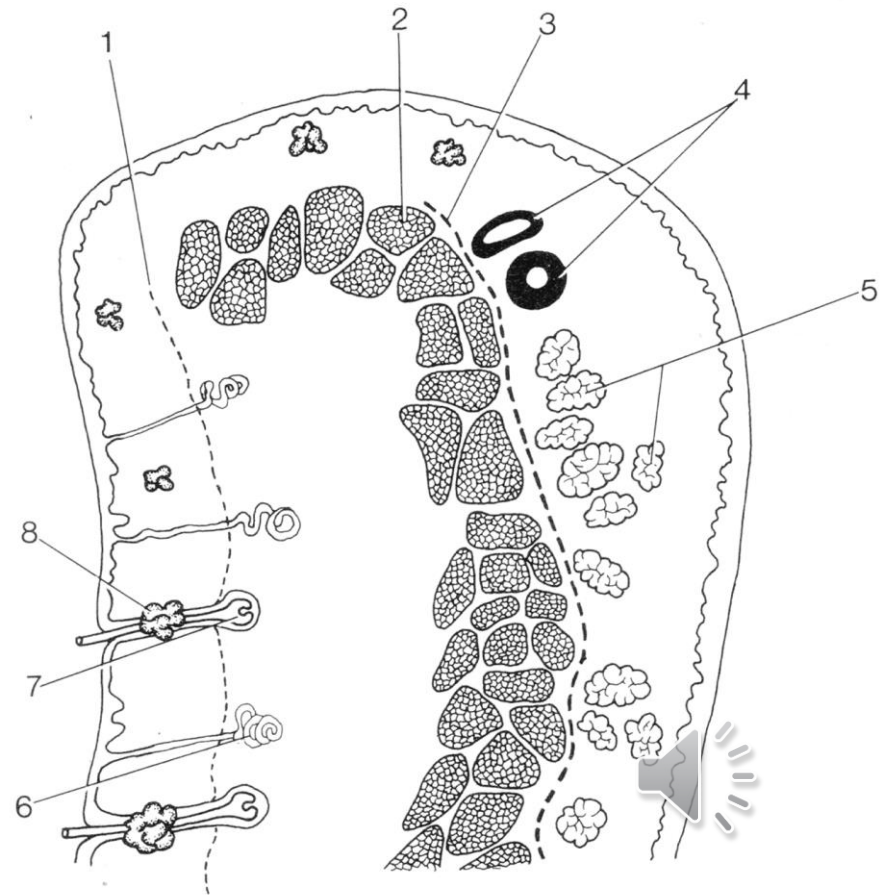
ringe fedtindhold

Tela submucosa (3-)

med kirtler

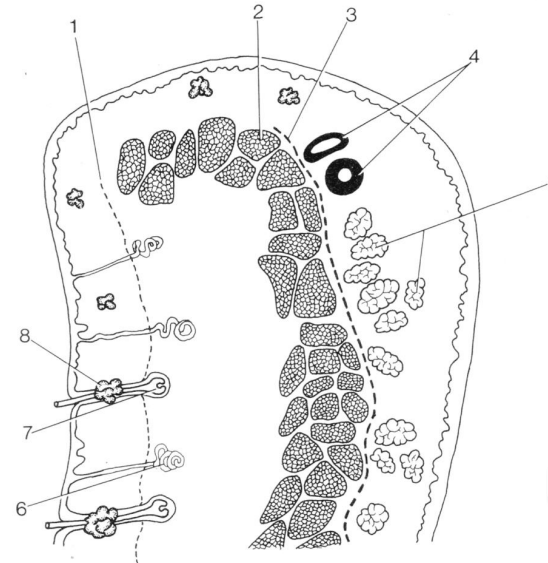
a. og v. labialis

Tunica mucosa



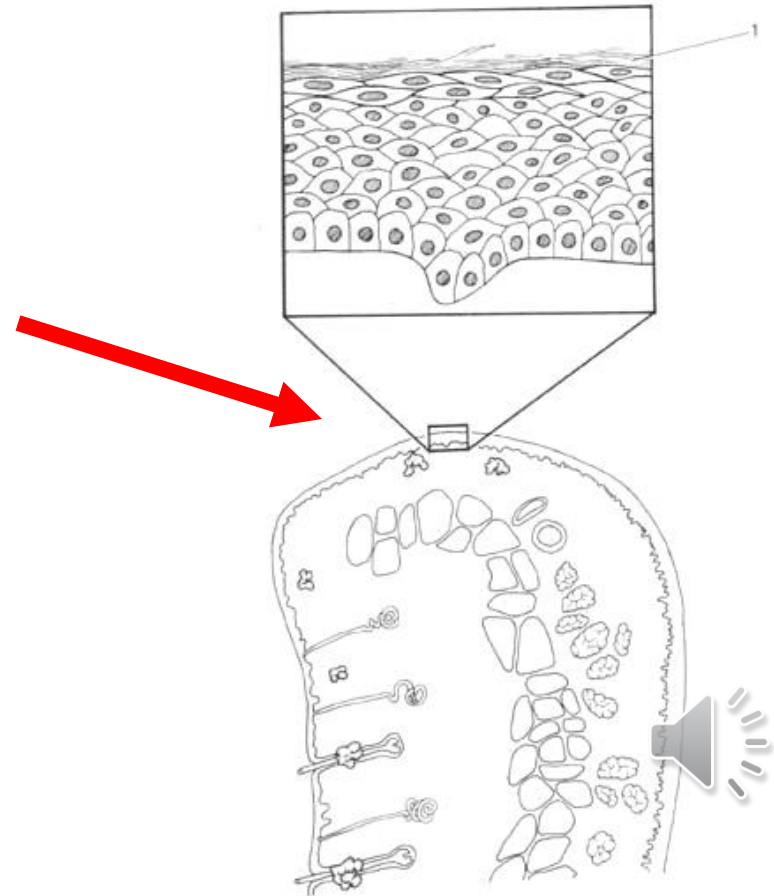
Lagdeling af læbe

- Hud er stramt bundet
- Hud og underhud indeholder
 - Talgkirtler i cutis (8)
 - Hårløg i subcutis
 - Svedkirtlers glomeruli i subcutis



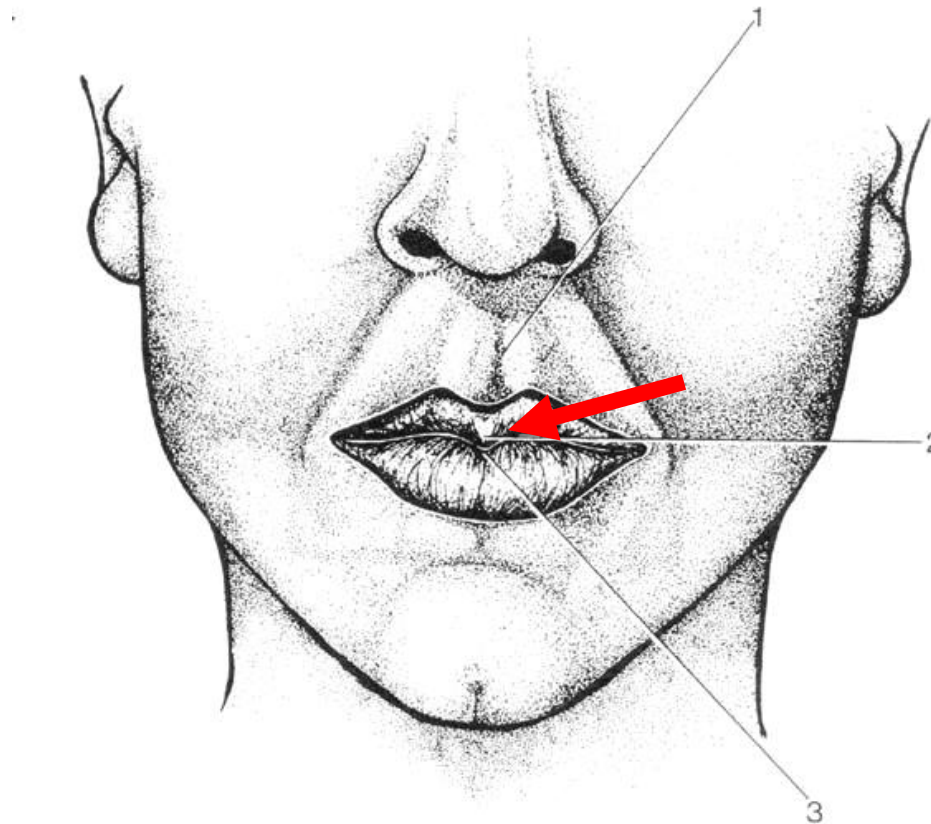
Epitel på prolabium

- tyndt
- kun lidt forhorning
- rødtligt

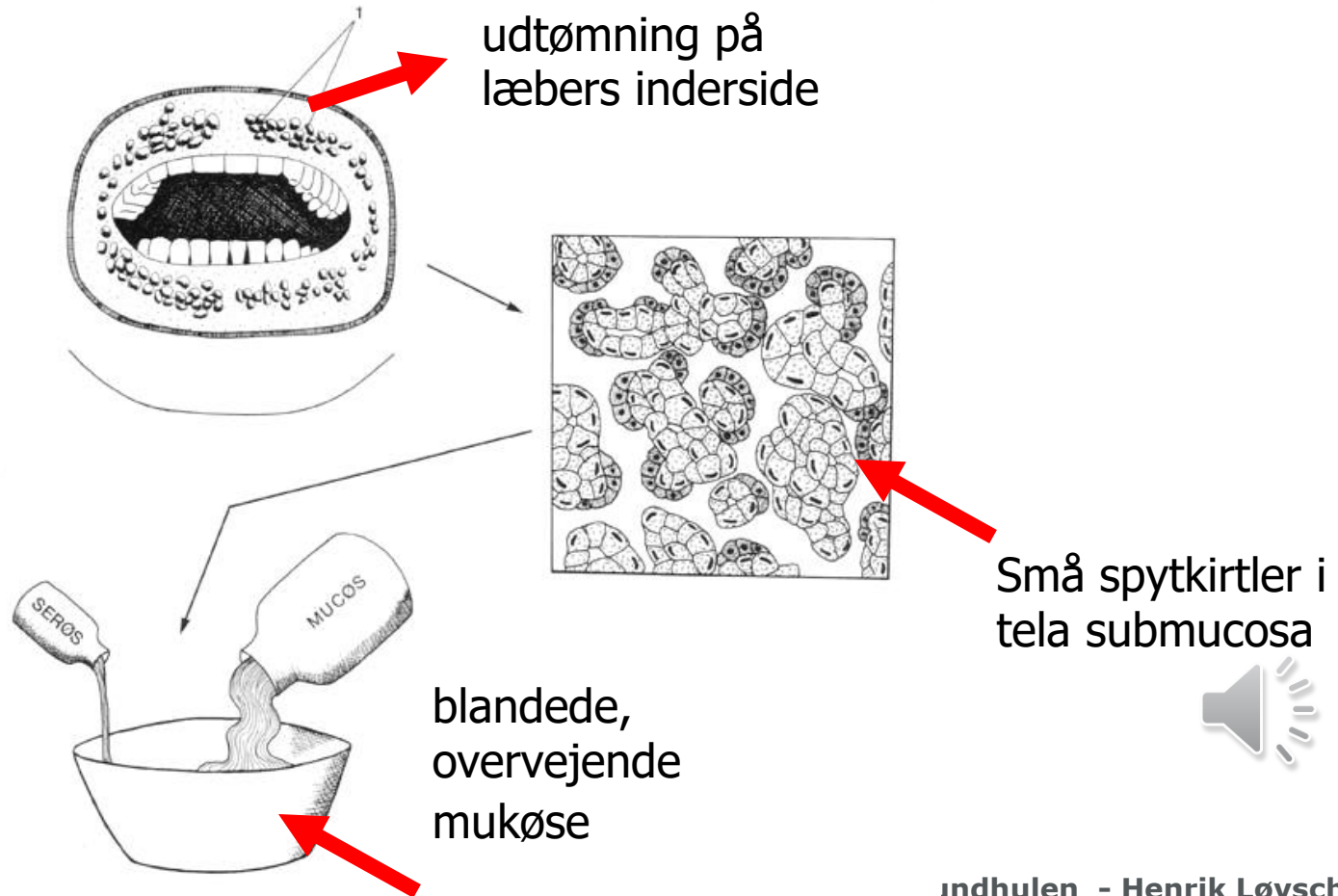


tuberculum labii superioris

- et lille knopformet fremspring

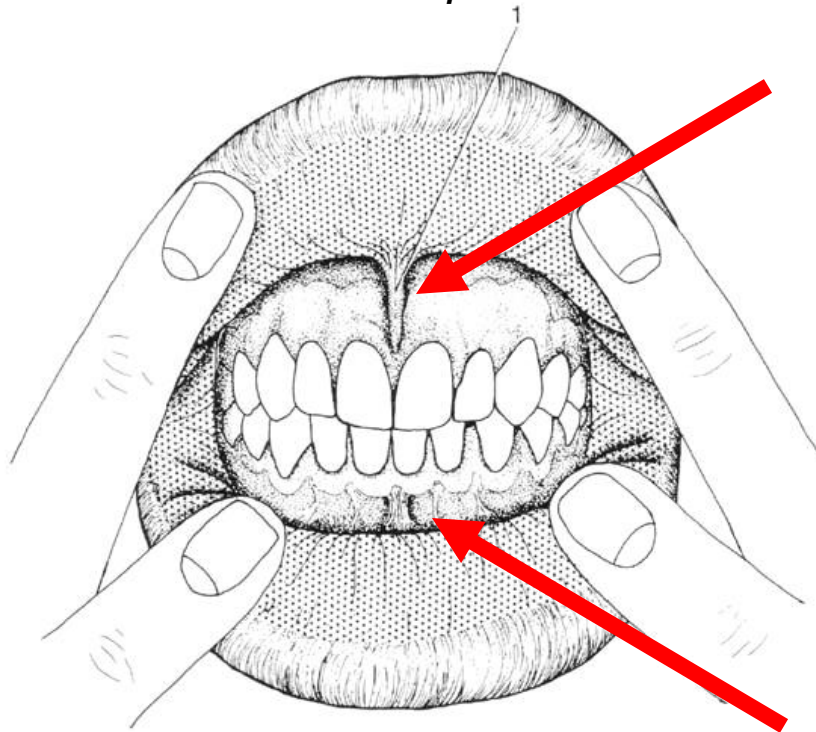


GII labialis



LÆBEBÅND

- Øvre læbeband - *Frenulum labii superioris*



- Nedre læbeband - *Frenulum labii inferioris*



overlæbens muskler

- **superficielle lag**
 - m. zygomaticus major
 - m. zygomaticus minor
 - m. levator labii superioris
 - m. levator labii superioris alaeque nasi
- **profunde lag**
 - m. levator anguli oris

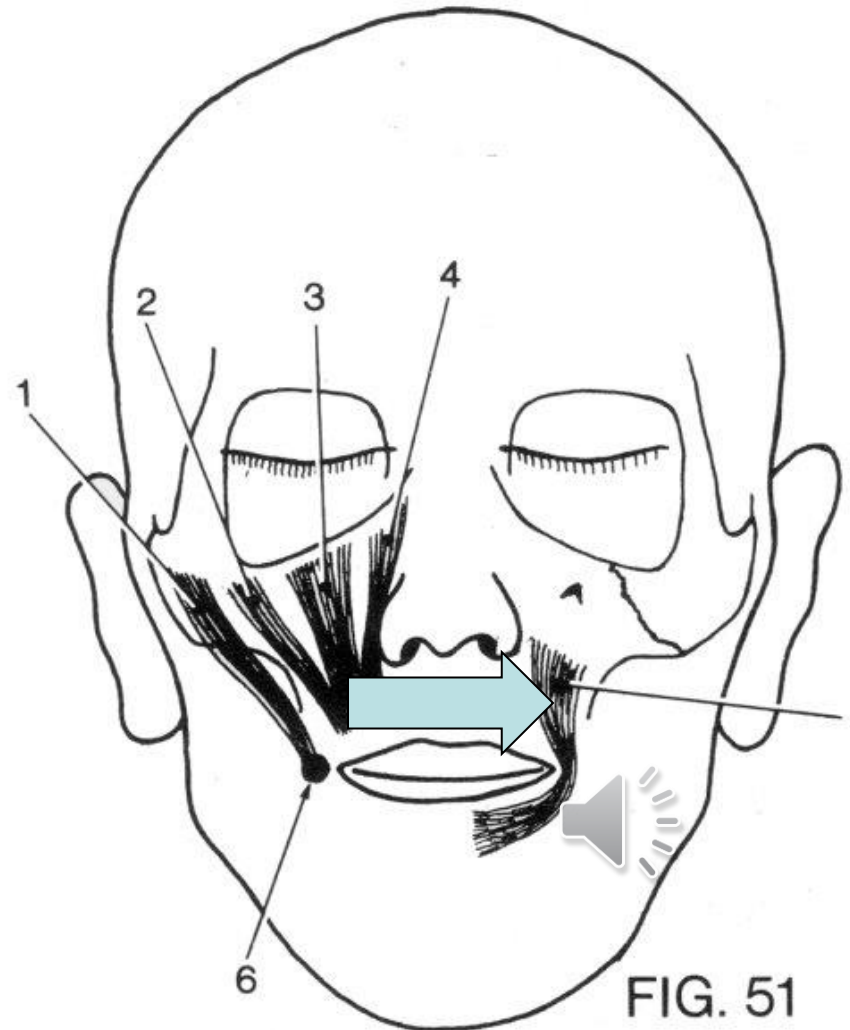


FIG. 51

tilhæftning

m. zygomaticus major

- tilhæfter modiolus

m. zygomaticus minor

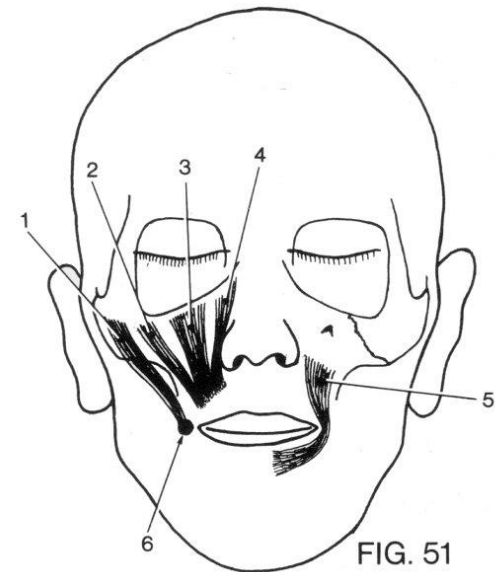
m. levator labii superioris

m. levator labii superioris alaeque nasi

- tilhæfter huden

m. levator anguli oris

- fortsætter i m. orbicularis oris



underlæbens muskler..

- Superficielle lag
 - m. depressor anguli oris
 - udspring på mandibula
 - fortsætter i m. orbicularis oris
- Profunde lag
 - m. depressor labii inferioris
 - udspring på mandibula
 - tilhæfter i underlæbens hud

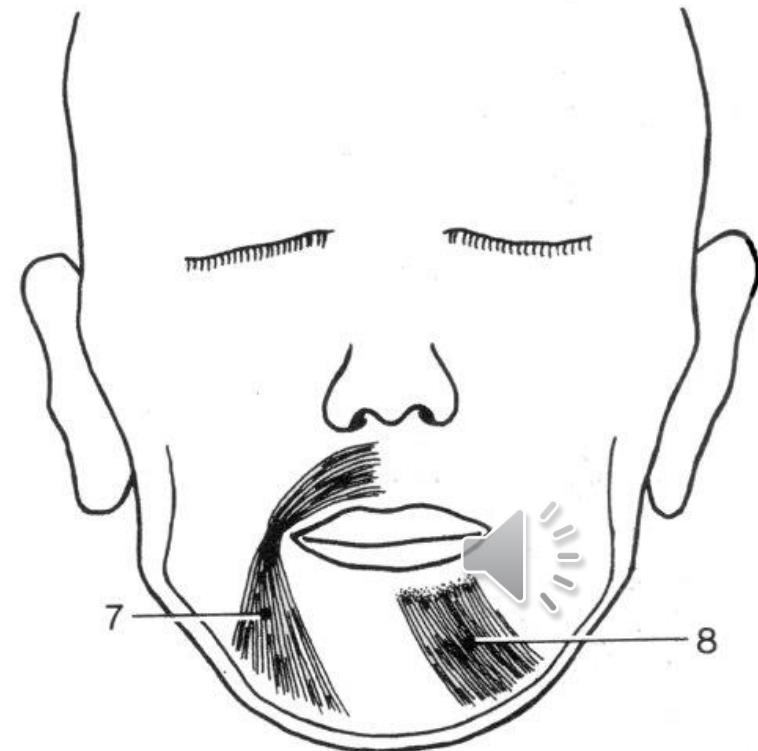


FIG 52

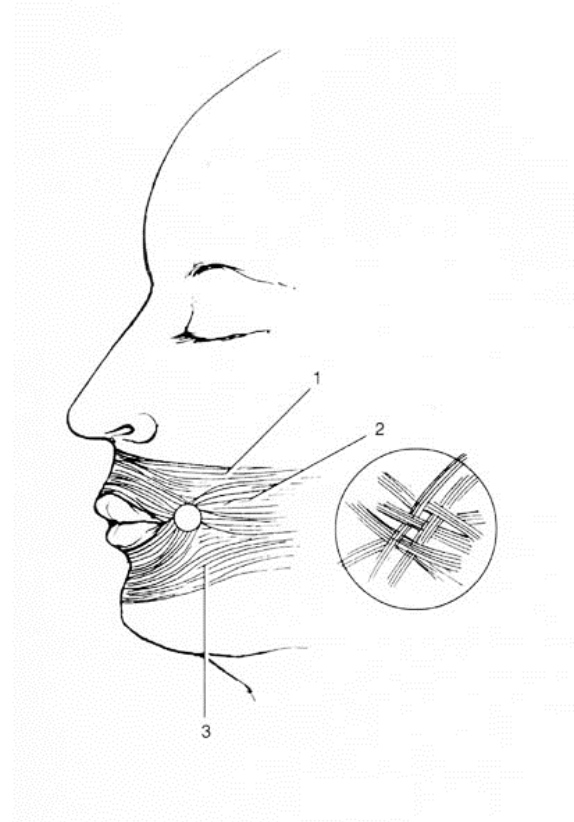
m. orbicularis oris

m. buccinator:

De midterste fibre i m. buccinator krydser hinanden i modiolus – **ingen** af fibrene i m. buccinator hæfter sig her.

Alle muskelfibrene fra m. buccinator fortsætter til over- og underlæbe, hvor de danner den **dybe** del af m. orbicularis oris:

1. øverste fibre i m. buccinator går til overlæben
2. midterste fibre i m. buccinator – krydser
3. nederste fibre i m. buccinator går til underlæbe



m. orbicularis oris

får fibre fra 3 muskler:

- m. buccinator
- m. levator anguli oris
- m. depressor anguli oris

Disse muskler hæfter ikke i huden

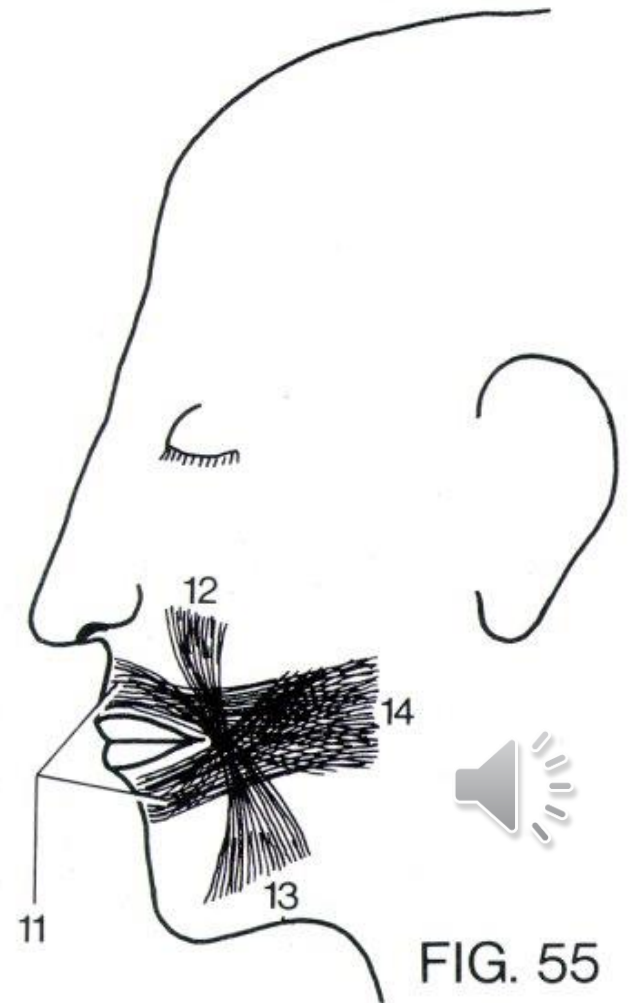
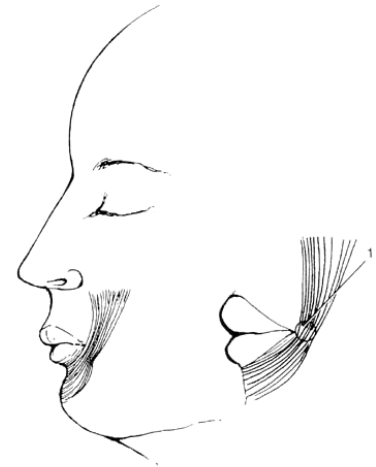


FIG. 55

m. orbicularis oris

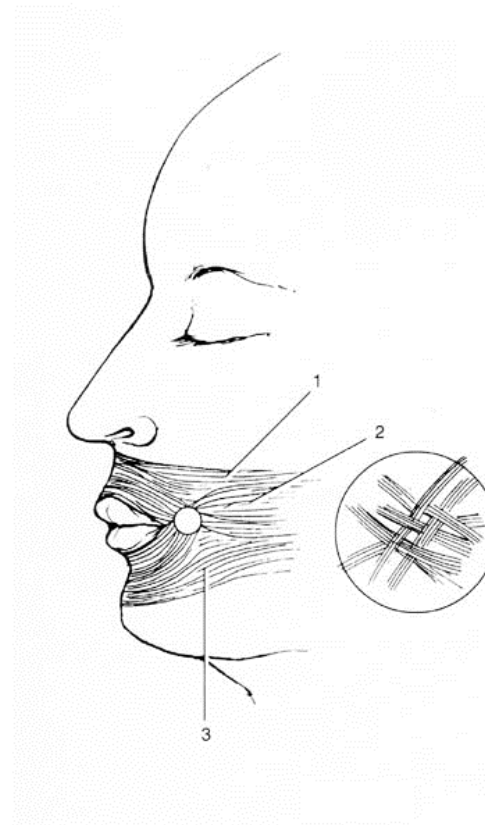
- m. buccinator
 - ingen fibre hæfter i modiolus
- m. levator anguli oris og m. depressor anguli oris
 - nogle få fibre hæfter sig i modiolus



m. orbicularis oris

- m. buccinator
 - ingen fibre hæfter i modiolus
- m. levator anguli oris og m. depressor anguli oris
 - nogle få fibre hæfter sig i modiolus

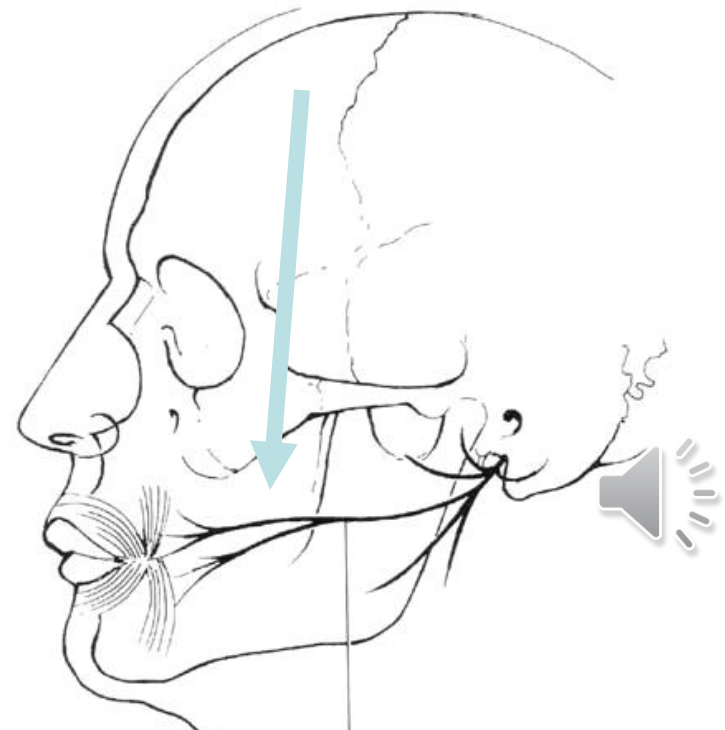
Modiolus kan palperes som en fortykkelse i commissura labiorum lateralt for anguli oris



Innervation:

Mundens muskler:

grene rami buccales fra n. facialis

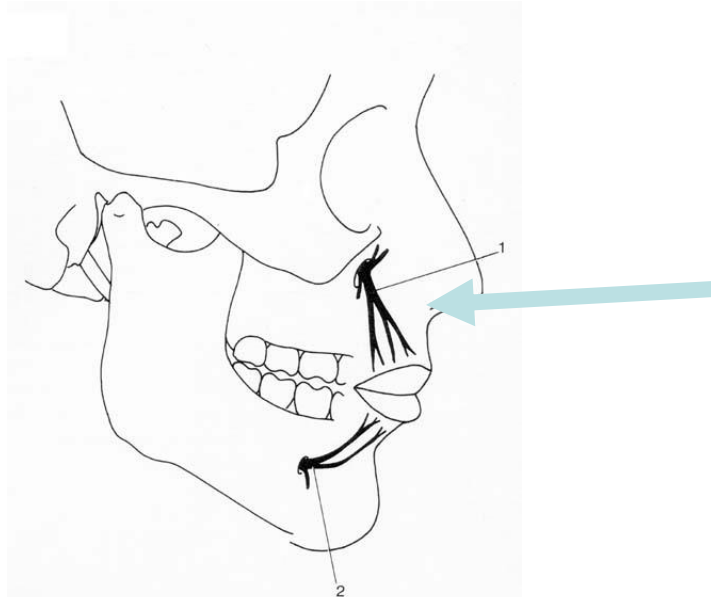


Innervation:

Overlæbens hud og slimhinde, samt gingiva facialet for fortænder, hjørnetænder og præmolarer har sensitive nervegrene:

rami labiales superiores

grene kommer fra *n. infraorbitalis* der kommer fra *n. maxillaris*



Innervation:

Underlæbens hud og slimhinde, samt gingiva facialet for fortænder, hjørnetænder og præmolarer har sensitive nervegrene:

n. mentalis

grene kommer fra n. alveolaris inferior fra n. mandibularis

